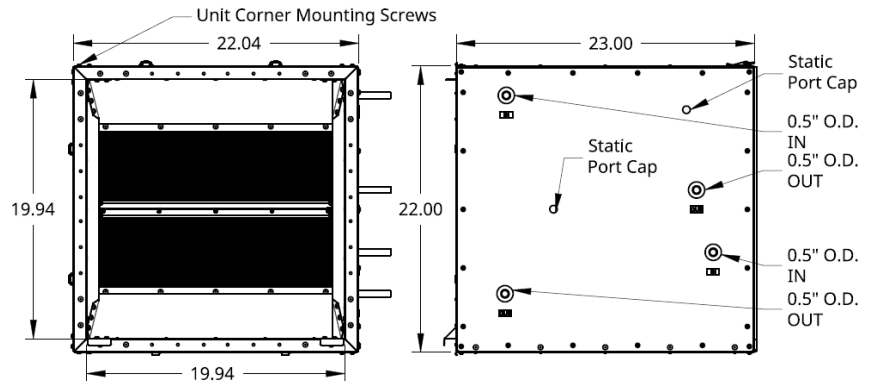
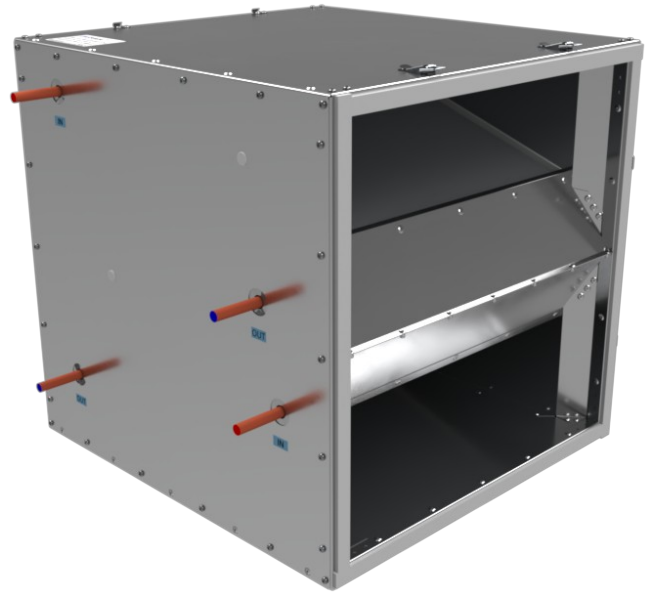


AH2 - 4Ton Hydronic Coil Module

Features:

- The AH2 A-Frame Hydronic Coil Module is part of a series of modules that can be combined to form a custom multi-functional Air-Handler.
- This Modular approach allows for an adaptive installation as each module can be rotated, minimizing installation cost by adapting to installation needs.
- The AH2-AF-HC is constructed out of Aluminum, (**63 lbs**) and includes mounting screws on every corner.
- The Coil Box is capable of 56000 BTUH* and is designed for glycol and/or water systems.
- The AH2-Hydronic Coil Module** provides four 0.5" O.D. connections with feed indicator labels.
- Includes 2 Front Panel Static Ports to measure the coil's differential pressure giving an indication of the airflow***.
- Replaceable coils with a screw-on Access Panel.
- Round and Square Custom Intake and Exhaust Duct adapters are available;

Call HVACQuick.com @ 888-855-7229 or team@hvacquick.com.



Press. Drop (inch W.C.) @550 CFM	Press. Drop (inch W.C.) @750 CFM	Press. Drop (inch W.C.) @1000 CFM	Press. Drop (inch W.C.) @1200 CFM	Press. Drop (inch W.C.) @1600 CFM
0.10	0.13	0.19	0.26	0.38

Units are in inches, The Pressure Drop over the Coil is approximate as every installation and environment varies.

* The actual BTUH can vary with the medium and or mix rate used. The 56000 BTUH given here is therefore an approximation.

** The Hydronic Coil Module does not have a drain pan and so is only capable of heating cycles.

***The provided Front Panel Static Ports can be connected to an analog or digital [manometer](#) to provide indication of the pressure drop over the Coil which gives an indication of the Actual Air Flow over the coil. ALWAYS heat the 1/8" tubing before installing or removing tubing. NOTE: remove the door and the caps sealing the front ports to use the 1/8" tube barbs underneath, reinstall the door with the tubing through the holes.