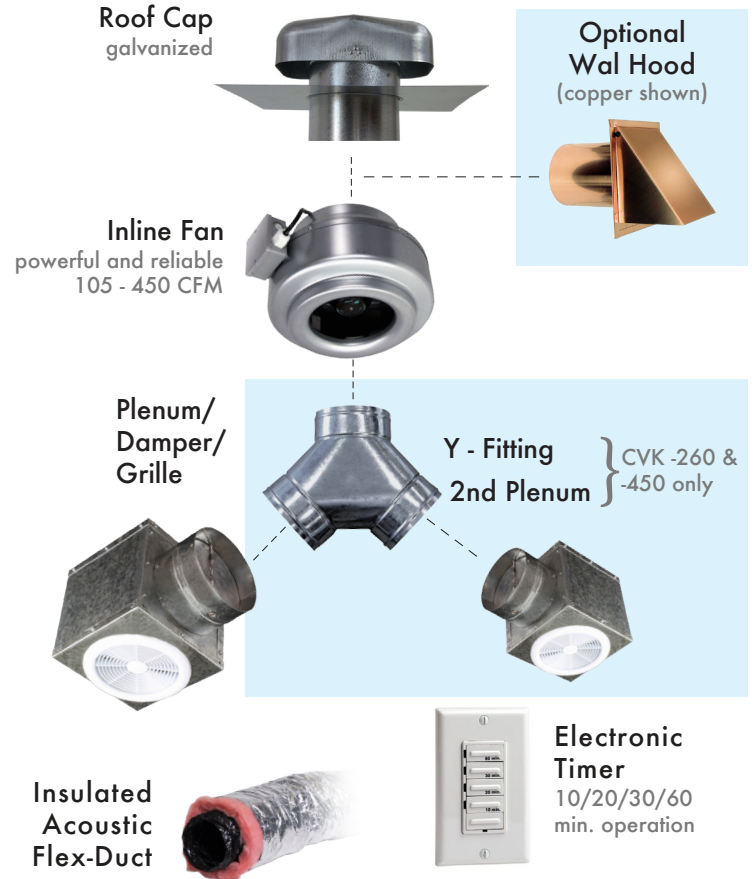




## AirScape® Inline Bathroom Ventilation Kits

- Much quieter and more powerful than ceiling units,
- One fan can serve 2 bathrooms depending on layout,
- Zero maintenance and long life,
- The perfect solution to keep elegant bathrooms fresh!



## Kit Contents:

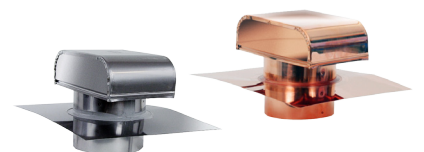
	Fan	Plenum & Damper	Grille	Acoustic Duct	Y-Fitting	Roof Cap	Timer	Tie Wraps
CVK-105	4" 105 CFM	1x w/6'-4' reducer	1x	4" x 25'	N/A	1x 4"	1x	4x
CVK-210	6" 210 CFM	1x	1x	6" x 25'	N/A	1x 6"	1x	4x
CVK-260	6" 260 CFM	2x	2x	6" x 25'	1x 6" x 6" x 6"	1x 6"	1x	7x
CVK-450	8" 450 CFM	2x	2x	8" x 25' 6" x 25'	1x 6" x 6" x 8"	1x 8"	1x	7x

6260W



A 2nd timer is recommended for dual bathroom applications.

Copper and Stainless upgrades available!



# Bathroom Ventilation Kits

AirScape's complete inline bathroom ventilation kits feature these high-quality components:

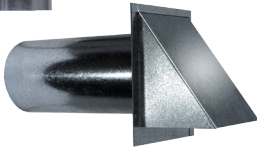


✓ **PLENUM BOX W/BACK-DRAFT DAMPER & GRILLE**

robust, galvanized construction provides barrier at ceiling level



✓ **GALVANIZED ROOF CAP OR WALL HOOD**  
#8 insect screen included



Copper & Stainless upgrades available!

✓ **INSULATED ACOUSTIC FLEX-DUCT**

The key to ultra-quiet operation  
Mildew resistant



✓ **ELECTRONIC TIMER**

10/20/30/60 min. operation;  
Use two timers for dual bath ventilation



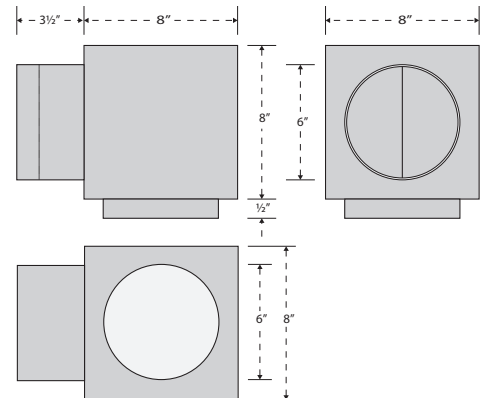
✓ **HIGH POWER INLINE CENTRIFUGAL FAN**

- robust construction
- backwards curved impeller
- large airflow volume (CFM)
  - fully speed controllable
  - includes 10ft power cord
- permanently lubricated, sealed bearings

## Fan Specs

	CFM	A	B	C
CVK-105	105	4"	11"	8"
CVK-210	210	6"	12 <sup>5</sup> / <sub>8</sub> "	7 <sup>5</sup> / <sub>8</sub> "
CVK-260	260	6"	12 <sup>5</sup> / <sub>8</sub> "	7 <sup>5</sup> / <sub>8</sub> "
CVK-450	450	8"	14 <sup>3</sup> / <sub>4</sub> "	8 <sup>1</sup> / <sub>4</sub> "

## Plenum Dimensions



Due to our continual product improvement efforts, performance ratings and specifications are subject to change without notice.

**Dual Intake Options**  
CVK-260 & -450 only

1 large bathroom

-or-

2 adjacent bathrooms

Speak with a ventilation expert:  
Call 866.448.4187

Need help with sizing?  
Use our online calculator:

[airscapefans.com/system-builder/bath-fan-sizer.php](http://airscapefans.com/system-builder/bath-fan-sizer.php)