

Make-Up Air Solutions

Passive Through-Wall
AIRLETS™



#HealthyLiving

aldes

Control Fresh Air

Make-up air is an essential element in a complete central exhaust indoor air quality ventilation system, particularly in structures that are well insulated and tightly built. The introduction of fresh air from the exterior provides the make-up air to replace air being exhausted by an exhaust fan. As a result, indoor relative humidity levels are kept at acceptable levels and a healthy atmosphere is assured.

The AIRLET™ is ideal for climates with outside temperatures above 0°F. Humidity and temperature-controlled AIRLETS™ are preferred in the lower end of this range. Usually one make-up air inlet is installed in each bedroom, plus one or more in the main living areas.

American Aldes offers a comprehensive line of AIRLET™ make-up air inlets. Through-Wall AIRLETS™ are available in round, rectangular, self-regulating, adjustable, filtering, sound-attenuating, and humidity- and temperature-compensating models.

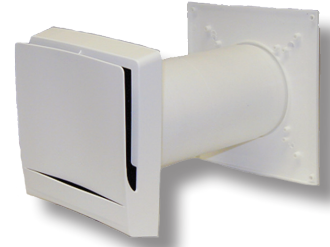
Features

- Controlled airflow
- Draft-free fresh air
- Filter equipment
- Sound attenuating
- Aesthetic design
- Adjustable sleeves
- Solutions for every design challenge
- Tested and proven technology
- Meets Washington State IAQ Code

Choosing a Model

AIRLET™ TL98

AIRLET™ TL98 Manually Adjustable Fresh Air Inlet incorporates a unique, variable, precision-control damper that provides superior comfort control. The damper is manually adjusted using a discreet slide control accessible from behind the front cover, which prevents unwanted tampering. The slightly arched grille face and horizontal lower slot take advantage of air currents to provide condensation protection. The superior air-distribution pattern ensures draft-free performance.



AIRLET™ 200

AIRLET™ 200 Round Self-Regulating Fresh Air Inlet offers unparalleled performance in the regulation of airflow. Its unique design assures draft-free fresh air. An interior grille, which may be oriented as necessary, is an added advantage. The round design permits easy installation after the interior and exterior surfaces have been applied.



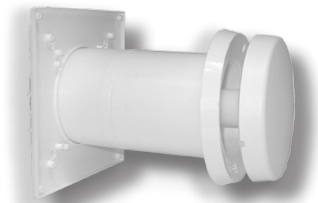
AIRLET™ 600

AIRLET™ 600 Humidity-Controlled Fresh Air Inlet is a unique make-up air inlet that automatically adjusts incoming airflow according to interior humidity levels. Ventilation make-up air is modulated according to the needs of the room. The AIRLET™ 600 mixes outdoor air with indoor air to minimize the perception of uncomfortable drafts, even in cold climates.



AIRLET™ 700

AIRLET™ 700 Temperature Controlled Fresh Air Inlet is a temperature-responsive air inlet that automatically adjusts the incoming airflow according to outside temperatures. The integral thermally powered actuator requires no external power to operate the airlet opening. The insulated front cover incorporates a condensation-prevention design.



AIRLET™ 4000

AIRLET™ 4000 Manually Adjustable Surface-Mount Inlet was developed to satisfy the ever-increasing demands for noise-reducing air inlet technology and good indoor air quality. The front section of the vent is shaped to provide low air velocity and good blending with ambient room air. The vent is available in two lengths: 18" (456mm) and 32" (806mm). The shorter vent is also available with a special storm shield that regulates air supply during heavy winds. A plastic external grille is available as an accessory.



www.aldes.us

To find out more about Through-Wall AIRLETS™ and other related products
visit www.aldes.us/make-up-air-solutions

Distributed By:



American ALDES Ventilation Corporation
4521 19th Street Court East, Suite 104 - Bradenton, FL 34203 USA
Tel: 941.351.3441 - Fax: 941.351.3442 - Toll-Free: 1.800.255.7749

© 2019 American ALDES Ventilation Corporation. Reproduction or distribution, in whole or in part, of this document, in any form or by any means, without the express written consent of American ALDES Ventilation Corporation, is strictly prohibited. The information contained within this document is subject to change without prior written notice

