

LIME installation overview:
Lineset enters the evaporator from either side, turns 90° up into the ceiling and is completely concealed by lineset cover (included in kit).

MINILIME
BTU/Hr: Up to 30,000 Max Head: 26 ft



MAXILIME
BTU/Hr: Up to 60,000 Max Head: 49 ft

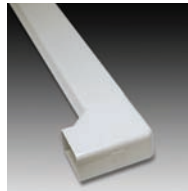


Typical finished installation



ASP-ML 115, 230, LG24

ML series kits consists of a standard MINILIME pump assembly which is packaged complete with ASPEN SLIMLINE lineset cover system. SLIMLINE includes an elbow, matching 31" length of lineset cover and ceiling plate. The SLIMLINE profile is less than 2" high and specifically developed by ASPEN to present the least intrusive profile for the lineset cover.



SLIMLINE can accommodate lineset up to 3/8" x 5/8" with 3/8" insulation. Standard ML kits come with a light IVORY SLIMLINE color which matches many evaporators.

NOTE: SLIMLINE is not compatible with lineset covers from any other manufacturer. The SLIMLINE provided is sufficient to conceal the lineset for most minisplit installations. Extra lengths of duct or additional fittings are NOT available.

A white conversion kit (ASP-ML-WPAC) is available. This kit consists of the same elbow, matching 31" length of lineset cover and ceiling plate as the SLIMLINE IVORY, but in bright white which will make the pump/duct assembly compatible with any white evaporator.

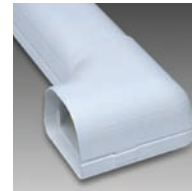
ASP-MLS 115, 230, LG24 ASP-MAXLS 115, 230

MLS & MAXLS series kits consists of a standard MINILIME OR MAXILIME pump assembly which is packaged complete with SLIMDUCT lineset cover system. SLIMDUCT includes an elbow, matching 31" length of lineset cover and ceiling plate. The SLIMDUCT profile is considerably deeper than the ML/SLIMLINE and can accommodate a lineset of up to 1/2" x 3/4" with 3/8" insulation. Standard MLS kits come with a BEIGE/IVORY SLIMDUCT color only and are fully compatible in size and color with the SD-77 Series from SLIMDUCT and with the CD-75 Series from LINEHIDE. Extra lengths of lineset cover up to 78" and various other fittings are available from Airtec if required.



ASP-MLF 115, 230 ASP-MAXLF 115, 230

MLF & MAXLF series kits consists of a standard MINILIME OR MAXILIME pump assembly which is packaged complete with a FORTRESS lineset cover system. FORTRESS includes an elbow, matching 31" length of lineset cover and ceiling plate. FORTRESS profile is considerably deeper than the MLS/SLIMDUCT and was developed for 36,000 to 60,000 BTU/Hr. Minisplit installations. FORTRESS can accommodate the larger lineset and thicker insulation now required by some local codes. Standard MLF kits come with WHITE FORTRESS only and are fully compatible with the FORTRESS LD-92 Series from AIRTEC. Extra lengths of lineset cover up to 96" and various other fittings are available from AIRTEC if required.



ASP-MLOEM 115, 230, LG24 ASP-MAXOEM 115, 230

MLOEM & MAXOEM series consists of a MINILIME or MAXILIME pump assembly only, which is supplied complete with 6' of 5/8" intake hose and 5' of 1/4" discharge hose but does not include the lineset cover system.

Included are a plastic mounting bracket, an inline filter and a 90° ell with a 5/8" barb fitting on one end and a 3/4" MPT at the other end for connecting directly into the drain pan outlet. They are intended for use in OEM applications or in situations where there are space restrictions or where lineset covers are not required.