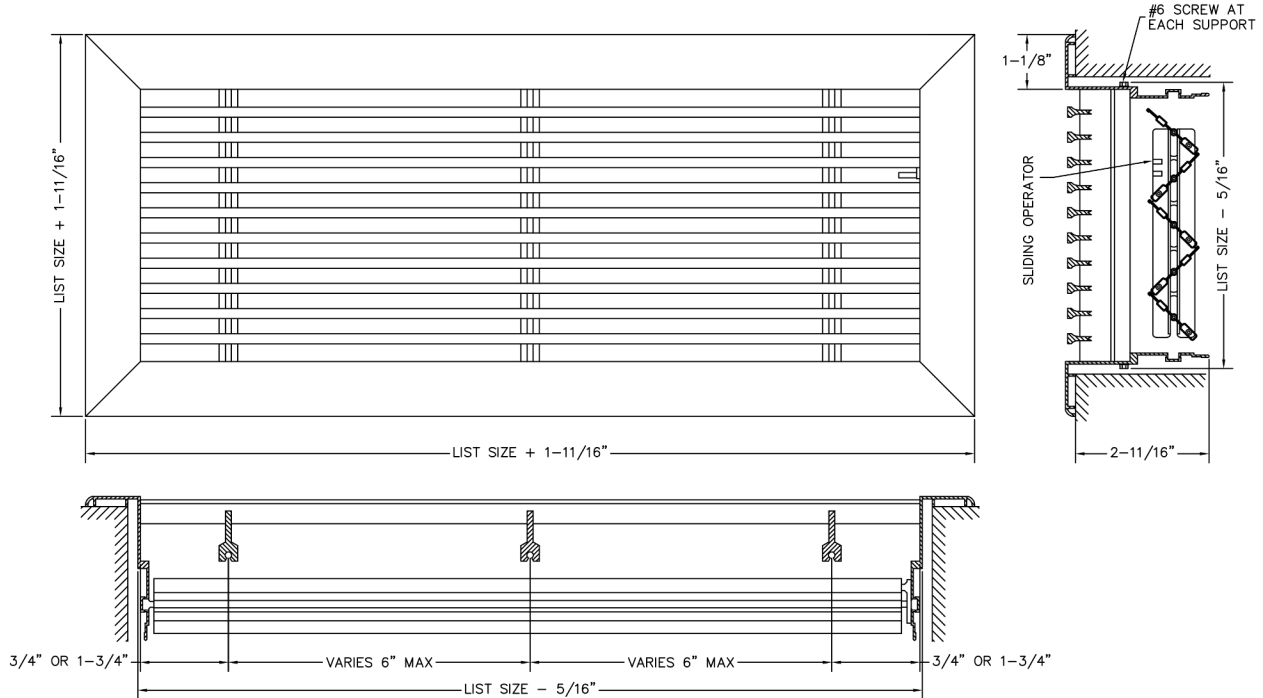


- Fully extruded, high quality aluminum construction for a stylish appearance.
- Reinforced core designed for floor applications.
- Opposed blade damper with slide operator.
- Fixed blades parallel to the long dimension.
- Sections over 84" are joined for continuous lengths with aligning pins provided.
- Available on 1/2" increments as standard, and custom sizes up to 1/16" increments.
- Available with durable powder coat finish.



**1. Select a Blade Option**

- 00 - 0° Deflection
- 01 - 0° Pencil Proof
- 15 - 15° Deflection
- 30 - 30° Deflection
- 82 - 0° Air Flow
- 84 - 0° Heel Proof

**2. Select a Mounting Option**

- A - Screw Holes
- B - Spring Clips
- C - Concealed Brackets
- D - Sidewall Screw Holes
- TB - No Mounting

**3. Specify the Length x Height Dimensions**

Inches      MM \_\_\_\_\_ x \_\_\_\_\_

**4. Select a Finish**

- W White      FB - Flat Black
- S Silver      Special: \_\_\_\_\_
- B Brown
- M Mill

**5. Select a Lead Time**

- 3 Day Ship
- Next Friday
- Standard Delivery



**Additional Options**

See specific submittal pages for options listed below.

- R - Removable Core
- N - No Flange

**Project / Location:** \_\_\_\_\_

**Architect:** \_\_\_\_\_

**Engineer:** \_\_\_\_\_

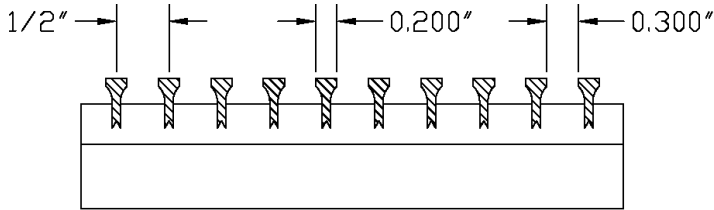
**Contractor:** \_\_\_\_\_



## BLADE OPTIONS

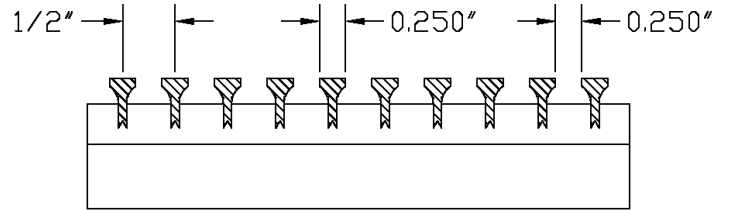
**-00**

0° 13/64" blades on 1/2" centers



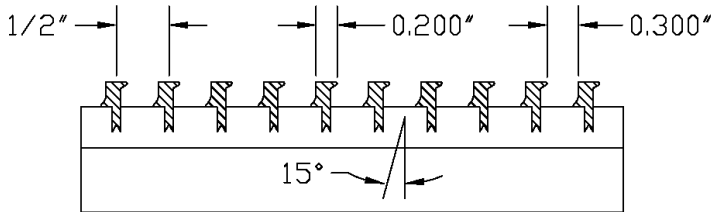
**-01**

0° 1/4" blades on 1/2" centers



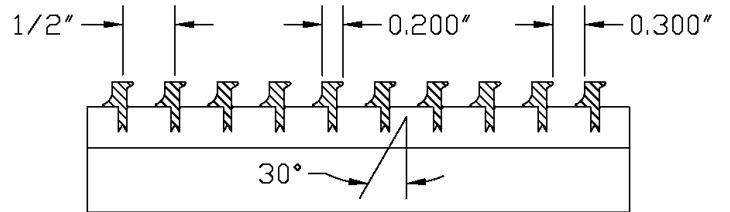
**-15**

15° 13/64" blades on 1/2" centers



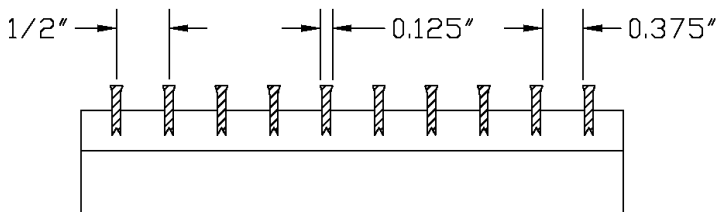
**-30**

30° 13/64" blades on 1/2" centers



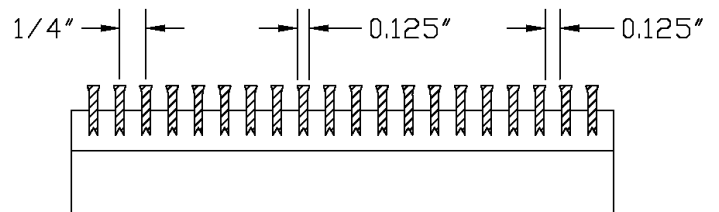
**-82**

0° 1/8" blades on 1/2" centers



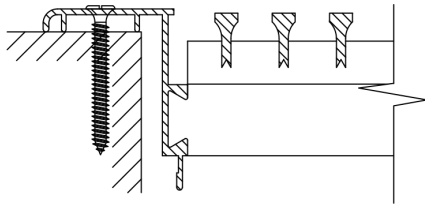
**-84**

0° 1/8" blades on 1/4" centers



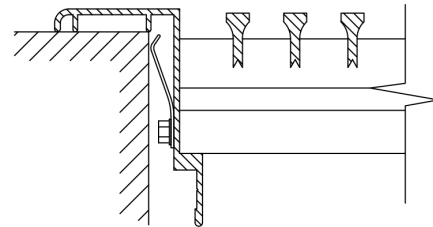
## MOUNTING

**-A**  
Screw Holes



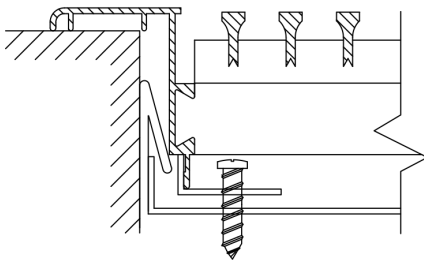
Color matched screws with countersunk screw holes.

**-B**  
Spring Clips



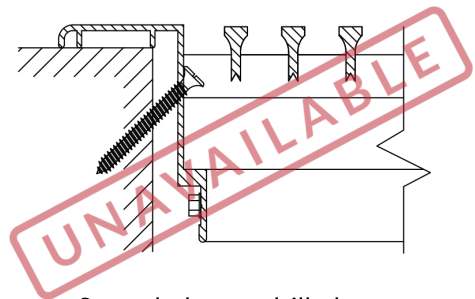
Hidden clips behind the flange to keep the grille secure in the opening.  
Only suitable for floor & sill applications.

**-C**  
Concealed Brackets



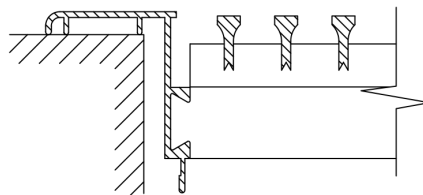
Product is fastened to duct-mounted brackets, which are concealed behind the blades.

**-D**  
Sidewall Screw Holes



Screw holes are drilled at a 45° angle on inner flange.  
Only available with Removable Core.  
(Removable option not available for floor)  
Suitable for ceiling, wall or sill installation.

**-TB**  
No Mounting



Designed for lay-in ceiling and custom applications.  
For lay-in, order 2" under to account for flange.

e.g. 22" x 10" will have O.D. 23-11/16" x 11-11/16"  
and fit a standard 24" x 12" T-bar opening.