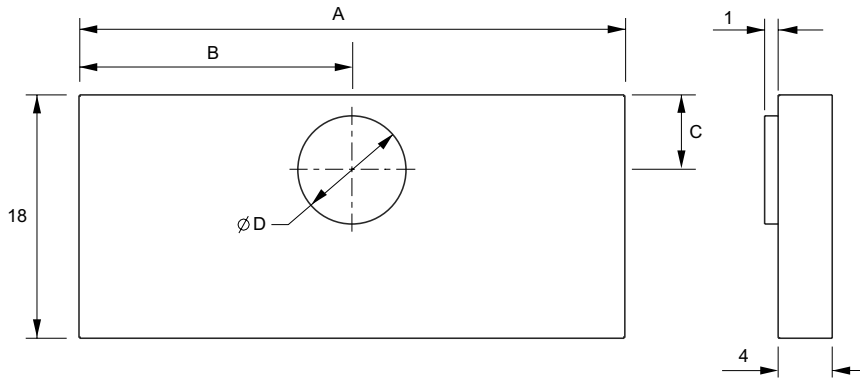


# HL Series

## Kitchen Hood Liners

### STANDARD FEATURES

- Attractive stainless steel fascia
- 50W dimmable halogen lights
- Compatible with
- Compatible with an inline/roof exhaust fan
- Stainless steel baffle filters



	A	B	C	D	E	F	G	Weight
HL 30	28 3/8	14 3/16	5 1/2	8	18	1	4	78
HL 36	34 3/8	17 3/16	5 1/2	8	18	1	4	92
HL 42	40 3/8	20 3/16	6 1/2	10	18	1	4	121
HL 48	46 3/8	23 3/16	6 1/2	10	18	1	4	146

All dimensions in inches. Weights in pounds.

Hood Liner Specifications				Exhaust Fan Specifications							
Line	Qty	Model No.	Tag	CFM	SP	Fan RPM	Watts	Volts	Phase	Hertz	Encl
1											
2											
3											
4											

Accessory Items	1	2	3	4	Accessory Items	1	2	3	4

Project: \_\_\_\_\_ Submitted: \_\_\_\_\_  
 Customer: \_\_\_\_\_ Approved: \_\_\_\_\_  
 Location: \_\_\_\_\_