

Master Flow® Ductwork Product Catalog RESMF164

Updated: 12/14



*Quality You Can Trust... From
North America's Largest Roofing Manufacturer!™*

www.gaf.com



DUCTWORK

Metal, Flexible & Accessories

Airflow
Done Right!

NEW DUCTWORK
INSTALLATIONS

VENTILATION

HEATING
& AIR CONDITIONING





Designed by GAF's HVAC Ductwork Specialists

Plenums & Air Returns	2
Starting Collars & Take-Offs	3
Trunk & Branch Lines	4 - 5
Transitions & Connectors	5 - 7
In-Wall Duct Systems	7 - 9
Register Boxes	10 - 12
Rooftop Venting	12 - 14
Heavy Gauge (26) Systems	14 - 15
Stove Pipes	15 - 16
Miscellaneous Items	16 - 19
Kits	19

Whether you're installing all-new or replacing old ductwork, adding a room, venting a bathroom or range hood, or increasing the efficiency of the HVAC system, it's easy to find everything you need to complete all of your ductwork projects.

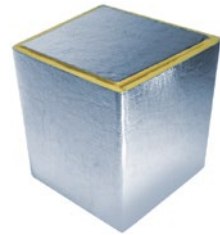


Plenums & Air Returns

This section includes products that attach directly to the furnace or are used for return air.

Duct Board Plenum

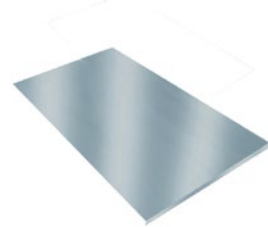
- For constructing air-supply plenums.
- Precut for easy assembly.
- Secure with approved foil tape.
- Kit includes 4 sides and a top.



Model #	Size	R-Value	Thickness	Carton Qty.	Weight	UPC Item Code (050206)
4DPK24X24X24	24" x 24" x 24"	6	1.5"	3	33 lb	963241

Galvanized Panning

- To create a run of rectangular duct between studs.
- 30-gauge galvanized steel.



Model #	Size	Carton Qty.	Weight	UPC Item Code (050206)
GP16X35	16" x 35"	6	13.7 lb	937402

Return Air Filter Box

- For use with self-contained air-conditioning units.
- Transition from floor grille to insulated flexible duct return line.
- Filter not included.



Model #	Size	Diameter	Carton Qty.	Weight	UPC Item Code (050206)
RA12X20X12	12" x 20"	12"	3	10.5 lb	942406

Return Air Box

- Provides collecting port for central return duct.



Model #	Size	Carton Qty.	Weight	UPC Item Code (050206)
RAB24X14	24" x 14"	4	18 lb	948101

Starting Collars & Take-Offs

This section includes round and rectangular starting collars and take-offs.

Starting Collar Take-Offs – Snap Together

- For transition from lined or unlined plenum to round pipe or insulated flexible duct.
- Snap together.



Model #	Diameter	Carton Qty.	Weight	UPC Item Code (050206)
SCF4	4"	12	4 lb	931400
SCF5	5"	12	4.9 lb	931509
SCF6	6"	18	7.5 lb	931608
SCF7	7"	12	6.3 lb	931707
SCF8	8"	12	7.5 lb	931806
SCF10	10"	6	5 lb	931905
SCF12	12"	6	6 lb	932001
SCF14	14"	6	7 lb	932100

Starting Collar Take-Offs

- For transition from ductboard plenums, internally lined plenums, or insulated register boxes to round pipe or insulated flexible duct. Can also be used with unlined plenums.
- Extra-long tabs to fit all ductboard thicknesses through 1 1/2" (R6.0 value).



Model #	Diameter	Carton Qty.	Weight	UPC Item Code (050206)
DSCF4	4"	6	2 lb	931448
DSCF5	5"	6	3 lb	931547
DSCF6	6"	20	13.4 lb	931646
DSCF7	7"	8	6.6 lb	931745
DSCF8	8"	14	11.6 lb	931844
DSCF10	10"	6	7.8 lb	931943
DSCF12	12"	6	9.3 lb	932049
DSCF14	14"	6	10 lb	932247

Starting Collars

- For transition from ductboard plenums, internally lined plenums, or insulated register boxes to round pipe or insulated flexible duct. Can also be used with unlined plenums.
- Extra-long tabs to fit all ductboard thicknesses through 1 1/2" (R6.0 value).



Model #	Diameter	Carton Qty.	Weight	UPC Item Code (050206)
LSC4	4"	8	3 lb	031636
LSC5	5"	10	4 lb	031643
LSC6	6"	16	8 lb	031650
LSC8	8"	8	6 lb	031667

Air-Tite Take-Offs

- Provides transition from flat surface to insulated flexible duct or round pipe.
- Tacky gasket provides excellent seal.



Model #	Diameter	Carton Qty.	Weight	UPC Item Code (050206)
ATTO6	6"	10	7.5 lb	932407
ATTO8	8"	7	8 lb	932421
ATTO10	10"	6	8 lb	932445
ATTO12	12"	6	9.5 lb	932469

Saddle Air-Tite Take-Off

- Provides transition from round surface to insulated flexible duct or round pipe.
- Tacky gasket provides excellent seal.



Model #	Diameter	Carton Qty.	Weight	UPC Item Code (050206)
SATTO6	6"	10	7.5 lb	932629

Top Take-Offs

- For transition from air plenums or rectangular duct to round pipe or insulated flexible duct.
- RSC is a "Scotty" take-off.



Model #	Diameter	Carton Qty.	Weight	UPC Item Code (050206)
TTO6	6"	10	11.6 lb	931141
RSC7X6	6"	6	7 lb	931660

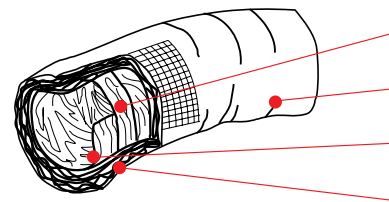
Trunk & Branch Lines

This section includes insulated flexible ducts, round pipes, and rectangular ducts.

Flexible Insulated Ducts

Approval Codes

- Meets UL-181 Class 1 Air Duct
- NFPA 90A + 90B
- International Building Code
- California Bureau Of Home Furnishing & Thermal Insulation



Core: 2-ply continuous inner core products. Smooth interior for more efficient air movement.

Vapor Barrier: Durable, scuff-resistant jacket.

Helix: Zinc-coated, high-carbon steel wire helix.

Insulation: Thick, continuous blanket of glass fiber insulation.

PERFORMANCE DATA

R-Value: As measured per the ADC test method and ASTM C518

Maximum Flame Spread: 25

Maximum Smoke Developed: 50

Temperature Range: -20°F to 180°F constant. 250°F intermittent.

1/2" Oversized Core: Two plies of polyester film that encapsulate galvanized steel wire helix.

Velocity: 4,000 FPM maximum

Model # Series	Vapor Barrier	R-Value	Glass Fiber Insulation	Indoor Use	Outdoor Use
F6IFD	Metalized single-strand fiberglass yarns for added strength and tear-resistance	6.0	2" thick	X	—
F8IFD	Metalized single-strand fiberglass yarns for added strength and tear-resistance	8.0	3" thick	X	—
MIF	Extra-heavy black polyethylene jacket with UV inhibitors	4.2	1 1/4" thick	X	X

Insulated Flexible Ducts – R6 Silver Jacket

- Metalized jacket.
- R-6.0 Value.



Model #	Size	Diameter	Length	R-Value	Weight	UPC Item Code (050206)
F6IFD4X144	4" x 12'	4"	12 ft.	6	5 lb	031445
F6IFD4X300	4" x 25'	4"	25 ft.	6	10 lb	922064
F6IFD5X300	5" x 25'	5"	25 ft.	6	8 lb	922149
F6IFD6X300	6" x 25'	6"	25 ft.	6	11.5 lb	922248
F6IFD7X300	7" x 25'	7"	25 ft.	6	12.5 lb	922347
F6IFD8X300	8" x 25'	8"	25 ft.	6	13 lb	922446
F6IFD10X300	10" x 25'	10"	25 ft.	6	16 lb	922545
F6IFD12X300	12" x 25'	12"	25 ft.	6	19 lb	922644
F6IFD14X300	14" x 25'	14"	25 ft.	6	26 lb	922743

Insulated Flexible Ducts – R8 Silver Jacket

- Metalized jacket.
- R-8.0 Value.



Model #	Size	Diameter	Length	R-Value	Weight	UPC Item Code (050206)
F8IFD4X300	4" x 25'	4"	25 ft.	8	12.0 lb	029206
F8IFD5X300	5" x 25'	5"	25 ft.	8	11.5 lb	029213
F8IFD6X300	6" x 25'	6"	25 ft.	8	13.8 lb	029220
F8IFD7X300	7" x 25'	7"	25 ft.	8	16 lb	029237
F8IFD8X300	8" x 25'	8"	25 ft.	8	17.5 lb	029244
F8IFD10X300	10" x 25'	10"	25 ft.	8	22.5 lb	029251
F8IFD12X300	12" x 25'	12"	25 ft.	8	26.3 lb	029268
F8IFD14X300	14" x 25'	14"	25 ft.	8	29.0 lb.	029350

Mobile Home Insulated Flexible Ducts – R4.2 Black Jacket

- Extra-heavy polyethylene jacket.
- R-4.2 Value.



Model #	Size	Diameter	Length	R-Value	Weight	UPC Item Code (050206)
MIF12X300	12" x 25'	12"	25 ft.	4.2	18.5 lb	922620
MIF14X300	14" x 25'	14"	25 ft.	4.2	20.0 lb.	922729

Trunk & Branch Lines

Half Section Rectangular Ducts

- Main trunk lines for system supply.
- Snaps together – no tools needed.
- Notched corners for connecting sections, or use cleats.
- 28-gauge galvanized steel.
- **SOLD IN HALF SECTIONS.**



Round Metal Duct Pipes

- Snap-lock design.
- Crimped end with stop-bead for easy interlocking fit.
- Galvanized steel construction.
- Cut to length with tin snips.



Standard Beaded

Beaded Metal Duct Pipes (5 ft. Sections)

Model #	Diameter	Bundle Qty.	Weight	UPC Item Code (050206)
BDCP4X60	4"	10	31 lb	032893
BDCP5X60	5"	10	36 lb	032909
BDCP6X60	6"	10	42 lb	032916
BDCP7X60	7"	10	52 lb	032923
BDCP8X60	8"	10	58 lb	032930
BDCP10X60	10"	10	74 lb	032947
BDCP12X60	12"	10	96 lb	032961

Model #	Size	Length	Bundle Qty.	Carton Qty.	Weight	UPC Item Code (050206)
RD12X8X48	12" x 8"	4 ft.	6	6	34 lb	950104
RD14X8X48	14" x 8"	4 ft.	6	6	37 lb	950159
RD16X8X48	16" x 8"	4 ft.	6	6	39 lb	950203
RD24X8X48	24" x 8"	4 ft.	6	6	48 lb	950302

Round Metal Duct Pipes (2 ft. & 3 ft. Sections)

Model #	Diameter	Bundle Qty.	Weight	UPC Item Code (050206)
BCP3X24	3"	10	8.75 lb	920107
BCP4X24	4"	10	10.5 lb	920206
BCP5X24	5"	10	12.0 lb	920305
BCP6X24	6"	10	15 lb	920404
BCP7X24	7"	10	16 lb	920503
BCP8X24	8"	10	20 lb	920602
BCP3X36	3"	10	14.2 lb	921401
BCP4X36	4"	10	18.2 lb	921500
BCP5X36	5"	10	22.2 lb	920701
BCP6X36	6"	10	26.2 lb	921609
BCP7X36	7"	10	30.1 lb	921708
BCP8X36	8"	10	34.1 lb	921807

Round Metal Duct Pipes (5 ft. Sections)

Model #	Diameter	Bundle Qty.	Weight	UPC Item Code (050206)
CP3X60	3"	10	24 lb	920800
CP4X60	4"	10	31 lb	920909
CP5X60	5"	10	36 lb	921005
CP6X60	6"	10	42 lb	921104
CP7X60	7"	10	52 lb	921203
CP8X60	8"	10	58 lb	921302
CP10X60	10"	10	74 lb	920145
CP12X60	12"	10	96 lb	920244
CP14X60	14"	10	132 lb	920343

Transitions & Connectors

This section includes elbows, reducers, wyes, tees, and other accessories.

90-Degree Round Adjustable Elbows

- Used to make angular turns in runs of pipe.
- Adjustable to any angle through 90 degrees.



Model #	Diameter	Carton Qty.	Weight	UPC Item Code (050206)
B90E3	3"	24	9.6 lb	923009
B90E4	4"	24	12 lb	923108
B90E5	5"	24	17.5 lb	923207
B90E6	6"	24	21 lb	923306
90E7	7"	12	14 lb	923405
90E8	8"	12	17 lb	923504
90E10	10"	6	17.5 lb	923603
90E12	12"	6	21 lb	923702
90E14	14"	6	24 lb	923740

Transitions & Connectors

Round Reducers/Increasers

- Used to reduce or increase diameter of pipe.
- Collar edges hemmed for added strength and safety.



Model #	Size	Carton Qty.	Weight	UPC Item Code (050206)
R4X3	4" to 3"	12	3.96 lb	925508
R5X4	5" to 4"	12	5.5 lb	925607
R6X4	6" to 4"	12	6.5 lb	925706
R6X5	6" to 5"	12	7.5 lb	925805
R7X4	7" to 4"	12	7.5 lb	925980
R7X6	7" to 6"	12	7.5 lb	925904
R8X6	8" to 6"	12	9.5 lb	926000
R8X7	8" to 7"	12	9.5 lb	926307
R10X8	10" to 8"	6	7.55 lb	926109
R12X10	12" to 10"	6	8.3 lb	926208
R14X12	14" to 12"	6	12.5 lb	926406

Wyes

- Also called wye joints or reducing laterals.
- Used primarily for heating and air conditioning applications for transition from one pipe to two pipes.



Model #	Size	Carton Qty.	Weight	UPC Item Code (050206)
Y4X4X4	4" to 4" x 4"	6	8.3 lb	925089
Y6X6X6	6" to 6" x 6"	6	12 lb	925188
Y8X6X6	8" to 6" x 6"	6	12.3 lb	925102
Y8X8X8	8" to 8" x 8"	4	8.2 lb	925140
Y10X8X8	10" to 8" x 8"	6	16 lb	033777

45-Degree Wye Saddle

- Used to splice into an existing run of round pipe of equal or larger diameter.
- 45-degree angle branch.



Model #	Size	Carton Qty.	Weight	UPC Item Code (050206)
45YS4	4" to 4"	6	4 lb	029367

Round Tees

- Used for venting bath & kitchen fans as well as heating and air-conditioning applications.
- For 90-degree branch with same diameters.
- Use reducers/increasers to modify multiple pipe-size connections.
- 30-gauge galvanized steel.



Model #	Diameter	Carton Qty.	Weight	UPC Item Code (050206)
T3X3X3	3"	6	3.5 lb	924105
T4X4X4	4"	6	4 lb	924204
T5X5X5	5"	6	7 lb	924303
T6X6X6	6"	6	7 lb	924402
T8X8X8	8"	6	10.3 lb	924600

Tee Saddle

- Used to splice into an existing run of round pipe of equal or larger diameter.
- 90-degree angle branch.



Model #	Size	Carton Qty.	Weight	UPC Item Code (050206)
TS6	6" to 6"	6	5.8 lb	924907

Transitions & Connectors

Ductboard Triangular Terminal Box

- Precut for easy assembly using approved foil tape.
- FSK reinforced backing.



Model #	Size	R-Value	Carton Qty.	Weight	UPC Item Code (050206)
DTTB15	15"	6	6	18 lb	963203

In-Wall Duct Systems

This section includes rectangular stack (riser) and oval duct components.

Half Section Rectangular Stack Ducts

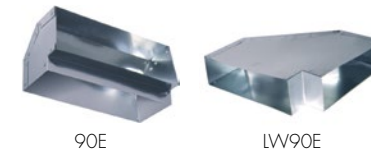
- For use between wall studs for venting: kitchen & bath fans; range hoods; heating & air-conditioning supply; and return ducts.
- Snap together – no tools needed.
- Can be cut with tin snips.
- **SOLD IN HALF SECTIONS**



Model #	Size	Carton Qty.	Weight	UPC Item Code (050206)
RD2.25X12X24	2 1/4" x 12"	12	13 lb	921852
RD3.25X10X36	3 1/4" x 10"	18	30 lb	921906
RD3.25X12X36	3 1/4" x 12"	12	23 lb	921968
RD3.25X14X36	3 1/4" x 14"	12	27.3 lb	922002
RD3.25X10X60	3 1/4" x 10"	12	50 lb	921944
RD3.25X12X60	3 1/4" x 12"	12	55.2 lb	921746
RD3.25X14X60	3 1/4" x 14"	12	48 lb	922040

Rectangular Stack Elbows

- Used with rectangular stack duct for 90-degree turns.
- Available in short-way and long-way configurations.



Model #	Size	Carton Qty.	Weight	UPC Item Code (050206)
90E3.25X10	3 1/4" x 10" Short	6	3.8 lb	923801
LWV90E10X3.25	10" x 3 1/4" Long	6	9 lb	923900

Rectangular Stack Head

- For transition from rectangular stack duct to air register or grill (normally side wall registers).



Model #	Size	Dimensions	Carton Qty.	Weight	UPC Item Code (050206)
SH10X6	3 1/4" x 10"	10" x 6"	8	12 lb	932704

Stack Boots

- For straight line transition from round pipe or insulated flexible duct to rectangular stack duct.



Model #	Size	Diameter	Carton Qty.	Weight	UPC Item Code (050206)
SB12X2.25X6	12" x 2 1/4"	6"	12	16.8 lb	930809
SB10X3.25X4	10" x 3 1/4"	4"	16	12.65 lb	930021
SB10X3.25X5	10" x 3 1/4"	5"	14	11.05 lb	930120
SB10X3.25X6	10" x 3 1/4"	6"	12	13 lb	929902
SB10X3.25X7	10" x 3 1/4"	7"	10	10.2 lb	930007

In-Wall Duct Systems

Stack Boot – 90-Degree

- For right-angle transition from round pipe or insulated flexible duct to rectangular stack duct.



Model #	Size	Diameter	Carton Qty.	Weight	UPC Item Code (050206)
9OSB10X3.2X6	10" x 3 1/4"	6"	9	11 lb	930403

Rectangular Stack Duct Cap

- Used to terminate or block-off a run of rectangular stack duct.



Model #	Size	Carton Qty.	Weight	UPC Item Code (050206)
DC3.25X10	3 1/4" x 10"	6	2.25 lb	937129

Rectangular Stack Duct Starting Collar

- For transition from plenum or flat surface to stack duct.



Model #	Size	Carton Qty.	Weight	UPC Item Code (050206)
SCF3.25X10	3 1/4" x 10"	6	4.15 lb	932308

Fan Boot

- For transition from range hood top 3 1/4" x 10" opening to round pipe.
- Crimped collar.



Model #	Size	Diameter	Carton Qty.	Weight	UPC Item Code (050206)
FB3.25X10X7	3 1/4" x 10"	7"	10	12 lb	936528

Oval Pipe

- For use between walls for supplying air to highwall registers or other floors.
- Efficient alternative to rectangular stack (riser) duct.



Model #	Size	Bundle Qty.	Weight	UPC Item Code (050206)
OP6X60	6" x 5'	10	43 lb	985007

90-Degree Oval Vertical Elbow

- For changing the vertical direction of a run of oval pipe.



Model #	Diameter	Carton Qty.	Weight	UPC Item Code (050206)
OV90E6	6"	12	8.7 lb	985205

In-Wall Duct Systems

90-Degree Oval Flat Elbow

- For changing the horizontal direction of a run of oval pipe.



Model #	Diameter	Carton Qty.	Weight	UPC Item Code (050206)
OF90E6	6"	12	10.5 lb	985304

Oval Stack Heads with Wings

- Provides right-angle transition from oval pipe to side wall register.
- Built-in wings for easy attachment to wall studs.



Model #	Size	Carton Qty.	Weight	UPC Item Code (050206)
OSHW10X6X6	10" x 6" to 6"	8	11 lb	985403
OSHW12X6X6	12" x 6" to 6"	6	8.9 lb	985502

Oval-to-Round Boot

- Provides straight transition from round pipe or insulated flexible duct to oval pipe.



Model #	Size	Carton Qty.	Weight	UPC Item Code (050206)
OTRB6	6" to 6"	8	6.6 lb	985601

Oval-to-Round Boot – 90-Degree

- Provides right-angle transition from round pipe or insulated flexible duct to oval pipe.



Model #	Size	Carton Qty.	Weight	UPC Item Code (050206)
OTR90B6	6" to 6"	10	9.5 lb	985700

Oval-to-Round Boot – End

- For transition from round pipe or insulated flexible duct to oval pipe.



Model #	Size	Carton Qty.	Weight	UPC Item Code (050206)
OTREB6	6" to 6"	8	5.4 lb	985809

Register Boxes

This section includes all styles and configurations of register boxes.

Universal (Straight) Register Boxes

- For transition from round pipe or insulated flexible duct to air register or grill.



Model #	Size	Diameter	Carton Qty.	Weight	UPC Item Code (050206)
RB8X4X5	8" x 4"	5"	10	7 lb	927441
RB8X8X6	8" x 8"	6"	6	7.5 lb	926468
RB12X2.25X6	12" x 2.25"	6"	6	7 lb	926604
RB10X4X4	10" x 4"	4"	12	12.5 lb	926741
RB10X4X5	10" x 4"	5"	12	14 lb	926765
RB10X4X6	10" x 4"	6"	12	14.5 lb	926802
RB10X6X6	10" x 6"	6"	14	13.05 lb	926901
RB10X10X8	10" x 10"	8"	6	9.4 lb	926444
RB12X4X6	12" x 4"	6"	9	13 lb	927007
RB12X6X6	12" x 6"	6"	6	9 lb	927106
RB14X6X8	14" x 6"	8"	8	12.8 lb	927403
RB14X8X8	14" x 8"	8"	10	17.5 lb	927427

90-Degree Register Boxes

- For right-angle transition from round pipe or insulated flexible duct to air register or grill.



Model #	Size	Diameter	Carton Qty.	Weight	UPC Item Code (050206)
9ORB12X2.2X6	12" x 2.25"	6"	6	10 lb	927601
9ORB10X4X5	10" x 4"	5"	10	16 lb	927748
9ORB10X4X6	10" x 4"	6"	10	16.3 lb	927809
9ORB10X6X6	10" x 6"	6"	8	14 lb	927908
9ORB12X4X5	12" x 4"	5"	9	14.8 lb	928080
9ORB12X4X6	12" x 4"	6"	6	10.2 lb	928004
9ORB12X6X6	12" x 6"	6"	7	12.8 lb	928103

End Register Boxes

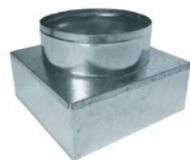
- For right-angle center-end transition from round pipe or insulated flexible duct to air register or grill.



Model #	Size	Diameter	Carton Qty.	Weight	UPC Item Code (050206)
ERB12X2.2X6	12" x 2.25"	6"	6	8.8 lb	928707
ERB10X4X5	10" x 4"	5"	6	6.5 lb	928769
ERB10X4X6	10" x 4"	6"	6	7 lb	928622
ERB10X6X6	10" x 6"	6"	6	8 lb	928721
ERB12X4X6	12" x 4"	6"	6	8.3 lb	928806

Ceiling Register Boxes

- For transition from round pipe or insulated flexible duct to air register or grill.



Model #	Size	Diameter	Carton Qty.	Weight	UPC Item Code (050206)
CRB6X6X6	6" x 6"	6"	6	6.0 lb	945056
CRB8X8X6	8" x 8"	6"	9	10.9 lb	945124
CRB10X10X8	10" x 10"	8"	6	9.5 lb	945322
CRB12X12X8	12" x 12"	8"	6	15 lb	945506

GreenBoots™

- Presealed and Preinsulated R-6 Register Boxes.
- Installation rails included.
- For transition from round pipe or insulated flexible duct to air register or grill.



Model #	Size	Diameter	R-Value	Carton Qty.	Weight	UPC Item Code (050206)
DTB10X4X6	10" x 4"	6"	6	7	15 lb	031605
DTB10X6X6	10" x 6"	6"	6	7	14 lb	031612

Register Boxes

Insulated Register Boxes

- For transition from round pipe or insulated flexible duct to air register or grill.
- Insulated – no need to wrap. Insulation serves as noise deadener and helps control condensation.



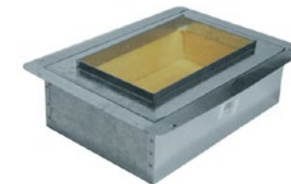
Register Box Saddles

- Horizontal transition from round pipe to air register or grill.
- Can be cut down if necessary.



Duct Board Insulated Register Boxes – R6

- For transition from round pipe or insulated flexible duct to air register or grill.
- R-6.0 Duct Board Insulation.
- Preinsulated – no need to wrap.
- Insulation serves as noise deadener and helps control condensation.



Snap-On Rail

- Easy method to attach flanged register boxes to joists or other nailing surfaces.



Cold Air Frame

- Used in a heating & air conditioning system to provide the transition from the wall duct chase to a wall grille.



Model #	Size	Diameter	R-Value	Carton Qty.	Weight	UPC Item Code (050206)
IRB8X4X4	8" x 4"	4"	6	6	9.8 lb	929100
IRB8X4X5	8" x 4"	5"	6	6	9.8 lb	929124
IRB10X6X6	10" x 6"	6"	6	8	18 lb	929704
IRB12X6X6	12" x 6"	6"	6	8	18 lb	929803
IRB12X6X7	12" x 6"	7"	6	6	14.3 lb	929308
IRB12X6X8	12" x 6"	8"	6	6	14.3 lb	929506
IRB14X6X8	14" x 6"	8"	6	5	13.3 lb	929605

Model #	Size	Carton Qty.	Weight	UPC Item Code (050206)
RBS10X4	10" x 4"	6	8 lb	939420
RBS12X4	12" x 4"	6	9.5 lb	939444

Model #	Size	R-Value	Carton Qty.	Weight	UPC Item Code (050206)
DIRB6X6	6" x 6"	6	9	18.8 lb	928943
DIRB8X4	8" x 4"	6	12	24.8 lb	929148
DIRB8X8	8" x 8"	6	6	16.92 lb	929049
DIRB10X6	10" x 6"	6	6	17 lb	929742
DIRB10X8	10" x 8"	6	6	19.9 lb	930182
DIRB10X10	10" x 10"	6	6	16.7 lb	929940
DIRB12X6	12" x 6"	6	6	19 lb	929841
DIRB12X8	12" x 8"	6	6	16.25 lb	929544
DIRB12X12	12" x 12"	6	4	17 lb	929445

Model #	Carton Qty.	Weight	UPC Item Code (050206)
6SOR24	12	20.55 lb	929667

Model #	Size	Carton Qty.	Weight	UPC Item Code (050206)
CAF14X6	14" x 6"	6	5 lb	029374

Register Boxes

Universal Register Boxes with Flange

- For transition from round pipe or insulated flexible duct to air register or grill.
- Built-in flange to provide: area for register screws, sheet rock frame, nailing area for joists, and ability to install box before drywalling.



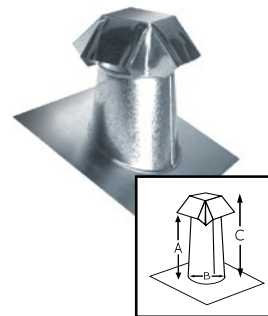
Model #	Size	Diameter	Carton Qty.	Weight	UPC Item Code (050206)
RBF8X4X6	8" x 4"	6"	6	8 lb	938522
RBF10X4X6	10" x 4"	6"	12	13.1 lb	938508
RBF10X6X6	10" x 6"	6"	12	17 lb	938607
RBF12X4X6	12" x 4"	6"	6	8.2 lb	938706
RBF12X6X6	12" x 6"	6"	5	8.5 lb	938805
RBF12X12X8	12" x 12"	8"	6	15.5 lb	939109
RBF14X6X8	14" x 6"	8"	4	8.7 lb	938904
RBF14X8X8	14" x 8"	8"	7	14.5 lb	939000

Rooftop Venting

This section includes all products installed on or above the roof.

Roof Jacks with Vent Caps

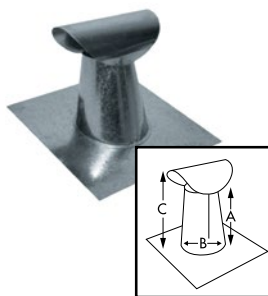
- Used to receive and cover venting duct pipe from kitchen & bath fans, and for attic ventilation.
- Built-in roof flashing – press-sealed design for maximum leak protection.
- Made for 4:12 roof pitch.
- Adapts to pitches from 3:12 to 5:12.
- Includes cap for rain, snow, and debris protection.
- RJVC Models – 28-gauge
- 26RJVC Models – 26-gauge



Model #	Fits Pipe Diam.	Base Size	Dimensions			Carton Qty.	Weight	UPC Code (050206)
			A	B	C			
RJVC3	3"	12" x 12"	8.5"	5.125"	10.25"	6	13.8 lb	936009
RJVC4	4"	13" x 13"	8.125"	6.125"	10.25"	6	15 lb	936108
RJVC5	5"	15" x 15"	8.125"	7.125"	10.5"	6	18.96 lb	034651
RJVC6	6"	15" x 15"	8.25"	8.125"	10.75"	6	21.5 lb	936306
RJVC7	7"	15" x 15"	6.625"	8.125"	9"	6	24 lb	936405
RJVC8	8"	18" x 18"	9.75"	10.125"	12.5"	6	29 lb	936504
26RJVC4	4"	13" x 13"	8.125"	6.125"	10.125"	6	16 lb	936023
26RJVC5	5"	15" x 15"	8.825"	7.125"	10.5"	6	18 lb	936061
26RJVC6	6"	15" x 15"	8.25"	8.125"	10.75"	6	22 lb	936085
26APV10	10"	16" x 16"	10.375"	9.875"	12"	6	27 lb	943250
F26RJVC4	4"	13" x 13"	7.625"	7.125"	10.125"	6	16 lb	936184
F26RJVC5	5"	15" x 15"	8.125"	7.125"	9.875"	6	18 lb	936269
F26RJVC6	6"	15" x 15"	8.25"	8.125"	10.75"	6	22 lb	936283
F26APV10	10"	16" x 16"	10"	9.875"	11.75"	10	40.5 lb	002032

Roof Jacks with Wagon Caps

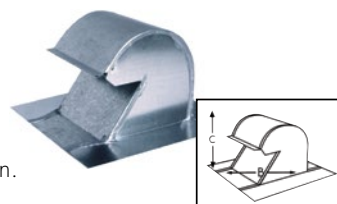
- Used to receive and cover venting duct pipe from kitchen & bath fans, and for attic ventilation.
- Built-in roof flashing – press-sealed design for maximum leak protection.
- Made for 4:12 roof pitch.
- Adapts to pitches from 3:12 to 5:12.
- Includes cap for rain, snow, and debris protection.
- 28-gauge



Model #	Fits Pipe Diam.	Base Size	Dimensions			Carton Qty.	Weight	UPC Code (050206)
			A	B	C			
RJWC4	4"	13" x 13"	6.875"	6.125"	8.5"	6	11.5 lb	939802
RJWC7	7"	15" x 15"	6.375"	8.125"	9.75"	6	16 lb	939901

Goose Neck Vents

- **Galvanized**
- Heavy-duty screen for small animal protection.
- Works well on all pitched roofs.
- Ample flashing for leak protection.
- 26-gauge



Model #	Fits Pipe Diam.	Base Size	Dimensions		Carton Qty.	Weight	UPC Code (050206)
			B	C			
GNV4	4"	11.625" x 9.125"	4.125" x 6.5"	6.375"	6	9.8 lb	936047
GNV6	6"	11.75" x 11.25"	6.125" x 6.625"	6.25"	6	10.5 lb	936146
GNV10	10"	16" x 16"	10" x 10"	8.75"	6	22.5 lb	936344

Rooftop Venting

Goose Neck Vents in Aluminum

- **Aluminum**
- Heavy-duty screen for small animal protection.
- Great for appliance venting.
- Includes damper.



Model #	Fits Pipe Diam.	Base Size	Carton Qty.	Hood Height	Weight	UPC Code (050206)
GNV4A	4"	9" x 11"	6	4.5"	5.05 lb	002322
GNV10A	10"	16" x 12"	6	7.75"	12.0 lb	005491

Goose Neck Vents in Black

- **Galvanized – Black**
- Heavy-duty screen for small animal protection.
- Great for appliance venting.
- Includes damper.
- 28-gauge
- GNV10BL - No Collar



Model #	Fits Pipe Diam.	Base Size	Carton Qty.	Hood Height	Weight	UPC Code (050206)
GNV4BL	4"	9" x 11"	6	4.5"	8.4 lb	005491
GNV5BL	5"	9" x 11"	6	4.5"	10.5 lb	031353
GNV6BL	6"	14.75" x 13.5"	6	6.25"	17.5 lb	034620
GNV7BL	7"	14.75" x 13.5"	6	6.25"	17.65 lb	029169
GNV10BL	10"	16" x 12"	6	7.75"	14.5 lb	005484

Vent Caps

- To cap pipes through roof for rain, snow, and debris protection.
- 28-gauge



Model #	Fits Pipe Diam.	Carton Qty.	Weight	UPC Code (050206)
VC3	3"	10	5.8 lb	935101
VC4	4"	6	4.5 lb	935200
VC5	5"	6	4.5 lb	935309
VC6	6"	7	7.5 lb	935408
VC7	7"	6	6.6 lb	935507

Adjustable Versa Caps

- Recommended for flue, hot stack, or B-vent installations.
- Non-clogging positive draft design.
- Clamp fittings adjustable for all standard sizes.
- Aluminum construction.



Model #	Fits Pipe Diam.	Overall Height	Overall Diameter	Single & Double Wall Metal Pipe	Carton Qty.	Weight	UPC Code (050206)
3050	2.875" – 4.875"	4.5"	6.625"	3" & 4"	6	13.8 lb	936009
5070	4.875" – 6.875"	4.75"	9.5"	5" & 6"	6	15 lb	936108
7090	6.875" – 8.875"	5.875"	11.625"	7" & 8"	6	18.96 lb	034651
9011	8.875" – 10.875"	6.5"	12.75"	9" & 10"	6	21.5 lb	936306
1200	11.875" – 14"	8.6875"	17.5625"	12"*	6	24 lb	936405

*Single wall pipe covers 12" & 14"

Roof Flashings with Tapered Stacks

- Used as boot flashings around pipes extending through roof.
- Tapered stack adapts to roof pitches from 3:12 to 5:12.
- Built-in roof flashing – press-sealed design for maximum leak protection.
- 28-gauge



Model #	Fits Pipe Diam.	Base Size	Dimensions			Carton Qty.	Weight	UPC Code (050206)
			A	B	C			
RFTS1/2	1/2"	12" x 12"	4.625"	6.625"	—	6	5.0 lb	934326
RFTS3/4	3/4"	12" x 12"	3.875"	3.625"	—	6	5 lb	934302
RFTS1	1"	12" x 12"	4.25"	3.625"	—	6	5.0 lb	934401
RFTS3	3"	12" x 12"	6.125"	5.125"	—	12	16 lb	934500
RFTS4	4"	13" x 13"	6.375"	6.125"	—	12	17.5 lb	934609
RFTS5	5"	15" x 15"	6.25"	7.125"	—	6	11 lb	934708
RFTS6	6"	15" x 15"	6.75"	8.125"	—	6	12 lb	934807
RFTS7	7"	15" x 15"	6.5"	8.125"	—	6	16 lb	934821

Rooftop Venting

Storm Collars

- For rain, snow, and debris protection.
- Adjustable for various pitches.
- 28-gauge



Model #	Fits Pipe Diam.	Base Size	Dimensions			Carton Qty.	Weight	UPC Code (050206)
			A	B	C			
SMC3	3"	—	—	—	—	6	1.8 lb	938003
SMC4	4"	—	—	—	—	6	2 lb	937808
SMC5	5"	—	—	—	—	6	2.5 lb	937884
SMC6	6"	—	—	—	—	6	2.5 lb	937907

Lead Roof Flashings

- Used as boot flashings around pipes extending through roof.
- Designed to adjust to most roof pitches.
- 2.5 lb. flashing



Model #	Fits Pipe Diam.	Base Size	Dimensions			Carton Qty.	Weight	UPC Code (050206)
			A	B	C			
LRF1.5	1.5"	8.5" x 10.5"	10.5"	1.5"	—	12	36 lb	001325
LRF2	2"	8.5" x 10.5"	10.5"	2"	—	12	25 lb	001332
LRF3	3"	10.5" x 12"	10.5"	3"	—	6	27 lb	001363
LRF4	4"	10.5" x 12"	10.5"	4"	—	6	31 lb	001370

Heavy Gauge Systems

This section includes heavy-duty 26-gauge and aluminum items.

Round Metal Pipes

- Crimped end with stop-bead for easy interlocking fit.
- Heavier gauge for venting of boilers, furnaces, and water heaters.



Model #	Diameter	Bundle Qty.	Weight	UPC Item Code (050206)
26CP3X24	3"	10	13.8 lb	920008
26CP4X24	4"	10	18 lb	920183
26CP5X24	5"	10	18.9 lb	920282
26CP6X24	6"	10	23.7 lb	920381
26CP7X24	7"	10	25.2 lb	920480
26CP8X24	8"	10	31.6 lb	920589
AP4X24	4"	10	6.9 lb	990209

Adjustable Elbows

- Adjustable to 90-degree angle.
- Crimped end for interlocking fit.
- Heavier gauge for venting of boilers, furnaces, and water heaters.



Model #	Diameter	Carton Qty.	Weight	UPC Item Code (050206)
26B90E3	3"	24	12 lb	922965
26B90E4	4"	24	17 lb	923023
26B90E5	5"	24	22 lb	923221
26B90E6	6"	24	26 lb	923368
2690E7	7"	12	17 lb	923429
2690E8	8"	12	21 lb	923542
A90E4	4"	12	3.7 lb	990247

Tee

- Used for venting bath and kitchen fans, and for heating and air-conditioning applications.
- Use reducers to modify multiple pipe-size connections.



Model #	Diameter	Carton Qty.	Weight	UPC Item Code (050206)
26T6X6X6	6"	6	9.2 lb	924440

Heavy Gauge Systems

Wyes

- Used to vent two appliances together where codes allow.
- Crimped branch pipe in the direction of airflow.



Model #	Size	Carton Qty.	Weight	UPC Item Code (050206)
26FY4X4X4	4" to 4" x 4"	6	9 lb	029336
26FY6X6X6	6" to 6" x 6"	6	12 lb	029343

Reducers

- Used to reduce or increase round pipe from larger to smaller diameter.
- Collar edges hemmed for added strength and better fit.



Model #	Diameter	Carton Qty.	Weight	UPC Item Code (050206)
26R4X3	4" to 3"	12	6 lb	925522
26R6X4	6" to 4"	12	9.7 lb	925720

Stove Pipes

This section includes black stove pipe items.

Black Stove Pipe

- Crimped end with stop-bead for easy interlocking fit.
- Heavier 24-gauge for venting wood stoves.



Model #	Diameter	Carton Qty.	Weight	UPC Item Code (050206)
BAP6X24	6"	6	19.6 lb	029312

Black Stove Pipe Elbow

- Adjustable to 90-degree angle.
- Heavier 24-gauge for venting wood stoves.



Model #	Diameter	Carton Qty.	Weight	UPC Item Code (050206)
BA90E6	6"	6	10.05 lb	006184

Black Stove Pipe Round Tee

- Designed to fit round piping to extend a duct system.
- Heavier 24-gauge for venting wood stoves.



Model #	Diameter	Carton Qty.	Weight	UPC Item Code (050206)
BAT6X6X6	6"	6	11.2 lb	006078

Black Stove Pipe Cast Iron Damper

- Used for adjusting air flow in black stove pipe.
- Cast iron construction.



Model #	Diameter	Carton Qty.	Weight	UPC Item Code (050206)
BACID6	6"	12	12 lb	029329

Stove Pipes

Black Stove Pipe Duct Cap

- Designed to cap round piping so that you can impose stoppage on your stove pipe.
- Removable design allows easy cleaning of a capped stove pipe.
- Heavier 24-gauge for venting wood stoves.

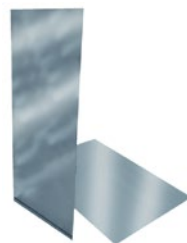


Model #	Diameter	Carton Qty.	Weight	UPC Item Code (050206)
BADC6	6"	6	3.78 lb	006115

Miscellaneous Items

Galvanized Steel Flat Sheets

- Make your own custom fittings.
- Can be cut to size for any application.
- 30-gauge galvanized steel.



Model #	Size	Carton Qty.	Weight	UPC Item Code (050206)
GFS24X361PK	24" x 36"	6	10.7 lb	029008
GFS36X48	36" x 48"	20	90 lb	937068

Round Wall Vents

- Used for outside side wall termination of kitchen and bath fans, range hoods, and microwave venting.
- Built-in gravity damper.
- Built-in screen (WVA4 & WV6SD).
- Aluminum construction.



Model #	Diameter	Carton Qty.	Weight	UPC Item Code (050206)
WVA4	4"	6	6 lb	777770
WVA6	6"	6	7 lb	937501
WVA7	7"	6	7.5 lb	937600

Rectangular Wall Vent

- Used for outside sidewall termination of kitchen and bath fans, range hoods, and microwave venting.
- Spring-controlled damper with foam gasket for tighter seal and quiet operation.
- Aluminum construction.



Model #	Size	Carton Qty.	Weight	UPC Item Code (050206)
WVA3.25X10	3.25" x 10"	6	5.7 lb	937709

Round Wall Vent – Black

- Used for outside side wall termination of kitchen and bath fans, range hoods, and microwave venting.
- Built-in gravity damper.
- Built-in screen.
- Black galvanized construction.



Model #	Diameter	Carton Qty.	Weight	UPC Item Code (050206)
WVA4BL	4"	6	6 lb	999097

Miscellaneous Items

Fresh Air Vents

- Used to intake air into a combustion system or where fresh air intake is needed.
- Built-in bird screen.
- Galvanized steel construction.



Straps & Hangers

- Used to hang insulated flexible duct, round pipe, rectangular duct, or plumbing pipe, depending on item.
- Helps prevent sagging over long runs.



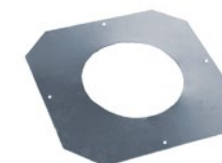
Splice Collars

- Coupling used to connect two sections of insulated flexible duct.
- Crimped on both ends for an easy fit.



Ceiling Collars

- Used as finishing piece where pipe passes through ceiling, wall, or floor.



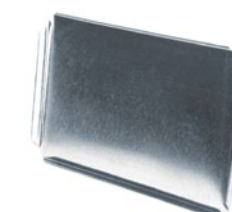
Round Duct Caps

- Used to terminate round pipe run.



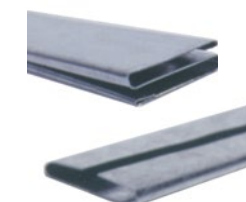
Rectangular Duct Caps

- Used to terminate rectangular duct run.
- 28-gauge galvanized steel.



"S" & Drive Cleats

- For joining pieces of rectangular duct or rectangular stack duct.
- Galvanized steel construction.



Model #	Diameter	Carton Qty.	Weight	UPC Item Code (050206)
FAV4	4"	6	6.6 lb	937723
FAV5	5"	6	7.4 lb	937747
FAV6	6"	6	7.8 lb	937761

Model #	Size	Carton Qty.	Weight	UPC Item Code (050206)
3/4HS	3/4" x 100 ft.	10	33 lb	954003
HS1.75VW	1 3/4" x 100 yds.	12	20.5 lb	955062
HS1.5S28	1 1/2" x 100 ft.	5	48.5 lb	029183
6DH12	12" perf steel strap. 6/pkg.	12	15 lb	954065

Model #	Diameter	Carton Qty.	Weight	UPC Item Code (050206)
FC4	4"	20	5.5 lb	934227
FC6	6"	18	8.75 lb	934265

Model #	Diameter	Carton Qty.	Weight	UPC Item Code (050206)
CC4	4"	6	1.5 lb	933701
CC6	6"	6	1.5 lb	933800

Model #	Diameter	Carton Qty.	Weight	UPC Item Code (050206)
DC3	3"	6	2 lb	937105
DC4	4"	6	1.08 lb	937204
DC5	5"	6	2.5 lb	937228
DC6	6"	6	2.5 lb	937303
8DC	8"	6	3 lb	937327

Model #	Size	Carton Qty.	Weight	UPC Item Code (050206)
RDC12X8	12" x 8"	6	5 lb	952108
RDC14X8	14" x 8"	6	6 lb	952153
RDC16X8	16" x 8"	6	6 lb	952207
RDC24X8	24" x 8"	6	7.5 lb	952306

Model #	Description	Carton Qty.	Weight	UPC Item Code (050206)
CS60	"S" Cleat	24	25.7 lb	948903
CD60	Drive Cleat	24	13.85 lb	959701

Miscellaneous Items

Dampers

- For balancing and adjusting air flow in individual runs of round pipe.
- Spring-loaded hardware for easy mounting into existing round pipe.



Model #	Diameter	Carton Qty.	Weight	UPC Item Code (050206)
D-4	4"	6	1.2 lb	933107
D-6	6"	6	2 lb	933305
D-8	8"	6	2 lb	933503

Butterfly Damper

- Designed to vent a range hood or microwave via round exhaust duct.
- Split-sided gravity damper design.



Model #	Diameter	Carton Qty.	Weight	UPC Item Code (050206)
BDD7	7"	6	3 lb	029176

Bathroom Exhaust Eave Vent

- Used to vent bathroom exhaust through the undereaves.
- 4" length.
- White plastic construction – matches most undereaves.
- Easy installation with router saw.



Model #	Diameter	Carton Qty.	Weight	UPC Item Code (050206)
BFEV4	4"	12	4 lb	923252

R-6 Ductwork Insulation Sleeves & Wrap

- Used to insulate round metal pipe or rectangular duct.
- Convenient sizes for smaller jobs.
- Easy installation for new and existing ductwork.



Model #	Size	Diameter	R-Value	Carton Qty.	Weight	UPC Item Code (050206)
INSLV6	6" Sleeve x 5'	6"	6	9	18 lb	023327
INSLV8	8" Sleeve x 5'	8"	6	9	18 lb	023310
INSWRP60	60 sq. ft. Wrap 2' x 30'	—	6	3	35.6 lb	023334

Water-Based Duct Sealants/Mastics

- Used to seal all ductwork seams.



Model #	Size	Carton Qty.	Weight	UPC Item Code (050206)
WBA10.5	10.5-oz. Tube	12 Tubes	12.75 lb	269541
WBA50	1/2-Gallon Tub	8 Tubs	45.6 lb	992005

Fiberglass Weave

- Used with water-based sealant to reinforce seams.



Model #	Size	Carton Qty.	Weight	UPC Item Code (050206)
FGW3	3" x 150'	24 Rolls	12 lb	993002

Miscellaneous Items

Hex Type Screws (100 Pack) No. 8 x 3/4"

- No. 8 x 3/4" piercing, slotted hex head.



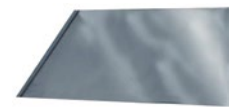
FlexRIGHT Flexible Duct Elbow

- Forms 90-degree flexible duct elbow.
- Fits sizes 4" to 16" flexible duct.
- Easy installation for new and existing ductwork.



Evaporative Cooler Dampers

- Helps limit the loss of heat during winter months in evaporative coolers.
- Galvanized steel construction.



Model #	Size	Carton Qty.	Weight	UPC Item Code (050206)
HT8X.75	No. 8 x 3/4" 100 per pack	21 pks.	9.2 lb	991008

Model #	Diameter	Carton Qty.	Weight	UPC Item Code (050206)
FR-2R	4" to 16"	12	8.8 lb	031674

Model #	Size	Carton Qty.	Weight	UPC Item Code (050206)
ECSD18	18"	6	10 lb	980408
ECSD20	20"	6	11.5 lb	980200

Kits

Add-A-Vent Room Addition Duct Kit

- Kit contains most of the ducting items needed in most standard room additions.



Model #	Diameter	R-Value	Carton Qty.	Weight	UPC Item Code (050206)
AAV6	6"	6	1	10 lb	031599

Add-A-Vent Room Addition Duct Kit Includes:

- 12 lin. ft. of R-6 6-in. insulated flexible duct
- 1 6-in. starting collar
- 1 10-in. x 4-in. x 6-in. straight register boot
- Installation rails
- Boot clips
- 2 tie straps
- 3 yards of duct hanger
- 15 lin. ft. of duct tape
- 1 white 10-in. x 4-in. ceiling register grill

Rectangular Appliance Wall Exhaust Vent

- Designed to fit most range hoods that will be vented outside through a wall.
- Extra long throat to hold most wall types.



Model #	Size	Carton Qty.	Weight	UPC Item Code (050206)
AVV3.25X10	3.25" x 10"	1	2.55 lb	029305

Appliance Roof Exhaust Vent Kit

- Kit contains all of the ducting items needed in most standard installations for 7-in. range hood vents through the roof.



Model #	Diameter	Carton Qty.	Weight	UPC Item Code (050206)
AVR7	7"	1	9.75 lb	029299

Appliance Roof Exhaust Vent Kit Includes:

- 1 7-in. heavy-duty, black-painted metal roof vent
- 1 7-in. button lock elbow
- 1 3.25-in. x 10-in. transition
- 70" of 7" diameter smooth round pipe

