



Dryer Vents

Model: **SFZ & SFZC**



Model: **SFZ**



Model: **SFZC**
(with Backdraft Damper)

Exceptionally designed for exterior applications, the SFZ and the SFZC are easy to install and have large openings to reduce clogging. Both models are suited to exhaust fan applications such as dryer, bathroom, or kitchen exhaust venting. The heavy-gauge anodized aluminum and stainless steel construction is corrosion-resistant for years of service.

***Note**

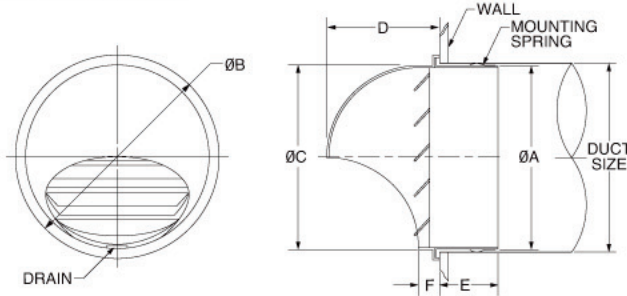
No louver manufacturer warrants their louver to prevent water penetration under all possible circumstances of wind and rain.

MATERIAL	FINISH
● Aluminum	● Clear Anodized
	● Custom Colors Available

FEATURES

- Large Free Area Reduces Clogging
- Made from Machined Anodized Aluminum
- Economical
- Designed for Weather Resistance
- Water Condensation Drain

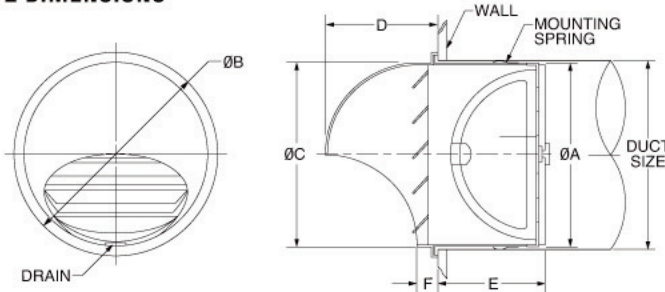
MODEL SFZ DIMENSIONS



MODEL	DUCT SIZE	A	B	C	D	E	F	FREE AREA
SFZ 4	4	3 13/16	4 3/4	3 25/32	2 11/16	1 9/16	9/16	0.04
SFZ 6	6	5 23/32	6 29/32	5 29/32	3 15/16	2 9/16	3/4	0.13

Product information is subject to change without notice. All dimensions in inches.

MODEL SFZC DIMENSIONS



MODEL	DUCT SIZE	A	B	C	D	E	F	FREE AREA
SFZC 4	4	3 13/16	4 3/4	3 25/32	2 11/16	2 5/32	9/16	0.04
SFZC 6	6	5 23/32	6 29/32	5 29/32	3 15/16	3 3/4	3/4	0.13

Product information is subject to change without notice. All dimensions in inches.



