



Bathroom Ventilation



The World's Leading Producer of Air Movement Products



BV_0510

Bathroom Ventilation Concerns...

SOLVED!

We spend hours upon hours in our bathrooms; why not make them as comfortable as possible? No more loud noisy fans that instantly alert you the moment you hit the switch. If the strongest, quietest, bathroom exhaust system is what you seek, look no further. S&P offers a range of inline fans or ceiling mounted fans to fit exactly what you need that offer several advantages over traditional bathroom fans. Our TD and PV lines of fans are available in convenient, all inclusive kits to provide the ultimate bathroom ventilation system. Whether you choose from the popular, and exclusive, TD series bathroom exhaust kits (for single or dual venting points), or the ultra powerful PV series (also, in single or dual vents) for long or complicated duct runs, all S&P bath kits feature a powerful fan mounted in the attic (away from the living space). The result is a “Turbo” powered fan (much stronger than generally associated with bathroom exhaust) and yet a peacefully quiet operation. You also have the choice of the SWF sidewall series fan, featuring the powerful PV motor, when attic space or easy indoor access is difficult or not suitable for traditional in-line mounting. Our V Bathroom Fans, ceiling mounted fans by RenewAire, are the most energy efficient line of ventilation fans available in North America.



Our remote mounted fans are powerful enough to vent multiple areas with one unit (dual vent - dv kits) for today’s larger bathrooms; venting multiple bathrooms with one unit is also possible. The remote mounting feature allows peace and quiet in the living space, thus reducing the sound level of a generally noisy fan. S&P remote fans also offer extended duty times, are low maintenance and help reduce moisture, which decreases the likelihood of mold or mildew. Plus, they do not detract from the homes aesthetics unlike some unsightly roof mounted units. S&P remote fans are the clear choice for the strongest, quietest installation.

In addition to our fans and kits, S&P offers a complete line of grilles and switches. When used in combination S&P offers the perfect solution with the most options!

Fans & Kits



Grilles



Controls & Switches






Look for our “Fans for Life” symbol

We certify the fans that bear this symbol offer the lowest possible energy use and running costs, while still providing the highest possible performance.

Bathroom Ventilation Options Guide

This Ventilation Options Guide is designed to help you choose with S&P fan is perfect for your bathroom.

Model	Mounting Locations			Impeller Type		Certifications			CFM Range (at 0" SP)
	Inline/Duct	Ceiling	Sidewall	Mixed Flow	Centrifugal	ENERGY STAR	UL	HVI	
TD 	X			X		X	X	X	91-1050
PV 	X				X	X	X	X	108-942
SWF 			X		X		X	X	108-491
V 		X			X	X	X	X	31-150

Bathroom Ventilation with Inline Fans



A Tip from S&P

We recommend the use of Insulated Flexible ducting. This will help reduce sound levels and is better for cold weather climates.

Model TD MIXVENT



The TD Series is the perfect bathroom ventilator for most typical installations. These units handle a significant amount of pressure (associated with most jobs) and unsurpassed air movement, with a minimum of space required. Suitable for 4" through 12" (kits available in 4" and 6") round duct applications, from 97-1050 CFM (cubic feet of air per minute). Strong, quiet, easy to install (in even the tightest spaces) and years of trouble free operation. See page 5 for more information.

Model PV POWERVENT



The PV Series is the perfect solution for installations that require long or complicated duct runs. These sturdy units are available for 4" through 12" round duct installations: from 108-942 CFM. The centrifugal blade designs are able to overcome extreme resistance for even the most challenging installations. The PV offers the same totally enclosed motors as the popular TD series which ensure long, trouble free life. The PV series is the right choice for more difficult installations. See page 11 for more information.

Model SWF SIDEWALL



The SWF Series' outdoor rated exterior housing provides easy access from the outside of a building or dwelling. This makes the SWF a great solution for installations where attic space or easy indoor access is difficult and not suitable for traditional PV style in-line mounting. The Sidewall Fan Series (SWF) of direct drive centrifugal ventilation fans consists of five model sizes: 4" through 8". All models are designed for direct connection in-line with standard diameter round ducting. Airflow performance values range from 119-416 CFM. See page 18 for more information.

Inline Bathroom Ventilation Spotlight - TD Fans



- 2 speed motors allow for 2 performance levels with each unit (100% variable speed).
- Easy access to motor without dismounting the fan unit.
- Easy access to motor without dismounting the fan unit.
- Easy to install.
- Better air flow per size
- Attractive all inclusive kits available.
- 5 year warranty.
- ENERGY STAR® qualified.
- AMCA and HVI



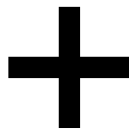
Single Vent with TD Fan



Dual Vent with TD Fan



Ventilation that is Out-of-Sight and Out-of-Mind...



When you use our TD-MIXVENT series with our VL-Vent Light you get ventilation that is “Out-of-Sight and Out-of-Mind”! The Vent Lights appear to be a regular can light, and when combined with a remotely mounted TD fan, the noise and unsightly look of the traditional bathroom fan are gone! The Vent Lights are aesthetically pleasing grilles with lights that will match any bathroom decor.

Single Vent Bathroom Exhaust

Featuring TD-MIXVENT Kits



The TD-MIXVENT fan kits provide all the hardware needed to complete a simple in-line ducted ventilation installation. The kit includes a powerful TD in-line fan and exterior and interior grilles (with or without lights). Available in both Standard Exhaust Kits, for venting a single location, and Deluxe (Dual) Exhaust Kits, for venting multiple locations with one fan.

The TD-MIXVENT fan kit is the ideal solution for any simple in-line ducted fan installation.

All TD kits have standard 7-year warranty.*



Fan Sizing for Bathrooms Under 100 SQ. FT.

The following recommendations follow the Home Ventilating Institute (HVI) guidelines:

FAN SIZING FOR BATHROOMS UNDER 100 Sq. Ft.

The standard rule for bathrooms 100 square feet or smaller is one CFM per square foot of the bathroom. To find the square footage multiply the length of the bathroom by the width.

Example:

10' x 10' bathroom = 100 square feet.

You will need a 100 CFM fan for this bathroom.



Single Vent TD-KIT Bathroom Exhaust Kits

Standard Exhaust Kits



KIT-TD100

- 1 TD100 exhaust fan
- 1 plastic round grille (PG-100)
- 1 exterior louvered grille (PER-100W)
- Integral mounting bracket

KIT-TD100x

- 1 TD100x exhaust fan
- 1 plastic round grille (PG-100)
- 1 exterior louvered grille (PER-100W)
- Integral mounting bracket

KIT-TD150

- 1 TD150 exhaust fan
- 1 plastic round grille (PG-150)
- 1 exterior louvered grille (PER-150W)
- Integral mounting bracket

Lighted Standard Exhaust Kits



KIT-TD100XL

- 1 TD100x exhaust fan
- 1 Vent Light with LED Bulb (VLED-100)
- Integral mounting bracket

KIT-TD100XH

- 1 TD100x exhaust fan
- 1 Vent Light with Halogen Bulb (VLH-100)
- Integral mounting bracket

KIT-TD100XF

- 1 TD100x exhaust fan
- 1 Vent Light with Fluorescent Bulb (VLF-100)
- Integral mounting bracket

IMPORTANT: If venting in a non-insulated attic space, or in a cold climate, insulated flexible duct is strongly recommended for condensation issues.

*Light Bulbs not included in 7 year warranty.

Dual Vent Bathroom Exhaust

Fan Sizing for Bathrooms Over 100 SQ. FT.

The following recommendations follow the Home Ventilating Institute (HVI) guidelines:

Ventilation for baths over 100 square feet is calculated based on the fixtures in the bathroom. Allow 50 CFM for each standard toilet, shower, steam shower or tub. Whirlpool, garden and hot tubs are calculated at 100 CFM each. Add the CFMs for all fixtures and you'll have the total CFMs required for the bathroom.

Step 1: Calculate Bathroom Size:

20' x 10' Bathroom = 200 square feet

Step 2: 1 Toilet + 1 Shower + 1 Tub = 150 CFM

Result: You will need a 150 CFM fan for this bathroom.



Dual Vent TD-KIT Bathroom Exhaust Kits

Deluxe Exhaust Kits



KIT-TD150-DV

- 1 TD150 exhaust fan
- 2 plastic round grilles (PG-150)
- 1 exterior louvered grille (PER-150W)
- 1 Y-fitting (SY-6)
- Integral mounting bracket

Lighted Deluxe Exhaust Kits



KIT-TD150L

- 1 TD150 exhaust fan
- 2 Vent Lights with LED Bulb (VLED-100)
- 1 Y-fitting (SY44-6)
- Integral mounting bracket

KIT-TD150H

- 1 TD150 exhaust fan
- 2 Vent Lights with Halogen Bulb (VLH-100)
- 1 Y-fitting (SY44-6)
- Integral mounting bracket

KIT-TD150F

- 1 TD150 exhaust fan
- 2 Vent Lights with Fluorescent Bulb (VLF-100)
- 1 Y-fitting (SY44-6)
- Integral mounting bracket

*Light Bulbs not included in 7 year warranty.

For the most effective bathroom ventilation, HVI recommends eight air changes per hour. Fans should be installed as close to the shower as possible and, if marked as suitable for this location, directly over it to capture the moisture as directly as possible. Your fan should have a control that will allow the fan to run at least 20 to 30 minutes after each shower.

An enclosed toilet should have its own exhaust fan. Fans should be located over the shower or tub. Bathroom doors need to have at least 3/4" clearance to the finished floor to allow entry of makeup air. Using a timer or other control ensures that ventilation continues for a minimum of 20 minutes after use of the bathroom. For steam showers, we recommend a separate fan in the steam room that you can turn on after use. Bathroom (continuous ventilation) should be available on a continuous basis at a minimum of 20 CFM in lieu of an intermittent 50 CFM fan.

The Perfect Addition

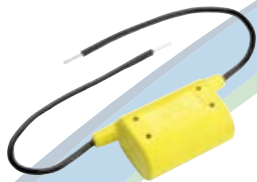


Need to meet ASHRAE 62.2 or looking to continuously ventilate your bathroom? You can use our CVC - Continuous Ventilation Control with any switch you choose! (only available for use with TD fans)



TD Bathroom Exhaust Controls - ASHRAE 62.2

CVC - Continuous Ventilation Control



S&P's CVC allow a new or existing bath fan to run continuously on a low speed. In conjunction with an S&P TD fan a CVC will immediately improve the air quality in the home and reduce the damaging effects of moisture and mold.

The CVCs are designed to meet the requirements of ASHRAE 62.2 and the International Residential Code. In areas where ASHRAE 62.2 is not a requirement the CVC is still an economical choice to improve indoor air quality.

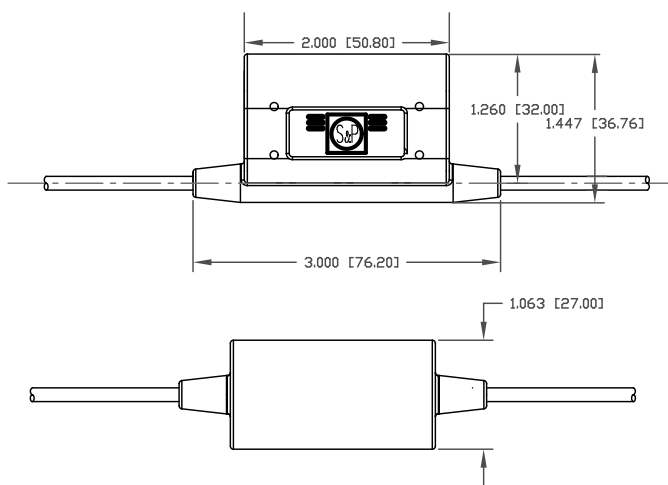
CVC Model	Fan Model*	Application	Max. Flow	Continuous Flow @ .25"SP
CVC-100	TD-100	Single Inlet	101 CFM	20 CFM
CVC-100x	TD-100x	Single Inlet	135 CFM	20 CFM
CVC-150	TD-150	Single Inlet	218 CFM	20 CFM
		Dual Inlet	293 CFM	40 CFM



Features

- Reduces remodeling costs, helps meet ASHRAE 62.2 requirements
- Perfect for homes, apartments, dorms, hotels and elderly housing
- Economical and easy to install in your existing wall box
- CVC works with most fan controls, i.e. motion sensors, timers, speed controllers.
- Improves the indoor air quality in your home
- Undetectable, efficient and effective
- Operates with any standard switch
- No programming required
- 120V, 60 Hz, 3A Maximum

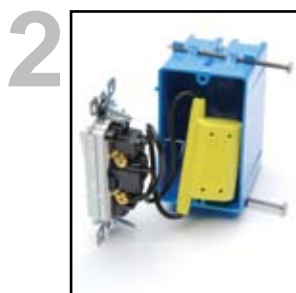
Dimensions in Inches (mm)



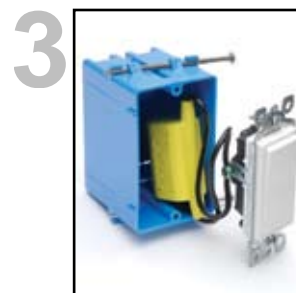
Easy Installation. . .



1 Attaches to any standard wall switch.



2 Simple 2 wire connection across the wall switch and fits into most standard wall/ junction boxes.



3 Completely installed in minutes!

Inline Bathroom Ventilation- PV Fans



- Epoxy coating on inside and outside of fan housing.
- Fully speed controllable
- Perfect for higher static pressure applications
- Extra long inlet and discharge collars make installation quick and trouble free.
- Supplied with a strong galvanized steel mounting bracket.
- All inclusive kits available
- AMCA, HVI certified, and cULus Listed.
- ENERGY STAR® qualified on sizes 150X and larger.
- 5 year warranty.
- Line includes 4 - 12" 108 - 942 CFM.



PV-KIT Bathroom Exhaust Kits

Featuring PV-MIXVENT Fans

S&P PV-POWERVENT Series fans are also available as easy-to-install kits. This ultra powerful bathroom fan offers a choice of single or dual vent exhaust. These kit are used for installations that require long or complicated duct runs. **All PV kits have standard 8-year warranty.**

Standard Exhaust Kits



KIT-PV100

- 1 PV100 exhaust fan
- 1 plastic round grille (PG-100)
- Mounting bracket

KIT-PV100x

- 1 PV100x exhaust fan
- 1 plastic round grille (PG-100)
- Mounting bracket

KIT-PV150

- 1 PV150 exhaust fan
- 1 plastic round grille (PG-150)
- Mounting Bracket

Deluxe Exhaust Kits



KIT-PV100x-DV

- 1 PV100x exhaust fan
- 2 plastic round grilles (PG-100)
- 1 Y-fitting (SY-4)
- Mounting Bracket


KIT-PV150-DV

- 1 PV150 exhaust fan
- 2 plastic round grilles (PG-150)
- 1 Y-fitting (SY-6)
- Mounting Bracket

KIT-PV200-DV








- 1 PV200 exhaust fan
- 2 plastic round grilles (BOR-200)
- 1 Y-fitting (SY-8)
- Mounting Bracket

Bathroom Kit Options Overview

S&P Bathroom Kit Model	CFM @ 0" SP	Single or Dual Venting	Light	ENERGYSTAR® Qualified	Warranty in Years
Standard Exhaust Kits					
KIT-TD100 	Low: 97 High: 101	Single	-	Yes	7
KIT-TD100x 	Low: 100 High: 135	Single	-	Yes	7
KIT-TD150 	Low: 218 High: 293	Single	-	Yes	7
KIT-PV100 	108	Single	-	-	8
KIT-PV100x 	153	Single	-	-	8
KIT-PV150 	245	Single	-	Yes	8
Standard Lighted Exhaust Kits					
KIT-TD100XL 	Low: 100 High: 135	Single	LED	Yes	7*
KIT-TD100XH 	Low: 100 High: 135	Single	Halogen	Yes	7*
KIT-TD00XF 	Low: 100 High: 135	Single	Fluorescent	Yes	7*

*Light Bulbs not included in 7 year warranty.

Bathroom Kit Options Overview

S&P Bathroom Kit Model	CFM @ 0" SP	Single or Dual Venting	Light	ENERGYSTAR® Qualified	Warranty in Years
Deluxe Exhaust Kits					
KIT-TD150DV 	Low: 218 High: 293	Dual	-	Yes	7
KIT-PV100x-DV 	153	Dual	-	-	8
KIT-PV150-DV 	245	Dual	-	Yes	8
KIT-PV200-DV 	402	Dual	-	Yes	8
Deluxe Lighted Exhaust Kits					
KIT-TD150L 	Low: 218 High: 293	Dual	LED	Yes	7*
KIT-TD150H 	Low: 218 High: 293	Dual	Halogen	Yes	7*
KIT-TD150F 	Low: 218 High: 293	Dual	Fluorescent	Yes	7*

*Light Bulbs not included in 7 year warranty.

Bathroom Exhaust Grilles

Featuring Vent Lights and Premium Grilles

S&P's Grille Options give you the choice of seven (7) aesthetically pleasing grilles designed to match any bathroom decor. You can choose from our Vent Lights, Premium Grilles or Adjustable Grilles to fit your needs.

These grilles are designed to be used exclusively with one of S&P's remotely mounted inline fans (TD, PV, SWF) for virtually silent bathroom ventilation. Inline fans give you the option to mount your grille over shower, toilet, tub, or in multiple locations (dual vent).

With S&P's Grille Options the choice is yours!

Vent Lights

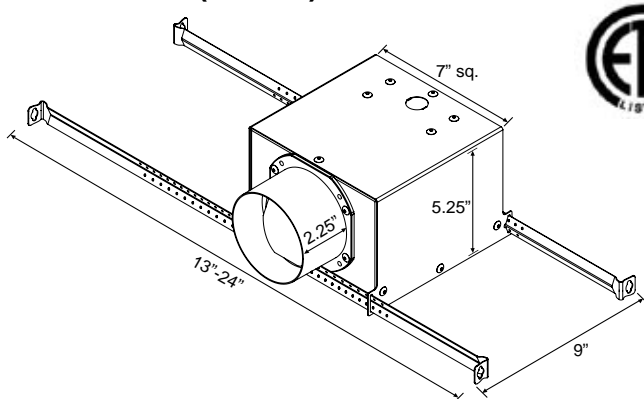
Available with LED Bulbs



S&P's new Vent Lights give you ventilation that is "Out-of-Sight and Out-of-Mind"! The Vent Lights appear to be a regular can light, and when combined with a remotely mounted fan, the noise and unsightly look of the traditional bathroom fan are gone! The Vent Lights are aesthetically pleasing grilles with lights that will match any bathroom decor. These vent lights are designed to be used exclusively with one of S&P's remotely mounted inline fans (TD, PV, SWF) for virtually silent bathroom ventilation. Inline fans give you the option to mount your grille over the shower, toilet, tub, or in multiple locations (dual vent).

Model	Description
VLED-100	Vent Light with PAR30 LED Bulb
VLH-100	Vent Light with PAR30 Halogen Bulb
VLF-100	Vent Light with Energy Star Rated Compact Fluorescent Bulb

Dimensions (inches)



Features:

- Longer duct collar for 4" duct
- Extendable hanger bars up to 24"
- 7.5" grille
- Built-in backdraft damper
- 3 bulb options

Why Choose the Vent Light with LED Bulbs?

S&P's respect for the environment extends to its Vent Lights with the optional LED Bulb. The benefits to the LED Bulbs include:

- Built to last a minimum of 60,000 hours, plus the LED's use a fraction of the energy that a traditional incandescent or halogen lamp uses
- LED's contain no mercury so they are easy to dispose of, unlike other energy efficient bulbs
- The LED lamps run cool and are shock resistant, making them safer for use in your home

Premium Grilles

PG



PGD



S&P's premium grilles come standard with steel collars for easy mounting and installation. They are available with (PGD) and without (PG) backdraft dampers.

Model	Description
PG-100	4" Plastic Grille with 4" Steel Collar
PGD-100	4" Plastic Grille with 4" Steel Collar and Integrated Backdraft Damper
PG-150	6" Plastic Grille with 6" Steel Collar
PGD-150	6" Plastic Grille with 6" Steel Collar and Integrated Backdraft Damper

Grille Dimensions (in inches)



Grille	Dia.	Height	Fits Duct Dia.	Fits Collars
PG-150G	8 1/8	1 5/8	6"	PG-150D or PGD-150DB
PG-100G	4 5/8	1 1/2	4"	PG-100D or PGD-150DB

Collar Dimensions (in inches)



PG Collar



PGD Collar

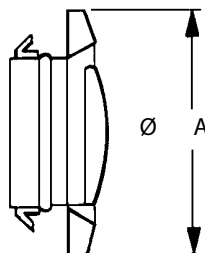
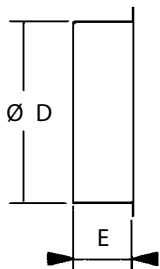
Collar	Diameter	Length
PG-100D	3 3/4	3 1/4
PGD-100DB	3 3/4	4 1/8
PG-150D	5 3/4	4 5/8
PGD-150DB	5 3/4	4 1/8

Adjustable Grilles

BOR/BOC



Exhaust grilles for bathrooms, toilets and other small rooms. All models offer an adjustable central valve to regulate the airflow.



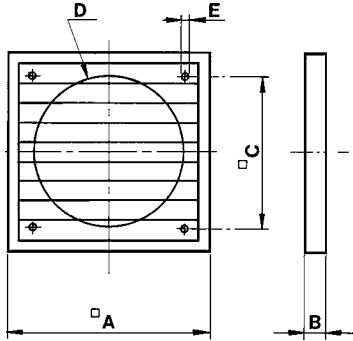
Model	A	D	E	Weight (lbs)
BOR/BOC-100	145	100	50	1
BOR/BOC-125	145	125	50	1
BOR/BOC-150	204	160	50	1
BOR/BOC-200	244	200	50	1

Bathroom Exhaust Accessories

PER-W-Plastic Louvered Shutter



Louvered backdraft shutters manufactured totally from UV stabilized plastic material.

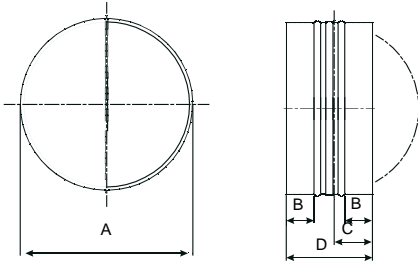


Model	A	B	C	D	E
PER-100W	123	12	90	98	4
PER-125W	158	15	110	130	4
PER-160W	178	20	130	152	4
PER-200W	243	21	184	205	5

CAR-Backdraft Damper

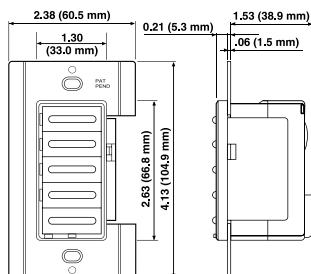


Backdraft dampers are designed with galvanized steel collars and have lightweight aluminum damper blades. They are spring loaded for positive closure.

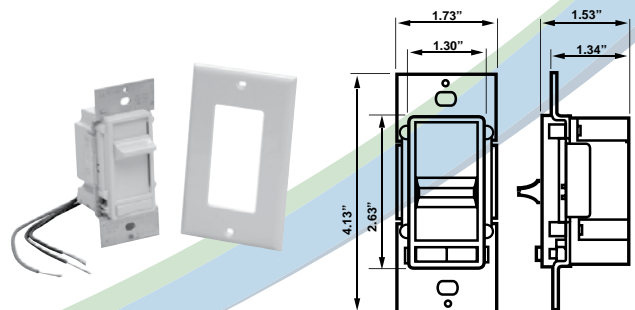


Model	A	B	C	Wgt. (lbs)
CAR-100	100 3 15/16	80 3 2/16	32 1 4/16	1
CAR-125	125 4 15/16	100 3 15/16	42 1 10/16	1
CAR-150	150 5 14/16	120 4 12/16	52 2 1/16	1
CAR-200	160 6 5/16	120 4 12/16	52 2 1/16	1
CAR-250	200 7 14/16	140 5 8/16	62 2 7/16	1
CAR-315	250 9 13/16	140 5 8/16	62 2 7/16	2

EPBT-60-Electronic Push Button Timer (10-20-30-60 min.)



SCS5 - Speed Control Slide Type



Options for Remodeling or Retrofit

Are you sick of your noisy bathroom exhaust fan? Reduce the noise of your existing bath fan (while increasing performance) and replace it with a quiet S&P inline fan and S&P's Convert-a-Kit Bathroom Exhaust Kit or use our SWF-SIDEWALL fan!

CVK-100 - Convert-a-Kit Bathroom Exhaust Kits



The CVK-100 kit includes all of the components that you need to disable your current fan and connect to a new S&P fan. Best of all, you choose which 4" S&P fan is most compatible with your installation!

Features of Convert-a-Kit:

- No ceiling or drywall repairs
- Use existing fan housing and grill
- ENERGY STAR® Qualified (TD models)
- HVI Certified
- UL Listed
- All fans include a five (5) year warranty

The CVK-100 Kit Includes:

- 8 ft. of 4 in. insulated flexible duct
- 4"-3" duct reducer
- 12 ft. 14-2 electrical wire
- Wire nuts
- Cable restraint
- Screws
- 2 nylon tie wraps.

SWF-SIDEWALL Fan



Move the fan motor outside to reduce noise. The SWF fan is designed to mount seamlessly on the outside of your house and allows you to connect to your existing fan housing or grille. The SWF is also perfect when space is an issue or direct venting to the outside is required.

- Same powerful motor found in PV series fans.
- Low profile aesthetic design.
- Fully speed controllable.
- Built-in backdraft damper .
- Extended opening exhaust grille.
- 5 year warranty.
- HVI certified and cULus listed.
- Line includes 4 - 8"
119 - 416 CFM



Bathroom Ventilation - V Ceiling Mount Fans

S&P's V-Series Bathroom Fan by RenewAire is the best choice for exhaust-only ventilation. The V-Series improves indoor air quality and increase's your homes durability by quickly exhausting contaminants and excess moisture that can cause health issues, mold growth and structural damage.



Performance

- The most energy efficient line of ventilation fans available in North America.
- Aerodynamically engineered to move air with lowest power consumption and sound levels.
- Motors operate with the lowest heat build up for long life even when run continuously - 5 year warranty.
- Low air leakage dampers minimize uncontrolled infiltration.
- The lowest carbon footprint of leading residential ventilation brands.

Construction

- Robust steel housing and duct collar
- Heat-sink motor unit
- Internal electrical wiring box
- Attractive, sturdy grille
- Impedance and thermal fuse electrical protection
- UL List for installation in tub/shower enclosures when connected to a GFCI protected branch circuit.

VSWITCH Control



The VSWITCH Control is specifically designed for use with the V-Series fans. This Line Voltage Ventilation Fan Control may be used to comply with ASHRAE 62.2 ventilation rates for residential applications.

Model	CFM	Static Pressure (in W.G.)	Energy Efficiency (CFM/Watts)*	Watts	Sones	Amps
V50	50/31	0.1/0.25	4.5	12.9	<0.3	0.12
V80	80/60	0.1/0.25	5.1	16.1	<0.3	0.15
V110	110/93	0.1/0.25	4.6	24.2	0.8	0.21
V150	150/110	0.1/0.25	4.5	32.7	<0.3	0.29

* Energy Star qualified data based on tested air flow and power consumption.

Model	Duct Dia.	Grille Size (Sq.)	Cabinet Size			Unit Wgt./ Ship Wgt. (lbs)
			W	H	D	
V50	4"	13 x 13	9-7/8	9-7/8	8-1/16	7.7/10.4
V80	4"	13 x 13	9-7/8	9-7/8	8-1/16	7.7/10.4
V110	4"	13 x 13	9-7/8	9-7/8	8-1/16	7.7/10.4
V150	6"	13-5/8 x 13-5/8	12-1/16	12-1/16	9-9/16	12.3/16.2





Soler & Palau USA
6393 Powers Ave.
Jacksonville, FL 32217
800.961.7370
800.961.7379
www.solerpalau-usa.com

Soler & Palau Canada
5600 Ambler Drive
Mississauga, ON L4W 2K9
866.733.0233
866.358.5346
www.solerpalaucanada.com