

# AirScape®

# 1.7 WHF

1712 CFM

159 Watts

✓  
strong & lightweight  
aluminum casing

✓  
low-profile,  
compact design

✓  
4 efficient  
2-speed fans

✓  
high-flow, low-noise  
cube-core grille

✓  
motorized,  
insulated doors

## A Simple, Natural Solution to Your Cooling Needs

### ***Quiet***

The 1.7 WHF has been engineered using noise reduction strategies for maximum acoustic attenuation. Its 4 high-quality precision fans operate smoothly and quietly.

### ***Efficient***

The AirScape® 1.7 WHF can cool your home using as little as 1/10th the electricity of traditional air conditioning, reducing your energy costs and environmental footprint.

### ***Insulated***

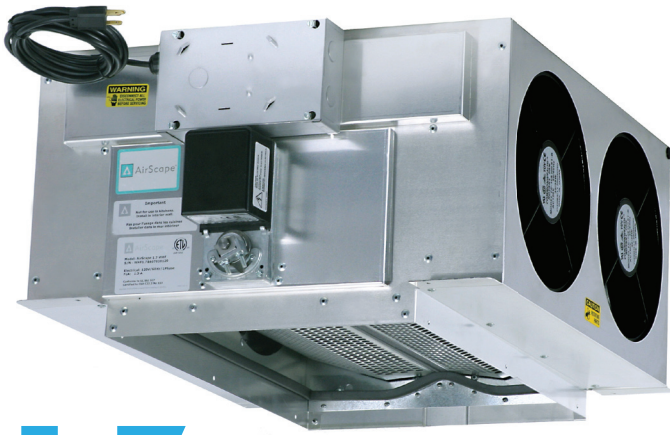
Opening and closing automatically, motorized, insulated damper doors create an airtight seal and thermal barrier between the living space and attic whenever the fan is not running.

### ***Easily Installed***

This compact, self-contained unit mounts quickly and easily to 16" or 24" on-center framing in the ceiling or wall and requires only about 18" of vertical clearance.

[www.airscapefans.com](http://www.airscapefans.com)

866.448.4187



# 1.7 WHF

Airflow (CFM)	1712/1000 high/low
Power (Watts)	159/105 high/low
Efficiency (CFM/watt)	10.8/9.5 high/low
Insulation	R-47
Noise (dBA @1M @45°)	55/44 high/low
Electric	120VAC 2.0A
Rough Opening	14.5" x 22.5"
Grille Size	16.5" x 24.5"
Attic Venting	4.0 SQFT
Shipping Weight	56 lbs
Warranty	3 years

*\*Due to our continual product improvement efforts, performance ratings and specifications are subject to change without notice.*

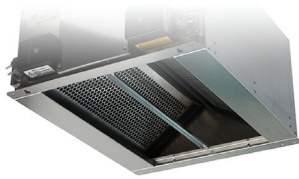
## Outstanding energy-efficiency



Using roughly 1/10th the electricity of A/C, an Airscape® whole house fan can slash your energy bills while providing fresh, natural cooling. Many customers find their investment pays for itself much more quickly than imagined. Say goodbye to A/C and say hello to the green cooling alternative!

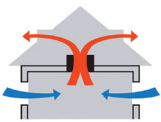
## Automatic damper doors

Heavy-duty actuators close the 1.7's insulated damper doors tightly against a rubber gasket when the fan is off, providing a thermal barrier and airtight seal between the living space and attic. This means no attic air enters the living space, and no warm air leaks into and condenses in the attic.



## Captures the evening breeze

Engineered to minimize both noise and electricity consumption, AirScope whole house fans can be run through the night without disturbing your sleep, or your wallet! This allows you to take advantage of low nighttime temperatures to achieve the maximum cooling effect.



## Digital Touch Controls

Every AirScope whole house fan includes our industry-leading Digital Touch Controls, which feature an attractive, easy to use LED touchpad, a built-in 12-hour timer, extreme reliability, and a wide range of accessories.



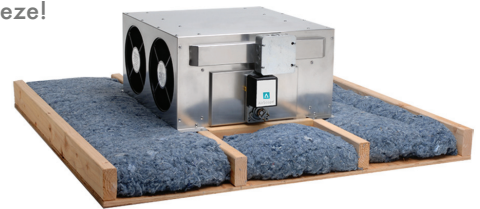
## Robust construction = maintenance free operation

Proudly manufactured in the USA with metal construction, industrial-grade components, and digital electronics, AirScope whole house fans offer reliable, worry-free operation season after season. Every unit is backed by a 3-year warranty with exceptional technical support.



## Easy installation & retrofit

Designed for 16" or 24" on-center ceiling joists or wall studs and equipped with an factory-installed 10' power cord, the AirScope 1.7 can be easily installed in new or existing construction, and in attics with very little clearance. Low-voltage, "Plug and Play" controls make wiring a breeze!



**CALCULATORS** Determine your needs:  
[airscapefans.com/system-builder/whf-sizer.php](http://airscapefans.com/system-builder/whf-sizer.php)

**UTILITY REBATES** Find a rebate from your provider:  
[airscapefans.com/rebates](http://airscapefans.com/rebates)

Simple, straightforward installation for the confident do-it-yourselfer.

- OR -

For a list of experienced installers in your area, go to:

[airscapefans.com/proinstallers](http://airscapefans.com/proinstallers)