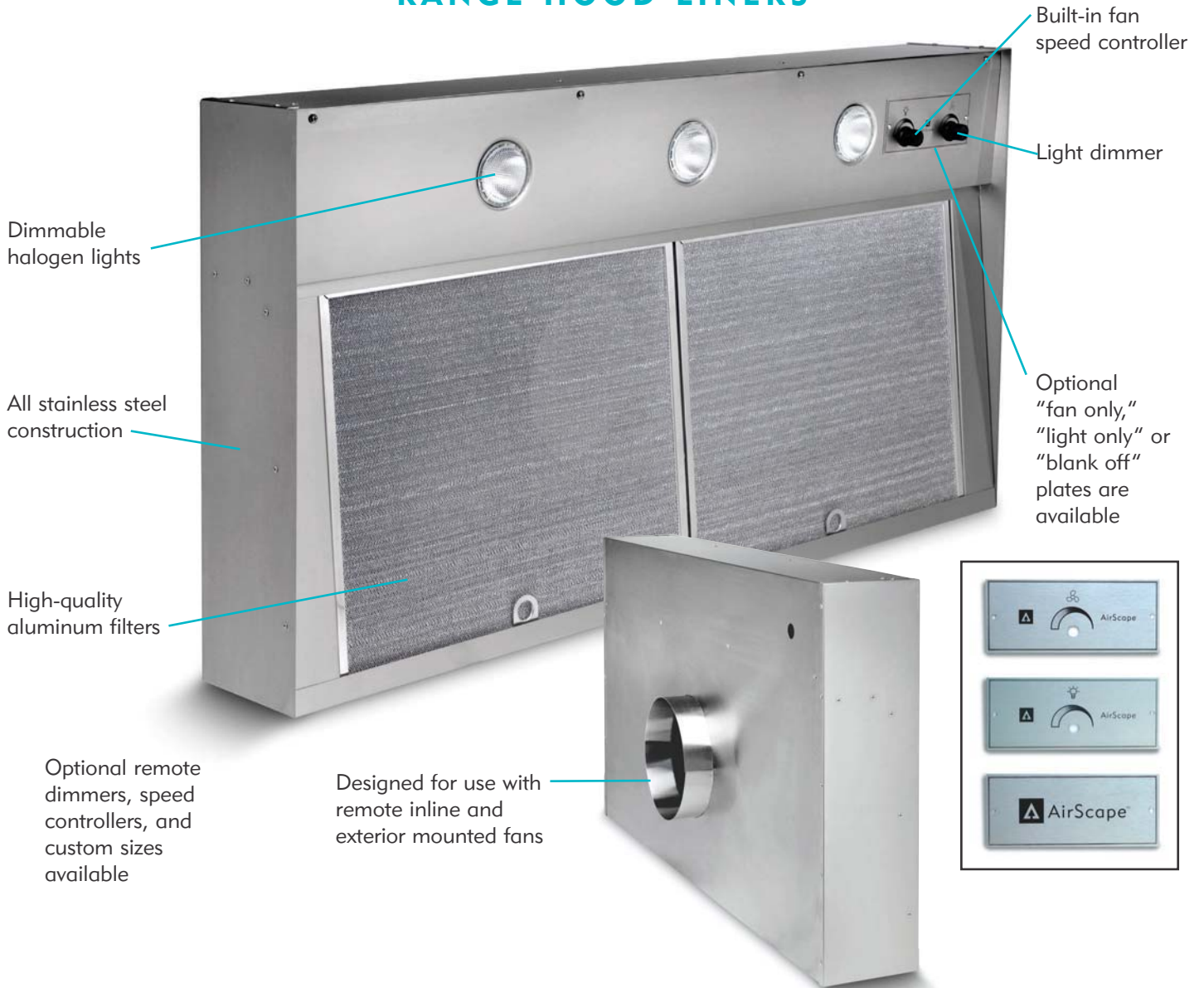




# AirScape™

## RANGE HOOD LINERS



Dimmable halogen lights

All stainless steel construction

High-quality aluminum filters

Optional remote dimmers, speed controllers, and custom sizes available

Designed for use with remote inline and exterior mounted fans

Built-in fan speed controller

Light dimmer

Optional "fan only," "light only" or "blank off" plates are available

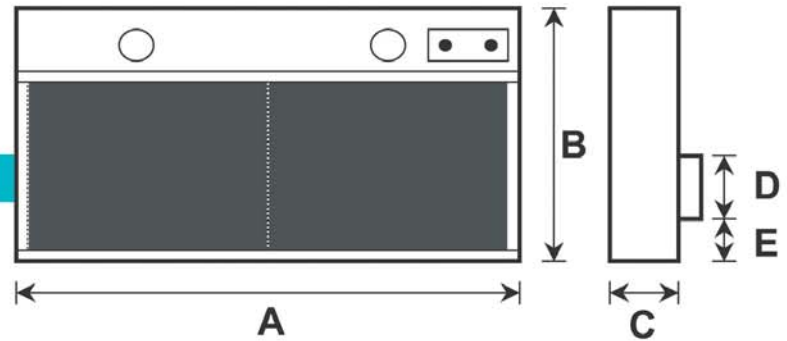


### AFFORDABLE, AND BUILT TO LAST

AirScape range hood liners are designed to give you years of worry-free service, and yet they're priced below comparable products. Available in standard sizes, as well as custom sizes, they can be surrounded with cabinetry or custom enclosures and combined with remote inline fans and silencers for an elegant, quiet and powerful system.

## STANDARD SIZES

Standard AirScape range hood liner sizes are listed below. Please call us with any questions regarding sizing or application.



Model	Lights	Filters (Size)	A	B	C	D (duct)	E
AHL-30	2	2 (12"x15")	28-1/2"	22"	6"	8"	4-5/8"
AHL-36	2	2 (15"x15")	34-1/2"	22"	6"	8"	4-5/8"
AHL-42	3	2 (15"x18")	40-1/2"	22"	6"	10"	4-5/8"
AHL-48	3	3 (15"x14")	46-1/2"	22"	6"	12"	3-5/8"

## COMPLETE FAN EXHAUST PACKAGES

Get a pre-engineered kitchen ventilation system and save money too. Pair with the hood liner of your choice to complete the package. We've put these discounted fan packages together based on our years of experience, so you know they'll work right.

### VALUEPKG-K6A

483 nominal CFM kit typically used with the AHL-30 (with reducer)

- Fantech 6" FG 6XL inline fan. Quantity of 1
- Fantech LD 6 round silencer. Quantity of 1
- Fantech RSK 6 backdraft damper. Quantity of 1
- Fantech FC 6 mounting clamps. Quantity of 2
- 6 inch galvanized steel roof cap. Quantity of 1\*



### VALUEPKG-K8A

502 nominal CFM kit typically used with the AHL-30 or AHL-36

- Fantech 8" FG 8XL inline fan. Quantity of 1
- Fantech LD 8 round silencer. Quantity of 1
- Fantech RSK 8 backdraft damper. Quantity of 1
- Fantech FC 8 mounting clamps. Quantity of 2
- 8 inch galvanized steel roof cap. Quantity of 1\*



### VALUEPKG-K8B

836 nominal CFM kit typically used with the AHL-36

- Fantech 8" FKD 8XL inline fan. Quantity of 1
- Fantech LD 8 round silencer. Quantity of 1
- Fantech RSK 8 backdraft damper. Quantity of 1
- Fantech FC 8 mounting clamps. Quantity of 2
- 8 inch galvanized steel roof cap. Quantity of 1\*



### VALUEPKG-K10A

589 nominal CFM kit typically used with the AHL-42

- Fantech 10" FG 10XL inline fan. Quantity of 1
- Fantech LD 10 round silencer. Quantity of 1
- Fantech RSK 10 backdraft damper. Quantity of 1
- Fantech FC 10 mounting clamps. Quantity of 2
- 10 inch galvanized steel roof cap. Quantity of 1\*



### VALUEPKG-K10B

910 nominal CFM kit typically used with the AHL-42

- Fantech 10" FKD 10 inline fan. Quantity of 1
- Fantech LD 10 round silencer. Quantity of 1
- Fantech RSK 10 backdraft damper. Quantity of 1
- Fantech FC 10 mounting clamps. Quantity of 2
- 10 inch galvanized steel roof cap. Quantity of 1\*



### VALUEPKG-K10C

1,266 nominal CFM kit typically used with the AHL-48 (with reducer)

- Fantech 10" FKD 10XL inline fan. Quantity of 1
- Fantech LD 10 round silencer. Quantity of 1
- Fantech RSK 10 backdraft damper. Quantity of 1
- Fantech FC 10 mounting clamps. Quantity of 2
- 10 inch galvanized steel roof cap. Quantity of 1\*



\*can be substituted with wall cap

Available at



**(877) 711-4822**

**www.hvacquick.com**

We welcome your questions.  
Call or visit us today.

