



EXHAUSTO

Proven Draft Switch PDS

Description

The PDS is an adjustable differential pressure switch for proven fan operation.

It is suitable for switching a circuit on, off or over on changes in actual pressure value relative to the set reference value. The reference value (switching point) is adjusted on a setting wheel provided with a scale.

Pressure setting range is .08"W.C.-.60"W.C.



Application

Differential pressure monitoring in firing and ventilation systems.

Suitable for air, flue and exhaust gases.

Material

The housing and switch are made of polycarbonate.

The diaphragm is made of NBR, while the switching contact is made of fine silver.

Approvals

CE type test approval as per CE Gas Appliance

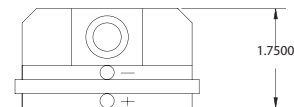
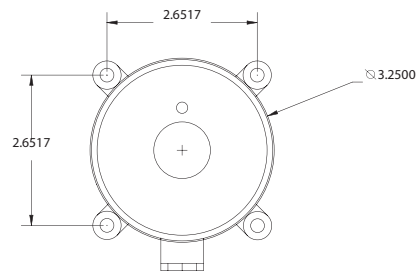
Directive: LGW C2 CE-0085 AQ 0693

Warranty

2 year factory warranty.

Specifications

Maximum Load	5 Amps @ 120-240 V AC
Range of Operation	.08-.60"W.C.
Temperature Limits	-5°F-185°F
Max. Operating Pressure	2"W.C.
Conduit Connection	1/4" compression fitting
Wiring Connections	At screw terminals via PG* 11 cable gland (* heavy-gauge conduit thread)
Weight	6.5 oz.



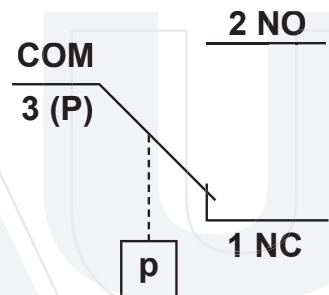
Functional Description

Differential pressure switch in pressure and vacuum ranges. The differential pressure acts via diaphragm against the force of setting spring on the microswitch. The pressure switch operates without any auxiliary power.

PDS Switching Function

As pressure rises:
1 NC opens, 2 NO closes

As pressure falls:
1 NC closes, 2 NO opens



Specifications are subject to change without notice.