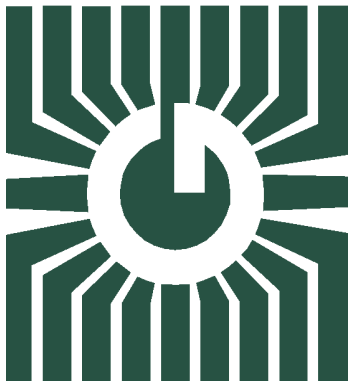
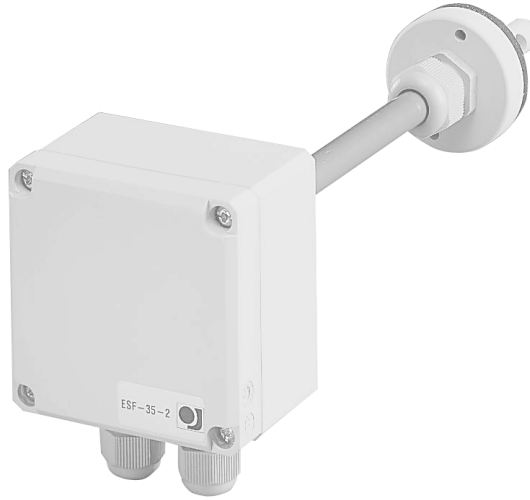


# GREYSTONE

ACCURACY BY DESIGN



## AIR FLOW TRANSDUCER ESF-35-2



**ESF is an air flow transducer with a broad application area. It can be used for control, surveillance, and regulation of the flow rate in fresh-air and ventilation systems, etc.**

### FEATURES:

- Converts airspeed into a 4 – 20mA or a 0 – 10 VDC signal
- Linear output signal
- Made with corrosion resistant material
- Fully electronic registration of airflow speed
- AC or DC voltage supply
- Compensates for changes of air temperature
- Telescopic sensor facilitates installation
- Temperature output signal 0 – 10 VDC
- Fuse protected

***Peace of mind  
through reliable  
air velocity monitoring***

GREYSTONE HAS AN **ISO 9001** REGISTERED QUALITY SYSTEM

## APPLICATION:

The ESF-35-2 airflow transducer can be used in a wide range of applications such as:

- Measurements of airflow speed via PLC/outstation/EMS
- Regulation of airflow speed
- Monitoring of airflow speed

## FUNCTION:

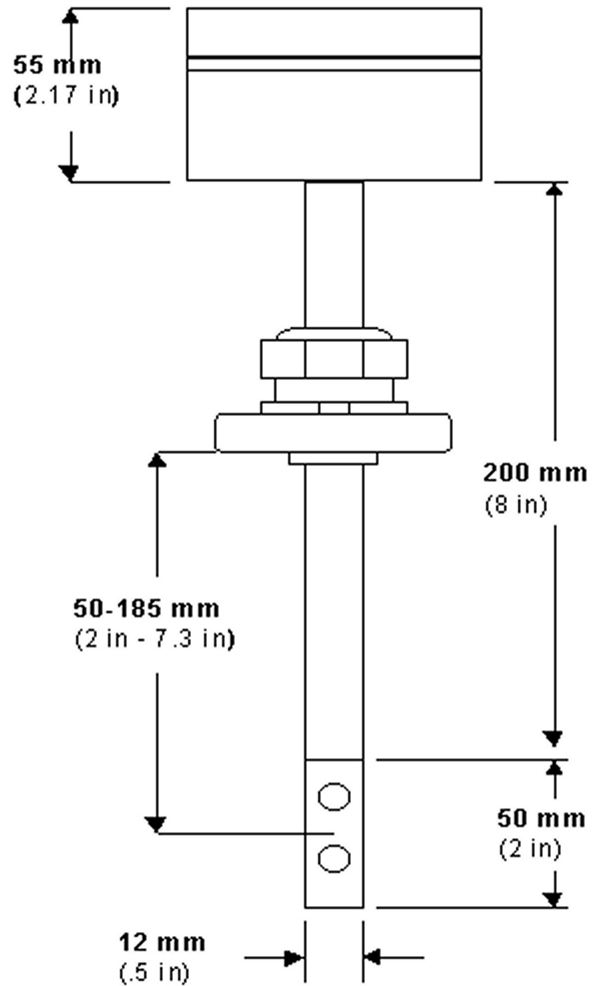
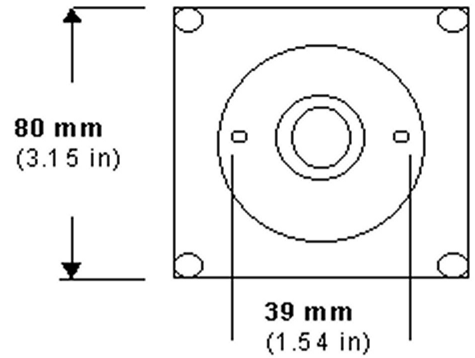
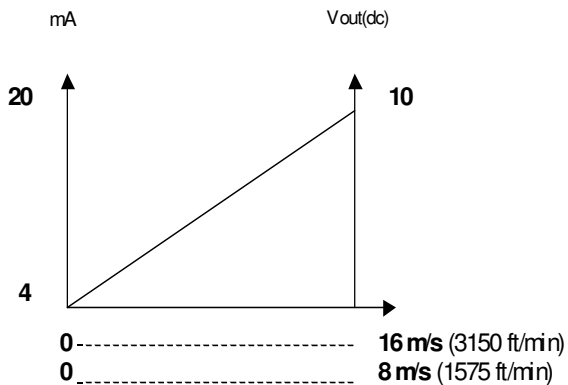
The ESF-35-2 transducer registers the airflow speed according to a thermal principle based on the fact that the cooling action of air increases with airspeed. The action is measured and converted to a 4 – 20 mA or a 0 – 10 V signal corresponding to airflow speeds from 0 – 8 m/s (0 – 1575 ft/min) or 0 – 16 m/s (0 – 3150 ft/min).

## TECHNICAL DATA:

Airflow speed .....	0 – 16 m/s (3150 ft/min), (jumper selectable)            0 – 8 m/s (1575 ft/min)
Output signal (flow) .....	4 – 20 mA, 0 – 10 VDC
Output signal (temperature) .....	0 – 10 VDC
Temperature range .....	0 – 50°C (32°F – 122°F)
Air temperature .....	-10°C – 60°C (14°F – 140°F)
Ambient temperature .....	-20°C – 50°C (-4°F – 122°F)
AC voltage supply .....	24 VAC (120mA)
DC voltage supply .....	16 – 30 VDC (80mA)
Absolute accuracy .....	±5%
Rise time .....	20 sec
Time constant .....	5 sec
Depth of insertion in channel .....	50 – 185 mm (2 – 7 in.)
Dimensions (H x W x D) .....	80 x 80 x 55 mm (3.15 x 3.15 x 2.17 in.)

## INSTALLATION:

The airflow transducer ESF-35-2 is installed in such a way that the current of air passes through the gap of the sensor head. Conductors to and from the transducer should be kept isolated from high-power conductors where powerful transient voltage spikes may appear.



Greystone Energy Systems Inc., established in 1983, is Canada's largest manufacturer of HVAC sensors and transducers for Building Automation Management Systems.

We have conscientiously established a worldwide reputation as an industry leader by maintaining leading-edge design technology, prompt technical support, and a commitment to on-time deliveries. We take pride in our Quality Management System which is ISO 9001 certified, assuring our customers of consistent product reliability.

V.10/08