



# MODEL HREBC HOODED BELT DRIVE PROPELLER ROOF EXHAUSTER



## APPLICATION

Models HREBC are used to exhaust air from a variety of commercial and industrial operations such as manufacturing and assembly plants, warehouses, garages, laundries and similar buildings.

The unit's low silhouette fits today's clean uncluttered building design and its standard all-galvanized construction provides years of resistance to corrosion.

Hood sizes 58 to 78 inch (represents fan sizes 24 to 36) ship assembled. Hood sizes 87 to 111 inch (represents fans sizes 42 to 60) ship knockdown and are designed for easy job-site assembly.

For damper maintenance, an entire side panel of the fan stack easily removes for access. The hood hinges open for access to motor, drive and bearings.

## CONSTRUCTION

### Panel Assembly

- Heavy-gauge G90 galvanized steel panel.
- All welded support structure of minimum schedule 40 galvanized pipe.
- Motor/bearing plates of minimum 10 gauge galvanized steel.

### Hood

- All heavy-gauge G90 galvanized steel.
- Low silhouette modular design for pleasing appearance.
- Gutter provides additional hood strength and rigidity.
- Hinged for maintenance access.

### Base

- All galvanized construction for corrosion resistance.
- Removable panel for damper access.

### Propeller

- Three, four or six wing air-foil aluminum blades.
- Steel hub plate with steel taper lock bushing.

## Drives

- Sized for minimum 150% of drive horsepower.
- Single belt adjustable pitch sheaves through 3HP.
- Two belt fixed pitch sheaves 5HP through 10HP.
- Non static v-belts.

## Bearings

- Bearings designed for minimum 200,000 hour life.
- Bearings are sealed, pre-lubricated with relube fittings.

## Motors

- Open drip-proof construction is standard.

## AMCA SEAL



Soler & Palau USA, certifies that the Models HREBC shown herein are licensed to bear the AMCA Seal. The ratings shown are based on test and procedures performed in accordance with AMCA Publication 211 and AMCA Publication 311 and comply with the requirement of the AMCA Certified Ratings Program.

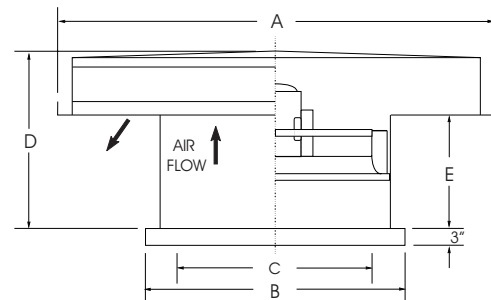


LISTED POWER ROOF VENTILATOR  
UL STANDARD 705

PROPELLER ROOF VENTILATORS

## DIMENSIONAL DATA

MODEL HREB	A	B	C	D	E	Average Ship Wt. Lbs.
24	58	35	24	44	23	300
30	66	41	30	44	23	360
36	78	47	36	44	23	440
42	87	53	42	51	30	540
48	99	59	48	51	30	690
54	111	65	54	51	30	820
60	111	71	60	51	30	910



C=RECOMMENDED ROOF OPENING

MODEL HREB	RECOMMENDED 12" HIGH MOUNTING CURB		RECOMMENDED GRAVITY DAMPER	
	OD	STOCK NO.	OD	STOCK NO.
24	33 1/4	2302.12.24HR	26	S3GA26
30	39 1/4	2302.12.30HR	32	S3GA32
36	45 1/4	2302.12.36HR	38	S3GA38
42	51 1/4	2302.12.42HR	44	S3GA44
48	57 1/4	2302.12.48HR	50	S3GA50
54	63 1/4	2302.12.54HR	56	S3GA56
60	69 1/4	2302.12.60HR	62	S3GA62

ALL DIMENSIONS IN INCHES, WEIGHTS IN POUNDS. OD IS OUTSIDE DIMENSION OF SQUARE CURB AND DAMPER. DUE TO CONTINUING RESEARCH, SOLER & PALAU RESERVES THE RIGHT TO CHANGE SPECIFICATIONS WITHOUT NOTICE.

<b>MODEL HREBC</b>						<b>Hooded Belt Drive Propeller Roof Exhauster</b>						Ventilator with Open Dripproof Motor and Drive Assem-bly	
MODEL HREBC	MOTOR Hp	MAX BHp	RPM	SONES @ 0 SP	BLADES/ PICTCH	CFM at Static Pressure						115/1/60*	208-230/460/3/60
						0	1/8	1/4	3/8	1/2	3/4	STOCK NO.	STOCK NO.
24	1/3	0.42	970	14.9	3/25	5702	4678	3661	2480	1159	-	HREBC24PH1S	HREBC24PH3S
	1/2	0.62	1110	18.3	3/25	6525	5613	4764	3792	2730	-	HREBC24QH1S	HREBC24QH3S
	3/4	0.90	1270	23.0	3/25	7466	6653	5915	5153	4271	2240	HREBC24RH1S	HREBC24RH3S
	1	1.20	1400	26.0	3/25	8230	7482	6806	6134	5417	3809	HREBC24SH1S	HREBC24SH3S
	1 1/2	1.74	1585	32.0	3/25	9318	8647	8038	7450	6850	5501	HREBC24TH1S	HREBC24TH3S
	2	2.39	1760	38.0	3/25	10347	9735	9176	8641	8113	7003	HREBC24VH1S	HREBC24VH3S
30	1/3	0.40	680	13.2	3/27	7209	5018	3176	-	-	-	HREBC30PH1S	HREBC30PH3S
	1/2	0.61	780	16.3	3/27	8269	6517	4594	3076	-	-	HREBC30QH1S	HREBC30QH3S
	3/4	0.91	890	20.0	3/27	9435	7802	6092	4715	3378	-	HREBC30RH1S	HREBC30RH3S
	1	1.12	980	24.0	3/27	10389	8811	7407	5963	4761	-	HREBC30SH1S	HREBC30SH3S
	1 1/2	1.81	1120	29.0	3/27	11874	10351	9420	7876	6728	4619	HREBC30TH1S	HREBC30TH3S
	2	2.42	1235	34.0	3/27	13093	11601	10764	9647	8292	6332	HREBC30VH1S	HREBC30VH3S
36	3	3.64	1415	44.0	3/27	15001	13542	12783	12052	10959	8829	N/A	HREBC30WH3S
	1/3	0.39	580	13.3	3/22	8786	6104	2134	-	-	-	HREBC36PH1S	HREBC36PH1S
	1/2	0.59	665	16.5	3/22	10073	7683	5107	-	-	-	HREBC36QH1S	HREBC36QH3S
	3/4	0.90	765	20.0	3/22	11588	9473	7492	4732	-	-	HREBC36RH1S	HREBC36RH3S
	1	1.20	840	23.0	3/22	12724	10811	9014	6896	3781	-	HREBC36SH1S	HREBC36SH3S
	1 1/2	1.79	960	29.0	3/22	14542	12808	11215	9677	7717	-	HREBC36TH1S	HREBC36TH3S
	2	2.37	1055	33.0	3/22	15981	14338	12909	11537	9985	5673	HREBC36VH1S	HREBC36VH3S
42	3	3.58	1210	42.0	3/22	18329	16799	15675	14345	12167	10286	N/A	HREBC36WH3S
	5	5.97	1435	55.0	3/22	21737	20331	19363	18375	17234	15229	N/A	HREBC36XH3S
	1/2	0.60	500	14.9	3/26.5	12466	8498	3210	-	-	-	HREBC42QH1S	HREBC42QH3S
	3/4	0.89	570	18.1	3/26.5	14211	10756	7172	-	-	-	HREBC42RH1S	HREBC42RH3S
	1	1.20	630	21.0	3/26.5	15707	12613	9405	5533	-	-	HREBC42SH1S	HREBC42SH3S
	1 1/2	1.79	720	26.0	3/26.5	17951	15283	12444	9640	5864	-	HREBC42TH1S	HREBC42TH3S
	2	2.41	795	30.0	3/26.5	19821	17431	14861	12333	9694	-	HREBC42VH1S	HREBC42VH3S
48	3	3.62	910	37.0	3/26.5	22688	20627	18414	16163	13965	8937	N/A	HREBC42WH3S
	5	6.05	1080	49.0	3/26.5	26927	25212	23392	21505	19606	15894	N/A	HREBC42XH3S
	3/4	0.91	450	16.3	6/20	15781	12968	9524	-	-	-	HREBC48RH1S	HREBC48RH3S
	1	1.20	495	18.9	6/20	17360	14879	11860	8269	-	-	HREBC48SH1S	HREBC48SH3S
	1 1/2	1.76	565	23.0	6/20	19814	17669	15126	12415	9098	-	HREBC48TH1S	HREBC48TH3S
	2	2.43	625	27.0	6/20	21919	19977	17838	15433	12834	-	HREBC48VH1S	HREBC48VH3S
	3	3.59	715	32.0	6/20	25075	23364	21654	19566	17502	12688	N/A	HREBC48WH3S
54	5	6.10	850	43.0	6/20	29809	28351	26957	25466	23707	20177	N/A	HREBC48XH3S
	7 1/2	8.94	965	53.0	6/20	33842	32546	31316	30072	28720	25584	N/A	HREBC48YH3S
	2	2.36	530	28.0	6/20	28075	24746	21152	17397	13225	-	HREBC54VH1S	HREBC54VH3S
	3	3.59	610	34.0	6/20	32312	29421	27975	23156	19939	-	N/A	HREBC54WH3S
60	5	5.79	715	44.0	6/20	37874	35407	32940	30341	27494	21912	N/A	HREBC54XH3S
	7 1/2	8.57	815	55.0	6/20	43171	41007	38843	36670	34336	29337	N/A	HREBC54YH3S
	2	2.30	450	26.0	6/20	28479	23920	19370	13910	-	-	HREBC60VH1S	HREBC60VH3S
60	3	3.68	525	33.0	6/20	23225	29133	25508	21380	16669	-	N/A	HREBC60WH3S
	5	5.62	605	41.0	6/20	38288	34526	31547	28228	24595	15845	N/A	HREBC60XH3S
	7 1/2	8.71	700	53.0	6/20	44301	40836	38290	35595	32709	26232	N/A	HREBC60YH3S

**PROPELLER ROOF VENTILATORS**

**\*Tri-voltage (115-208-230) is standard on 3/4 through 1 1/2 Hp Single phase motors. Tri-voltage is available for the 1/2 Hp motors. Inquire for price and delivery.**

Power Ratings (BHP) do not include transmission losses.

Performance certified is for installation type A-free inlet, free outlet. Performance ratings include the effects of appurtenances (accessories).

The sound ratings shown are loudness values in fan sones @ 5' (1.5m) in a hemispherical free field calculated per AMCA Standard 301.

Values shown are for installation Type A-Free inlet fan sone levels.

575/3/60 ODP Motors are available for most motor HP's - Refer to Price List.



# MODEL HRSB HOODED BELT DRIVE PROPELLER ROOF SUPPLY FAN



## APPLICATION

Models HRSB are used in a variety of commercial and industrial operations such as warehouses, manufacturing plants, equipment and machinery rooms, assembly plants and similar facilities to provide fresh outside air for personal comfort and to reduce negative pressure caused by exhaust systems.

Hood sizes 58 to 78 inch (represents fan sizes 24 to 36 inch) ship assembled. Hood sizes 87 to 111 inch (represent fans sizes 42 to 60 inch) ship separate for field attachment.

## CONSTRUCTION

### Panel Assembly

- Heavy-gauge G90 galvanized steel panel.
- All welded support structure of minimum schedule 40 galvanized pipe.
- Motor/bearing plates of minimum 10 gauge galvanized steel.

### Hood

- All heavy-gauge G90 galvanized steel.
- Low silhouette modular design for pleasing appearance.
- Unique design rain gutter minimizes water entrapment.
- Gutter provides additional hood strength and rigidity.
- Hinged for maintenance access.

### Base

- All galvanized construction for corrosion resistance.
- Removable panel for damper access.

### Propeller

- Three, four or six wing air-foil aluminum blades.
- Steel hub plate with steel taper lock bushing.

### Bearings

- Bearings designed for minimum 200,000 hour life.
- Bearings are sealed, pre-lubricated with relube fittings.

## DIMENSIONAL DATA

MODEL HRSB	A	B	C	D	E	Average Ship Wt. Lbs.
24	58	35	27	31	23	425
30	66	41	33	32	23	545
36	78	47	36	34	23	690
42	87	53	42	43	30	620
48	99	59	48	44	30	760
54	111	65	54	45	30	1150
60	111	71	60	46	30	1335

C=RECOMMENDED ROOF OPENING

MODEL HRSB	RECOMMENDED 12" HIGH MOUNTING CURB		RECOMMENDED GRAVITY DAMPER	
	OD	STOCK NO.	OD	STOCK NO.
24	33 1/4	2302.12.24HR	26	S3GA26CB
30	39 1/4	2302.12.30HR	32	S3GA32CB
36	45 1/4	2302.12.36HR	38	S3GA38CB
42	51 1/4	2302.12.42HR	44	S3GA44CB
48	57 1/4	2302.12.48HR	50	S3GA50CB
54	63 1/4	2302.12.54HR	56	S3GA56CB
60	69 1/4	2302.12.60HR	62	S3GA62CB

ALL DIMENSIONS IN INCHES, WEIGHTS IN POUNDS. OD IS OUTSIDE DIMENSION OF SQUARE CURB AND DAMPER. DUE TO CONTINUING RESEARCH, SOLER & PALAU RESERVES THE RIGHT TO CHANGE SPECIFICATIONS WITHOUT NOTICE.

## Drives

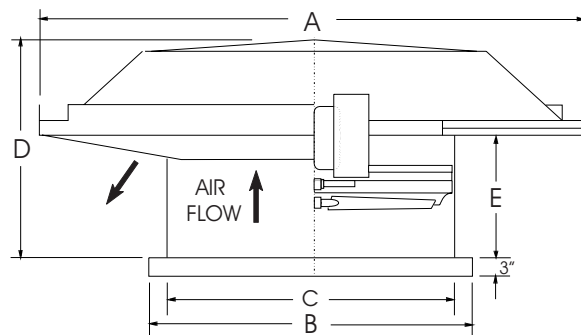
- Sized for minimum 150% of drive horsepower.
- Single belt adjustable pitch sheaves through 3HP.
- Two belt fixed pitch sheaves through 10HP.
- Non static v-belts.

## Motors

- Open drip-proof construction is standard.



LISTED POWER ROOF VENTILATOR  
UL STANDARD 705



# MODEL HRSB

## Hooded Belt Drive Propeller Roof Supply Fan

Ventilator with Open Drip-proof  
Motor and Drive Assembly

MODEL HRSB	MOTOR Hp	MAX BHp	RPM	SONES @ 0 SP	NO. OF BLADES	CFM at Static Pressure						115/1/60*	208-230/460/3/60
						0	1/8	1/4	3/8	1/2	3/4	STOCK NO.	STOCK NO.
24	1/3	0.38	930	15	3	4724	4043	2979	-	-	-	HRSB24PH1S	HRSB24PH3S
	1/2	0.58	1060	19	3	5444	4844	4022	3000	-	-	HRSB24QH1S	HRSB24QH3S
	3/4	0.85	1215	24	3	6171	5648	5049	4244	3315	-	HRSB24RH1S	HRSB24RH3S
	1	1.13	1335	28	3	6781	6302	5841	5121	4374	-	HRSB24SH1S	HRSB24SH3S
	1 1/2	1.70	1530	34	3	7771	7354	6946	6467	5830	4436	HRSB24TH1S	HRSB24TH3S
	2	2.25	1680	41	3	8533	8153	7777	7412	6881	5715	HRSB24VH1S	HRSB24VH3S
30	1/3	0.37	660	13	3	7099	5557	3085	-	-	-	HRSB30PH1S	HRSB30PH3S
	1/2	0.58	775	16	3	8194	6922	5008	-	-	-	HRSB30QH1S	HRSB30QH3S
	3/4	0.85	865	21	3	9304	8246	6822	4979	-	-	HRSB30RH1S	HRSB30RH3S
	1	1.15	950	24	3	10310	9369	8175	6585	-	-	HRSB30SH1S	HRSB30SH3S
	1 1/2	1.70	1090	30	3	11724	10915	9991	8841	7402	-	HRSB30TH1S	HRSB30TH3S
	2	2.27	1200	36	3	12908	12173	11373	10448	9266	-	HRSB30VH1S	HRSB30VH3S
	3	3.44	1370	45	3	14669	13780	12876	11851	10820	8804	N/A	HRSB30WH3S
36	1/3	0.38	495	11	3	9903	6558	-	-	-	-	HRSB36PH1S	HRSB36PH3S
	1/2	0.58	565	14	3	11381	8600	-	-	-	-	HRSB36QH1S	HRSB36QH3S
	3/4	0.85	645	18	3	12993	10696	7433	-	-	-	HRSB36RH1S	HRSB36RH3S
	1	1.14	710	21	3	14302	12333	9637	-	-	-	HRSB36SH1S	HRSB36SH3S
	1 1/2	1.73	815	27	3	16417	14783	12589	10000	-	-	HRSB36TH1S	HRSB36TH3S
	2	2.29	895	31	3	18029	16541	14686	12604	-	-	HRSB36VH1S	HRSB36VH3S
	3	3.44	1025	39	3	20647	19348	17959	16131	14300	-	N/A	HRSB36WH3S
42	1/2	0.58	445	13	3	14503	9169	-	-	-	-	HRSB42QH1S	HRSB42QH3S
	3/4	0.85	510	16	3	16525	12079	-	-	-	-	HRSB42RH1S	HRSB42RH3S
	1	1.15	560	19	3	18251	14350	-	-	-	-	HRSB42SH1S	HRSB42SH3S
	1 1/2	1.72	640	24	3	20858	17815	13510	-	-	-	HRSB42TH1S	HRSB42TH3S
	2	2.30	705	35	3	22977	20268	16414	12245	-	-	HRSB42VH1S	HRSB42VH3S
	3	3.43	805	46	3	26236	23863	20873	17540	13601	-	N/A	HRSB42WH3S
48	3/4	0.86	405	14	3	19542	11487	-	-	-	-	N/A	N/A
	1	1.14	445	17	3	21742	14137	-	-	-	-	HRSB48SH1S	HRSB48SH3S
	1 1/2	1.72	500	21	3	24493	17864	10164	-	-	-	HRSB48TH1S	HRSB48TH3S
	2	2.30	560	25	3	27161	22026	15327	-	-	-	HRSB48VH1S	HRSB48VH3S
	3	3.40	640	30	3	30881	26694	20675	15035	-	-	N/A	HRSB48WH3S
54	2	2.09	465	23	3	29628	23717	14745	-	-	-	HRSB54VH1S	HRSB54VH3S
	3	3.10	530	28	3	33769	29093	22202	-	-	-	N/A	HRSB54WH3S
	5	4.99	630	37	3	39709	35990	31085	25359	-	-	N/A	HRSB54XH3S
	7 1/2	7.47	720	47	3	45382	42128	38469	33640	28551	-	N/A	HRSB54YH3S
60	2	2.02	390	20	3	30739	25920	-	-	-	-	HRSB60VH1S	HRSB60VH3S
	3	3.05	450	26	3	35284	31586	23994	-	-	-	N/A	HRSB60WH3S
	5	4.99	530	35	3	41557	38758	34372	-	-	-	N/A	HRSB60XH3S
	7 1/2	7.59	610	44	3	47830	45398	42206	37327	39300	-	N/A	HRSB60YH3S

\*Tri-voltage (115-208-230) is standard on 3/4 through 1 1/2 Hp Single phase motors. Tri-voltage is available for the 1/2 Hp motors. Inquire for price and delivery.

Power ratings (BHP) do not include transmission losses.

Performance certified is for installation type A-free inlet, free outlet. Performance ratings include the effects of appurtenances (accessories).

The sound ratings shown are loudness values in fan sones @ 5' (1.5m) in a hemispherical free field calculated per AMCA Standard 301.

Values shown are for installation Type A-Free inlet fan sone levels.

575/3/60 ODP Motors are available for most motor HP's - Refer to Price List.

PROPELLER ROOF VENTILATORS



# MODEL UBS UPBLAST BELT DRIVE PROPELLER ROOF EXHAUSTER

Need to determine what data to use



Need Bache Unit Photo Part Numbers and Lead times etc.

## APPLICATION

Models UBB are general ventilation units designed to economically remove large volumes of air, fumes and vapors from commercial and industrial buildings such as warehouses, manufacturing and assembly plants, chemical plants, foundries and paper mills.

Straight-through air flow design results in maximum exhaust efficiency. During operation, high air flow velocity opens butterfly dampers and prevents rain or snow from entering. Dampers close and cover the venturi opening when unit is not in use.

Roof mounting permits locating the exhauster over a source of heated or contaminated air, allowing direct upward venting to the outside, unlike wall mounted exhausters which may move contaminated air through adjacent work spaces.

## CONSTRUCTION

### Panel Assembly

- Heavy-gauge G90 galvanized steel panel on all sizes.
- All welded support structure of schedule 40 galvanized pipe.
- Motor/bearing plates of minimum 10 gauge galvanized steel.

### Windband/Butterfly Dampers

- Heavy-gauge galvanized steel windband.
- Galvanized steel dampers standard.
- Galvanized rain channel drains water from damper area to roof.

### Propeller

- Three, four or six air-foil aluminum blades.
- Steel hub plate with steel taper lock bushing.

### Bearings

- Bearings designed for minimum 200,000 hour life.
- Bearings are sealed, pre-lubricated with relube fittings.

## Drives

- Sized for minimum 150% of drive horsepower.
- Single belt adjustable pitch sheaves through 3 HP.
- Two belt fixed pitch sheaves through 10 HP.

## Motors

- Open drip-proof construction is standard.



LISTED POWER ROOF VENTILATOR  
UL STANDARD 705

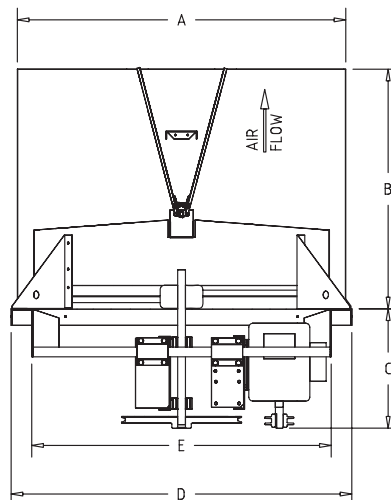
PROPELLER ROOF VENTILATORS

## DIMENSIONAL DATA

MODEL UBS	A	B	C	D	E	F	Average Ship Wt. Lbs.
24	30	26	20	32	28	31	
30	36	29	21	38	34	37	
36	42	31	21	44	40	43	
42	48	34	22	50	46	49	
48	54	37	26	56	52	55	
54	60	40	26	62	58	61	
60	66	43	26	68	64	67	

C=RECOMMENDED ROOF OPENING

MODEL UBS	RECOMMENDED 12" MOUNTING CURB	
	OD	STOCK NO.
24	3 1	2302.12.24UBB
30	3 7	2302.12.30UBB
36	4 3	2302.12.36UBB
42	4 9	2302.12.42UBB
48	5 5	2302.12.48UBB
54	6 1	2302.12.54UBB
60	6 7	2302.12.60UBB



ALL DIMENSIONS IN INCHES, WEIGHTS IN POUNDS. OD IS OUTSIDE DIMENSION OF SQUARE CURB AND DAMPER. DUE TO CONTINUING RESEARCH, SOLER & PALAU RESERVES THE RIGHT TO CHANGE SPECIFICATIONS WITHOUT NOTICE.

<b>MODEL UBS</b>						<b>Upblast Belt Drive Propeller Roof Exhauster</b>					Ventilator with Open Drip-proof Motor and Drive Assembly	
MODEL UBB	MOTOR Hp	MAX BHP	RPM	SONES @ 1/4 SP	NO. OF BLADES	CFM at Static Pressure					115/208/230/1/60*	208-230/460/3/60
						0	1/8	1/4	3/8	1/2	STOCK NO.	STOCK NO.
24	3/4	0.82	1070	22	3	7079	6599	6023	5284	3723	UBB24RH3S	UBB24RH3S
	1	1.10	1200	26	3	7939	7511	7068	6461	5718	UBB24SH3S	UBB24SH3S
30	1	1.10	755	17.6	3	10546	9463	7865	5230	3906	UBB30SH3S	UBB30SH3S
	1 1/2	1.65	915	25	3	12781	11952	10895	9435	7270	UBB30TH3S	UBB30TH3S
	2	2.20	1030	31	3	14388	13700	12782	11745	10346	UBB30VH3S	UBB30VH3S
36	1	1.15	575	15.1	3	11872	10354	8064	5301	3522	UBB36SH3S	UBB36SH3S
	1 1/2	1.65	705	22	3	14557	13389	11962	9903	6871	UBB36TH3S	UBB36TH3S
	2	2.20	795	26	3	16514	15416	14200	12722	10776	UBB36VH3S	UBB36VH3S
	3	3.30	950	37	3	19087	18221	17299	16291	15181	N/A	UBB42WH3S
42	1 1/2	1.65	510	16.8	3	16307	14087	11400	7270	5386	UBB42TH3S	UBB42TH3S
	2	2.20	600	23	3	19184	17283	15281	12804	8980	UBB42VH3S	UBB42VH3S
	3	3.30	700	37	3	22382	20749	19150	17245	15170	N/A	UBB42WH3S
	5	5.50	790	48	3	25259	23813	22382	20885	19127	N/A	UBB42XH3S
48	2	2.20	475	20	3	22656	20052	16506	10504	7559	UBB48VH3S	UBB48VH3S
	3	3.30	570	27	3	27187	25018	25563	19410	14113	N/A	UBB48WH3S
	5	5.50	660	38	3	31480	29606	27732	25319	22538	N/A	UBB48XH3S
54	3	3.30	400	20	3	29460	25454	20962	14718	11910	N/A	UBB54WH3S
	5	5.50	495	32	3	39456	33013	30586	26237	19623	N/A	UBB54XH3S
60	5	5.50	415	29	3	44555	40707	36545	27962	22834	N/A	UBB60XH3S
	7 1/2	8.62	475	38	3	50996	47635	44150	39164	31620	N/A	UBB60YH3S

**PROPELLER ROOF VENTILATORS**

Power ratings (BHP) do not include transmission losses.

Performance certified is for installation type A-free inlet, free outlet. Performance ratings include the effects of appurtenances (accessories).

The sound ratings shown are loudness values in fan sones @ 5' (1.5m) in a hemispherical free field calculated per AMCA Standard 301.

Values shown are for installation Type A-Free inlet fan sone levels.

**\*Tri-voltage (115-208-230) is standard on 3/4 through 1 1/2 Hp Single phase motors. Tri-voltage is available for the 1/2 Hp motors. Inquire for price and delivery.**  
575/3/60 ODP Motors are available for most motor HP's - Refer to Price List.

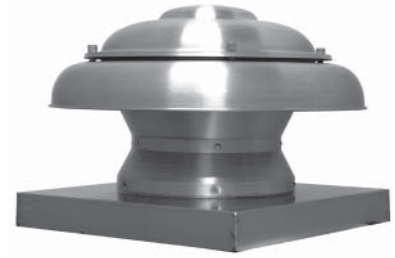


# MODEL ARE/ARS

## DOME DIRECT DRIVE PROPELLER

### EXHAUST/INTAKE ROOF VENTILATOR

ARE=Exhaust  
ARS=Supply



#### APPLICATION

The AR series offers powerful axial intake (ARS) or exhaust (ARE) performance in a roof mount design that is compact, lightweight and easy to install.

The AR series is an excellent choice for factories, shops, restaurants, bathrooms, offices, schools and other similar applications where light to moderate static pressures are present.

The low contour designs and all aluminum housing provides a modern, clean appearance in addition to excellent performance and durability. The direct drive design has no belts or fan bearings to maintain or adjust and consequently requires very little maintenance.

#### CONSTRUCTION

##### Housing

- Heavy gauge all aluminum housing.
- Exclusive U-Spring suspension compensates for both radial and lateral movement and provides 44% better vibration isolation than rubber isolators.
- External wiring chase for easy connection.
- Quick access to motor compartment for easy maintenance.

##### Propeller

- Attaches directly to motor shaft for maximum efficiency.
- Precision pitched, heavy gauge aluminum blades with steel hub. Blades are designed for specific exhaust or supply requirements.

##### Speed Controllable Motor

- Standard motors are single speed, speed controllable and drip-proof.
- All motors are rated for continuous duty.
- Disconnect is standard on ODP motors.
- Motors are shipped assembled with factory test run assurance.

#### DIMENSIONAL DATA

MODEL ARE/ARS	A	B	C	D	E	F	Average Ship Wt. Lbs.
10	21	13	7	2	20	12 3/4	25
12	28	16	8	3	24	15 3/4	42
16	32	18	8 1/2	3	28	19 3/4	55
20	36	20	9 3/4	3	32	23 3/4	75

#### ACCESSORIES

##### Solid State Speed Control:

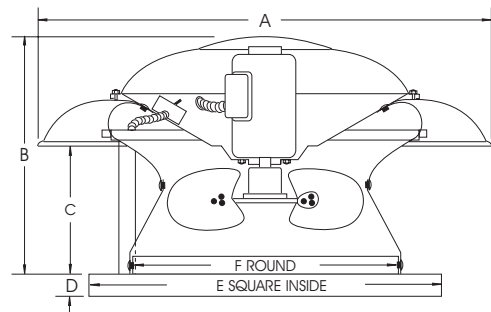
Is matched to the motor and blower wheel to allow continuous reduction in performance allowing adjustments of airflow for system balancing. CFM is reduced in direct proportion to motor speed reduction. Speed control is only available for 115 volt single phase. Exhauster performance can be controlled from the ventilated area.

#### PERFORMANCE ASSURANCE

- Units are tested in accordance with AMCA 301 (Sound) and AMCA 210 (Air).



LISTED POWER ROOF VENTILATOR  
UL STANDARD 705



MODEL ARE/ARS	RECOMMENDED 12" MOUNTING CURB		RECOMMENDED DAMPER		115 VOLT SPEED CONTROL
	OD	STOCK NO.	OD	STOCK NO. ARE / ARS	5 AMP STOCK NO.
10	18 1/2	91812221	14	411014 / S3GA12CB	2727.1
12	22 1/2	92212221	18	411018 / S3GA18CB	2727.1
16	26 1/2	92612221	22	411022 / S3GA22CB	2727.1
20	30 1/2	93012221	26	411026 / S3GA26CB	2727.1

ARE=Exhaust ARS=Supply

**SPEED CONTROL 2727.1 MAX 1/3 HP-5 AMP 120V**  
**2828.1 MAX 1/2 HP-10 AMP 120V**

ALL DIMENSIONS IN INCHES, WEIGHTS IN POUNDS. OD IS OUTSIDE DIMENSION OF SQUARE CURB AND DAMPER. DUE TO CONTINUING RESEARCH, SOLER & PALAU RESERVES THE RIGHT TO CHANGE SPECIFICATIONS WITHOUT NOTICE.

<b>MODEL ARE</b>					<b>Dome Direct Drive Propeller Exhaust Roof Ventilator</b>								Ventilator with Open Drip-proof Motor	
MODEL ARE	MOTOR Hp	MAX BHp	RPM	SONES @ 0 SP	CFM at Static Pressure								115/1/60	208-230/1/60
					0	1/10	1/8	1/4	3/8	1/2	5/8	3/4	STOCK NO.	STOCK NO.
10	1 1/5	0.067	1230+	-	495	322	268	-	-	-	-	-	ARE10IH1AS	N/A
			1390+	-	655	532	498	316	-	-	-	-		
			1550*	4.2	825	730	570	405	-	-	-	-		
12	1/4	0.125	820+	-	793	417	365	-	-	-	-	-	ARE12MM1AS	ARE12MM1CS
			940+	-	1088	914	818	478	375	-	-	-		
			1140*	4.1	1320	1224	1190	730	570	320	-	-		
	1/4	0.250	1030+	-	1173	1035	975	600	-	-	-	-	ARE12MH1AS	ARE12MH1CS
			1375+	-	1566	1450	1430	1163	866	-	-	-		
			1725*	6.1	2000	1857	1840	1760	1570	1160	1060	970		
16	1/4	0.167	685+	-	1226	796	700	-	-	-	-	-	ARE16MM1AS	ARE16MM1CS
			940+	-	1682	1378	1297	926	-	-	-	-		
			1140*	4.5	2040	1796	1730	1400	1110	930	-	-		
	1/3	0.333	1030+	-	1827	1572	1549	1114	-	-	-	-	ARE16PH1AS	ARE16PH1CS
			1375+	-	2439	2187	2149	2045	1704	-	-	-		
			1725*	9.5	3060	2863	2810	2650	2580	2410	2020	1800		
20	1/4	0.25	685+	-	1911	1442	1318	-	-	-	-	-	ARE20MM1AS	ARE20MM1CS
			940+	-	2622	2343	2256	1776	-	-	-	-		
			1140*	6.9	3180	2963	2900	2530	2140	1980	-	-		

\* AS RUN SPEED

+ PERFORMANCE USING SPEED CONTROL\*

<b>MODEL ARS</b>					<b>Dome Direct Drive Propeller Exhaust Roof Ventilator</b>								Ventilator with Open Drip-proof Motor	
MODEL ARS	MOTOR Hp	MAX BHp	RPM	SONES @ 0 SP	CFM at Static Pressure								115/1/60	208-230/1/60
					0	1/10	1/8	1/4	3/8	1/2	5/8	3/4	STOCK NO.	STOCK NO.
10	1/15	0.067	930+	-	615	423	351	-	-	-	-	-	ARS10IH1AS	N/A
			1230+	-	694	576	547	231	-	-	-	-		
			1550*	4.0	775	644	610	325	-	-	-	-		
12	1/4	0.125	685+	-	769	512	-	-	-	-	-	-	ARS12MM1AS	ARS12MM1CS
			940+	-	882	588	509	-	-	-	-	-		
			1140*	4.1	1070	833	770	440	-	-	-	-		
	1/4	0.250	1030+	-	943	697	588	-	-	-	-	-	ARS12MH1AS	ARS12MH1CS
			1375+	-	1259	1082	1040	706	429	-	-	-		
			1725*	6.1	1580	1433	1400	1230	920	700	470	-		
16	1/4	0.167	685+	-	1309	781	-	-	-	-	-	-	ARS16MM1AS	ARS16MM1CS
			940+	-	1501	895	842	394	-	-	-	-		
			1140*	4.5	1820	1360	1130	920	450	-	-	-		
	1/3	0.333	1030+	-	1505	1171	1069	691	-	-	-	-	ARS16PH1AS	ARS16PH1CS
			1375+	-	2009	1815	1742	1355	1028	-	-	-		
			1725*	9.5	2520	2383	2340	2040	1735	1500	1070	-		
20	1/4	0.25	685+	-	1767	1343	1223	-	-	-	-	-	ARS20MM1AS	ARS20MM1CS
			940+	-	2424	2123	2047	1626	-	-	-	-		
			1140*	6.9	2940	2692	2630	2310	1950	1580	-	-		

\* AS RUN SPEED

+ PERFORMANCE USING SPEED CONTROL

Soler & Palau certifies the performance shown herein. The ratings shown are based on tests and procedures performed in accordance with AMCA Publication 211 (Air) and AMCA 311 (Sound).

Use 5 AMP Speed Control for motors 1/3 HP and smaller.

Use 10 AMP Speed Control for motors 1/2.

PROPELLER ROOF VENTILATORS