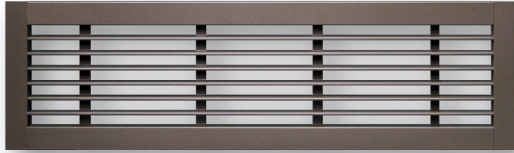
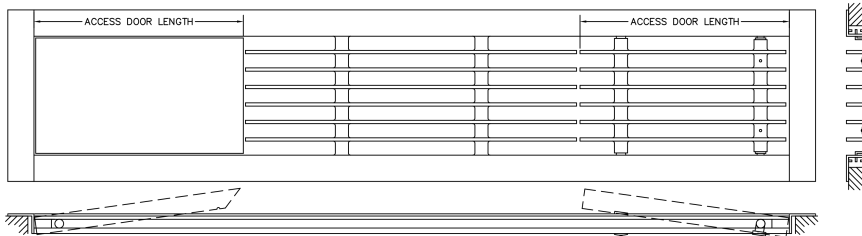
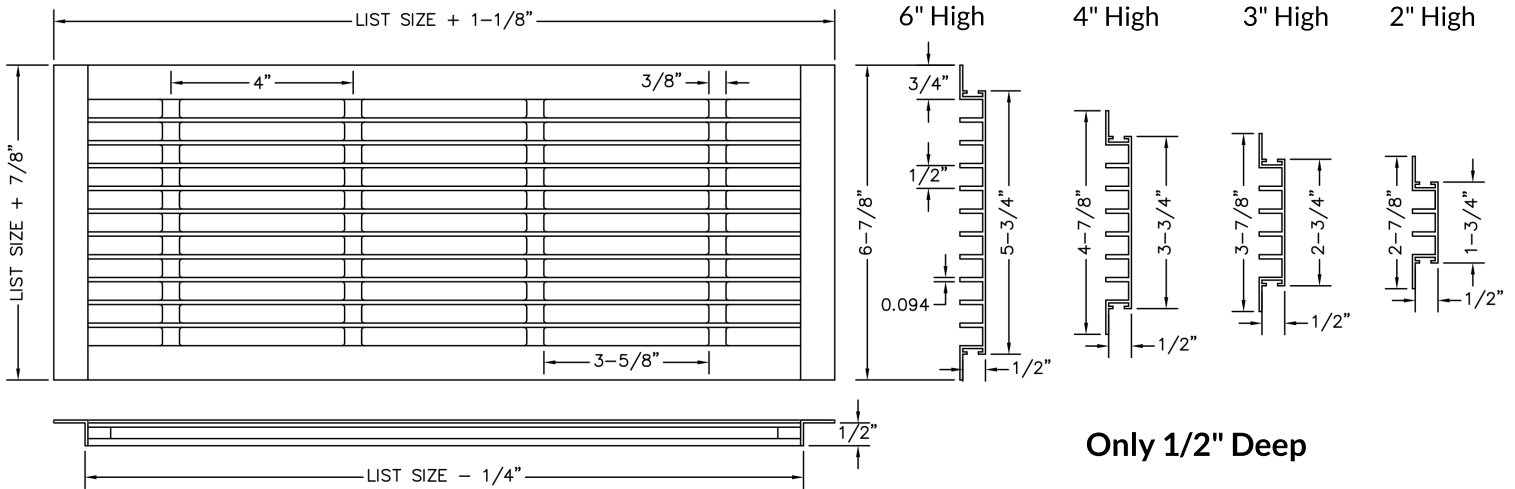


DABLS | Shallow Bar Linear Grille



- Fully extruded, high quality aluminum construction for a stylish appearance.
- Fixed blades parallel to the long dimension.
- Sections over 84" are joined for continuous lengths with aligning pins provided.
- Available on 1/2" increments as standard. Custom sizes available down to 1/16" increments.
- Available with durable powder coat finish.



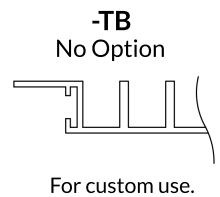
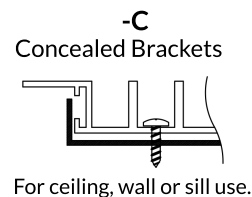
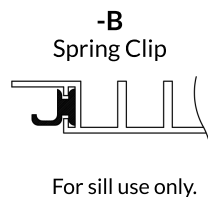
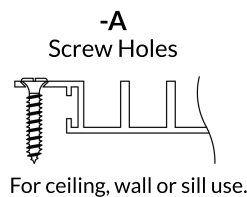
Additional Options

- ACS - Bar Type Access Door
- SMAC - Sheet Metal Access Door

Access door length: _____

1. Select a Mounting Option

- A - Screw Holes
- B - Spring Clips
- C - Concealed Brackets
- TB - No Mounting



2. Specify the Length Dimension

Inches MM _____

3. Select a Height Dimension

- 2" 4"
- 3" 6"



4. Select a Finish

- W White FB - Flat Black
- S Silver Special: _____
- B Brown
- M - Mill

5. Select a Lead Time

- 3 Day Ship
- Next Friday
- Standard Delivery

Project / Location: _____

Architect: _____

Engineer: _____

Contractor: _____

