

AX-EC SERIES

Shutter mounted fans with EC motor designed for industrial, commercial & farming applications.



May not be exactly as shown

The AX-EC series exhaust fan is a sturdily constructed, direct drive, horizontal discharge fan that is typically used for general ventilation of factories, garages, warehouses and other industrial or commercial buildings.

Models are equipped with variable speed, high efficiency EC motors.

The AX-EC series housings are constructed of heavy duty aluminum with built in shutters that automatically open when the fan starts and gravity closes when the fan stops.

Up to 70% energy savings with EC Motors.

FEATURES

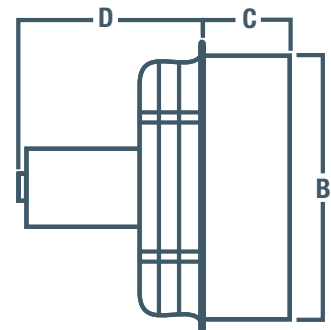
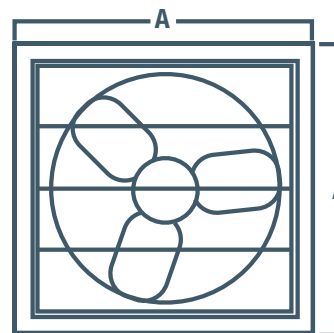
- Sturdily constructed from all-aluminum extrusions.
- 8" - 20" models have heavy wire chrome plated OSHA guards on intake side of fan.
- Variable speed, high efficiency EC Motor.
- Ships fully assembled.
- Fans up to 24" can be shipped via UPS.

SPECIFICATIONS

MODEL	SPEED	BLADE DIAMETER	RPM	HP	VOLTAGE	AMPS (FLA)	WEIGHT (LBS)	dB(A) @5 ft	CFM @ STATIC PRESSURE				FRAMING DIMENSIONS
									0.00"	0.10"	0.125"	0.25"	
AX08-ECV	Variable	8"	1800	1/4	115/208-280	2.8/1.7-1.3	12	48	360	270	230	0	12" X 12"
AX10-ECV	Variable	10"	1800	1/4	115/208-280	2.8/1.7-1.3	13	56	690	590	570	0	12" X 12"
AX12-EC	Variable	12"	1800	1/4	115/208-280	2.8/1.7-1.3	32	60	1650	1540	1510	1390	14" X 14"
AX14-EC	Variable	14"	1800	1/4	115/208-280	2.8/1.7-1.3	34	65	2180	2080	2060	1890	16" X 16"
AX16-EC	Variable	16"	1800	1/4	115/208-280	2.8/1.7-1.3	36	63	2370	2270	2210	2063	18" X 18"
AX18-EC	Variable	18"	1800	1/2	115/208-280	5.3/3.3-2.6	37	73	3200	3090	3040	2920	20" X 20"
AX20-EC	Variable	20"	1800	1/2	115/208-280	5.3/3.3-2.6	45	77	3440	3240	3180	2930	22" X 22"
AX24-EC	Variable	24"	1200	1/2	115/208-280	5.7/3.5-2.8	56	70	5500	5400	5310	5100	26" X 26"
AX30-EC	Variable	30"	1000	3/4	115/208-280	9.5/5.2-4.2	72	82	8000	7000	6000	5000	33" X 33"
AX36-EC	Variable	36"	1000	3/4	115/208-280	9.5/5.2-4.2	88	84	10000	8500	8000	6200	39" X 39"

DIMENSIONS

MODEL	A	B	C	D
AX08-EC	14 3/4"	11 3/4"	5"	11"
AX10-EC	14 3/4"	11 3/4"	5"	11"
AX12-EC	16 3/4"	13 3/4"	5"	11"
AX14-EC	18 3/4"	15 3/4"	5"	11"
AX16-EC	20 3/4"	17 3/4"	5"	11"
AX18-EC	22 3/4"	19 3/4"	5"	12"
AX20-EC	24 3/4"	21 3/4"	5"	12"
AX24-EC	28 3/4"	25 3/4"	5"	12"
AX30-EC	35 1/4"	32 3/4"	5"	13"
AX36-EC	41 1/4"	38 3/4"	5"	11"



ACCESSORIES

- 0V to 10V controls
- Thermostats
- Front guard
- Weather hoods

For a complete listing on all available accessories, see Accessories for AX & P Series page.

For a complete listing of all available hoods, see Hoods page.

For all available control options, see Controls & Thermostats section.

ACCESSORIES FOR AX & P SERIES FANS

FRONT GUARD FOR AX & P SERIES

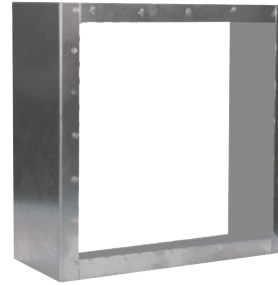
- 18 gauge galvanized 3/4" expanded metal screen, 6" deep.



FITS FAN	MODEL	WEIGHT (LBS)
8"	XFG8-10	6
10"	XFG8-10	6
12"	XFG12	6
14"	XFG14	8
16"	XFG16	9
18"	XFG18	10
20"	XFG20	10
24"	XFG24	13
30"	XFG30	TBA
36"	XFG36	TBA

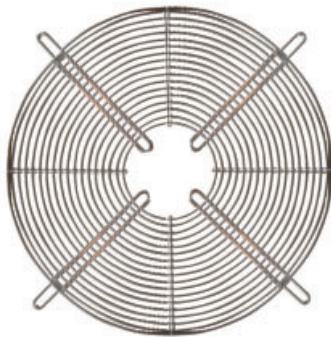
PANEL SLEEVES FOR P SERIES

- Sleeves are 9 1/2" deep.



FITS FAN	MODEL	WEIGHT (LBS)
8"	PSL08	14
10"	PSL10	14
12"	PSL12	14
14"	PSL14	14
16"	PSL16	14
18"	PSL18	15
20"	PSL20	19
24"	PSL24	23
30"	PSL30	26
36"	PSL36	30

REPLACEMENT GUARDS



FITS FAN	MODEL	DESCRIPTION	WEIGHT (LBS)
8"	R-2X115	8" - 10" OSHA motor mount	3
10"	R-2X115	8" - 10" OSHA motor mount	3
12"	R-2X116	12" OSHA motor mount	3
14"	R-2X117	14" - 16" OSHA motor mount	4
16"	R-2X117	14" - 16" OSHA motor mount	4
18"	R-2X118	18" - 20" OSHA motor mount	5
20"	R-2X118	18" - 20" OSHA motor mount	5
24"	R-2X119	24" OSHA motor mount	7
30"	R-2X113	30" OSHA motor mount	8
36"	R-2X114	36" OSHA motor mount	9

MOTORIZED & GRAVITY DAMPERS FOR FRESH AIR INTAKE



MOTORIZED DAMPER

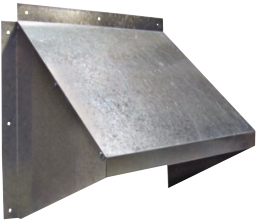
FITS FAN	MODEL #	
	MOTORIZED DAMPERS	BACK DRAFT DAMPERS
8"	SX3210X10	SR3210X10
10"	SX3210X10	SR3210X10
12"	SX3212X12	SR3212X12
14"	SX3214X14	SR3214X14
16"	SX3216X16	SR3216X16
18"	SX3218X18	SR3218X18
20"	SX3220X20	SR3220X20
24"	SX3224X24	SR3224X24
30"	SX3230X30	SR3230X30
36"	SX3236X36	SR3236X36

The Motorized dampers listed above are 110/230V.
For 24V AC, replace X with Z.



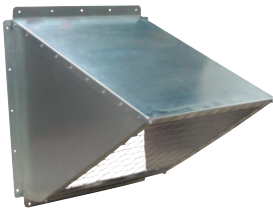
BACK DRAFT DAMPER

HOODS



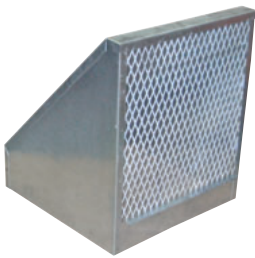
GH GALVANIZED HOODS

- Economical shipping.
- Easy to assemble, galvanized hood.
- No screens.



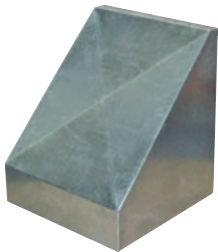
GH KNOCK DOWN HOODS

- Easy to assemble, galvanized hood.
- Includes bird screen.



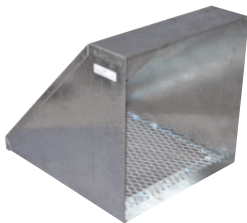
WHA HOODS

- For AX fans.
- Shipped fully assembled.
- 18 gauge galvanized weather hoods complete with bird screen.
- Optional insect screen available. Consult factory.



WHP HOODS

- For Panel fans.
- 18 gauge galvanized weather hoods complete with bird screen.
- Optional insect screen available. Consult factory.



INTAKE & EXHAUST HOODS

- Shipped fully assembled.
- 18 gauge galvanized weather hoods complete with bird screen.



PLASTIC HOODS

- Rugged, grey plastic hood.
- No screens.

HOOD MODEL	DIMENSIONS		APPROX. WEIGHT (LBS)	FANS THAT WILL FIT
	INSIDE DIMENSIONS	OUTSIDE DIMENSIONS		
GH GALVANIZED HOODS				
GH-XF12-M	14.75"W X 14.0"H	18"W X 15.75"H	4	XF12 / XB12 / SD8 / SD10 / AX8 / AX10 / AX12
GH-XF16-M	18.75"W 17.75"H	22"W X 19.75"H	7	XF16 / XB12 / HV12 / HVA12 / ADD12 / DDP12 / DDS12 / SD12-14 / AX14-16
GH-XF20-M	22.75"W X 22"H	26"W X 23.75"H	9	XF20 / XB14 / XB16 / HV14-16 / HVA14-16 / ADD14-16 / DDP14-16 / DDS14-16 / SD16-18 / AX18-20
GH-XF24-M	26.75"W 26"H	29"W X 27.25"H	12	XFS24
GH KNOCKDOWN HOODS				
GH-KD24	31.65"W X 31.66"H	34.65"W X 34.69"H	31	XB24 / HV24 / HVA24 / ADD24 / DDP24 / DDS24 / SD24 / AX24
GH-KD36	43.62"W X 43.93"H	46.62"W X 46.82"H	75	XB30-36 / HV30-36 / HVA30-36 / ADD30-36 / DDS30-36 / SD30-36 / AX30-36 / AX42
GH-KD48	55.62"W X 55.25"H	58.62"W X 58.82"H	TBA	XB42-48 / HV42-48 / HVA42-48 / ADD42-48 / DDS42-48 / SD42 / AX42
GH-KD60	69.76"W X 69.92"H	72.76"W X 72.95"H	TBA	XB54-60 / HV54-60 / HVA54-60 / ADD54-60
WHA HOODS				
WHA8-10	12.11"W X 12.11"H	-	13	AX08-10, SD8
WHA12	14.05"W X 14.05"H	-	16	AX12, SD10
WHA14	16.11"W X 16.11"H	-	22	AX14, SD12
WHA16	18.11"W X 18.11"H	-	26	AX16, SD14
WHA18	20.11"W X 20.11"H	-	29	AX18, SD16
WHA20	22.05"W X 22.05"H	-	31	AX20, SD18
WHA24	26.05"W X 26.05"H	-	47	AX24
WHA30	33.05"W X 33.05"H	-	59	AX30
WHA36	39.11"W X 39.11"H	-	76	AX36
WHP HOODS				
WH8-10P	14.45"W x 14.45"H	-	20	P08 / P10
WH12P	17.40"W X 17.40"H	-	16	P12
WH14P	19.20"W X 19.20"H	-	24	P14
WH16P	21.20"W X 21.20"H	-	26	P16
WH18P	23.20"W X 23.20"H	-	29	P18
WH20P	25.20"W X 25.20"H	-	44	P20
WH24P	29.15"W X 29.15"H	-	44	P24
WH30P	35.65"W X 35.65"H	-	60	P30
WH36P	41.65"W X 41.65"H	-	77	P36
EXHAUST / INTAKE / WEATHER HOODS				
EH12	16.55"W X 16.55"H	-	9	XF12 / SD8-12 / AX8-14 / XB12 / HV12 / HVA12 / ADD12 / DDP12 / DDS12
EH14	18.60"W X 18.60"H	-	15	XB14 / HV14 / HVA14 / ADD14 / DDP14 / DDS14 / SD14 / XF16 / AX16
EH16	20.60"W X 20.60"H	-	20	AX18 / SD16 / XB16 / HV16 / HVA16 / ADD16 / DDP16 / DDS16
EH18	22.55"W X 22.55"H	-	31	SD18 / XB18 / HV18 / HVA18 / ADD18 / DDP18 / DDS18 / XF20 / AX20
EH20	24.55"W X 24.55"H	-	44	SD20 / XB20 / XF24 / HV20 / HVA20 / ADD20 / DDP20 / DDS20
EH24	30.05"W X 30.05"H	-	60	SD24 / AX24 / XB24 / ADD24 / HV24 / HVA24 / DDP24 / DDS24
EH30	36.35"W X 36.35"H	-	72	SD30 / AX30 / XB30 / HV30 / HVA30 / ADD30 / DDS30 / JFHVA24
EH36	42.30"W X 42.30"H	-	104	SD36 / AX36 / XB36 / HV36 / HVA36 / ADD36 / DDS36 / JFHVA30
EH42	48.63"W X 48.63"H	-	163	XB42 / HV42 / HVA42 / ADD42 / DDS42 / JFHVA36 / SD42 / AX42
EH48	54.64"W X 54.64"H	-	TBA	XB48 / HV48 / HVA48 / ADD48 / DDS48 / JFHVA42
EH54	61.20"W X 61.20"H	-	TBA	XB54 / HV54 / HVA54 / ADD54 / JFHVA48
EH60	69.39"W X 69.39"H	-	TBA	XB60 / HV60 / HVA60 / ADD60
PLASTIC HOODS				
HFP-18G	21.50"W X 21.75"H	-	9	S8 / S10 / S12 / S14 / S16 / S18V / AX08 / AX10 / AX12 / AX14 / AX16 / AX18
HFP-24G	27.50"W X 27.75"H	-	13	S20 / S24 AX20 / AX24