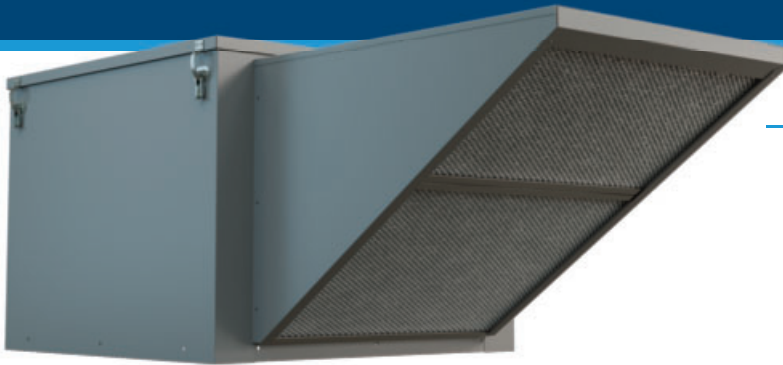


# GREEN SERIES SISDD-EC

## Side Intake Filtered Fresh Air Supply Units



### FEATURES

- High efficiency direct drive motor for energy efficient low maintenance applications.
- Side intake provides a means to meet supply and exhaust air separation in restaurant applications.
- Easy on-site addition of customer supplied air supply duct extension provides additional separation where necessary.
- Filters designed with large surface area for efficient filtration.
- Grey weather resistant baked powder coat finish.
- EC Motor offers true variable speed operation and up to 70% energy savings over PSC motors.

### PERFORMANCE SPECIFICATIONS

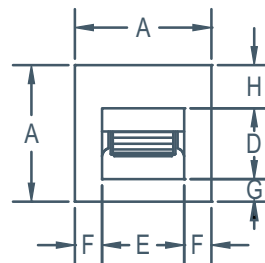
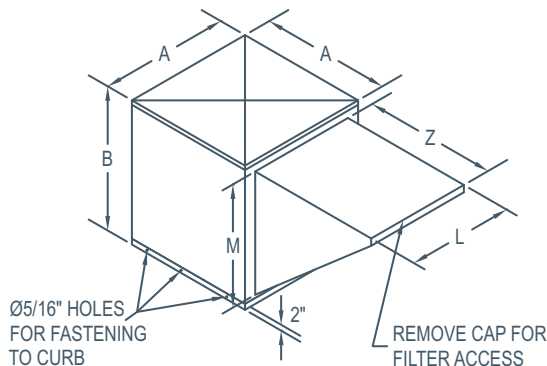
MODEL	MOTOR			AIRFLOW (CFM @ Static Pressure)															
	HP	Variable Speed	Max RPM	0"				1/2"				1"				1 1/4"			
				High	FEI	Low	FEI	High	FEI	Low	FEI	High	FEI	Low	FEI	High	FEI	Low	FEI
SIS9DD050EC	1/2	Y*	1200	1600	-	750	-	1450	-	600	-	1200	-	500	-	450	-	400	-
SIS9DD100EC	1	Y*	1200	2050	0.59	750	1.85	1950	0.75	600	1.5	1200	1.11	500	1.17	450	1.07	400	1.06
SIS10DD050EC	1/2	Y*	1100	1975	-	1100	-	1400	-	400	-	800	-	400	-	-	-	-	-
SIS10DD100EC	1	Y*	1100	2500	0.61	1100	1.57	2050	0.85	400	1.62	1400	1.11	400	1.28	750	1.23	300	1.09
SIS12DD050EC	1/2	Y*	1000	2600	-	1800	-	1925	-	400	-	850	-	400	-	600	-	300	-
SIS12DD100EC	1	Y*	1000	3300	0.58	1800	1.25	2800	0.8	400	1.37	2300	0.96	400	1.07	1650	1.07	300	0.92

\* Minimum motor speed 425 RPM (EC Models)

EC motors can be controlled using the built in potentiometer on motor or by using a 0 to 10 V controller, or by a remote potentiometer.

REVIEW FAN CURVES BEFORE ADJUSTING RPM TO ENSURE LOAD DOES NOT EXCEED MOTOR HP.

### DIMENSIONS



BOTTOM VIEW



MODEL	A	B	D	E	F	G	H	L	M	Z	FILTERS		*INSIDE CABINET	WEIGHT (lbs) without motors
											SIZE	QUANTITY		
SIS-9DD	24 3/8"	19 3/8"	10 1/4"	11 13/16"	6 9/32"	7 1/16"	7 1/16"	19 1/4"	16 9/16"	21 1/4"	16" x 24" x 1"	1	24"x 24"	70
SIS-10DD	28 3/8"	21 3/8"	11 3/8"	13 1/8"	7 5/8"	8 1/2"	8 1/2"	20 1/2"	18 9/16"	25 3/4"	15" x 20" x 1"	2	28"x 28"	87
SIS-12DD	32 3/8"	24 5/8"	13 7/16"	15 5/8"	8 3/8"	9 15/32"	9 15/32"	25 3/8"	21 9/16"	30 3/4"	20" x 25" x 1" & 16" x 25" x 1"	1 & 1	32"x 32"	117

\* Curb size to be smaller than inside cabinet to allow for flashing and roofing.

\*\* Includes filter section.