



1. PRODUCT SUMMARY

The Primex Wall Cap Series (WC) is ideal for exhaust and intake applications. This includes the through-wall exhaust of dryers, bathroom kitchen fans and stove vents, and the intake for furnaces and fresh air make-up.

This rainscreen-compatible series comes in sizes ranging from 3-8 inches and in multiple colours.

2. FEATURES & BENEFITS

- Compatible with rainscreen applications via extended base, compensating for cavity between sheathing and cladding.
 - Patented design eliminates leaky joints while maximizing water protection with one-piece molded base and built-in drip edge.
 - Integrity of the building envelope is maintained via a removable hood for simple cleaning or replacement.
 - Suitable for intake and exhaust applications.
 - Over-sized flange ensures watertight installation.
 - Made with UV-protected durable polymer resin.
 - Highly resistant to mechanical impact including a built-in bird screen.
 - Quick and easy installation.
- * For dryer applications we recommend the no screen 'NS' model.

3. COLOURS

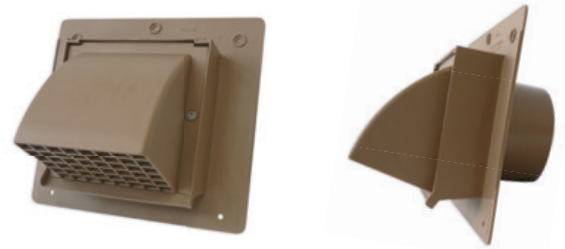
- | | |
|-------------------|-------------------|
| ▪ Snow White (01) | ▪ Light Grey (31) |
| ▪ Taupe (23) | ▪ Tan (45) |
| ▪ Black (25) | ▪ Dark Brown (68) |
| ▪ Dark Grey (28) | |



WC31068 - Brown Range Hood



WC631 - Light Grey



WC4 - Brown



FOR MORE INFORMATION CONTACT:

20160 92A Avenue Langley BC V1M 3A4 Canada
📞 1.877.881.7875 📧 info@primexfits.com primexfits.com



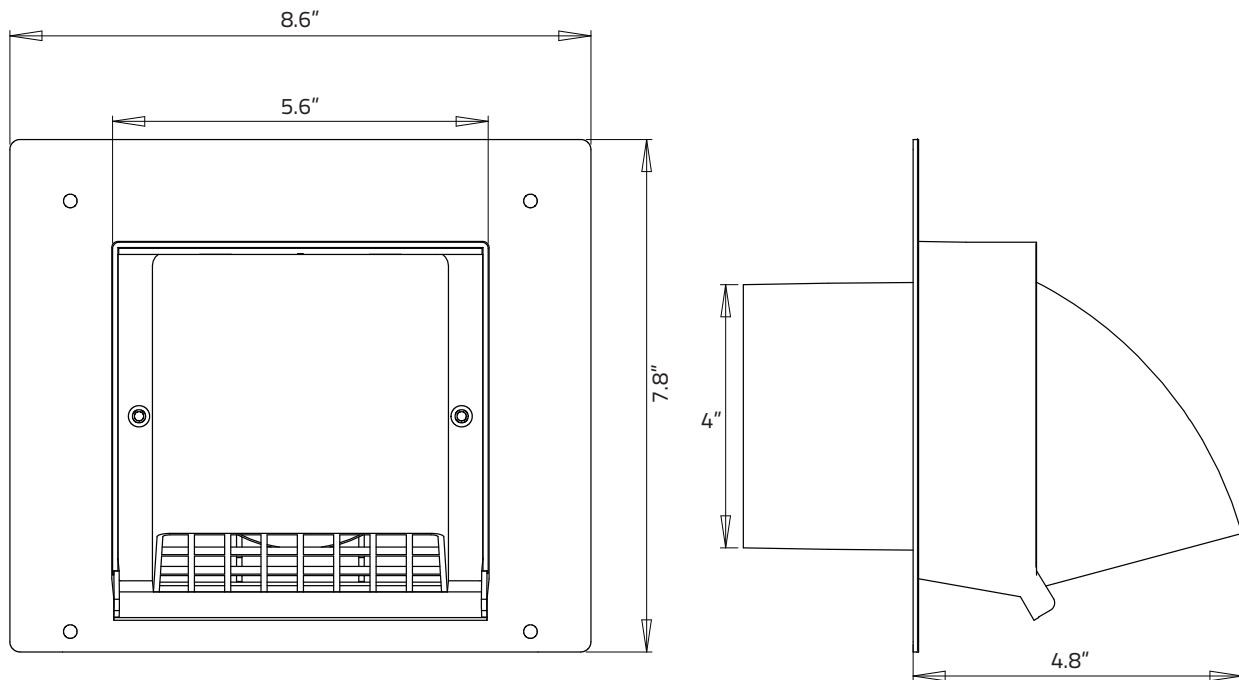
4. SIZING/PART NUMBER

INTAKE AND EXHAUST WALL CAP VENTS					
W/BIRD SCREEN	W/O BIRD SCREEN	COLLAR SIZE	FREE AREA	DESCRIPTION	PKG
WC3	WC3NS	3"	7.7 sq. in.	For use with 3" dia. ducting	25/box
WC4	WC4NS	4"	9.5 sq. in.	For use with 4" dia. ducting	25/box
WC5	WC5NS	5"	19.6 sq. in.	For use with 5" dia. ducting	10/box
WC6	WC6NS	6"	28.3 sq. in.	For use with 6" dia. ducting	10/box
WC7	WC7NS	7"	38.5 sq. in.	For use with 7" dia. ducting	2/box
WC8	WC8NS	8"	46.8 sq. in.	For use with 8" dia. ducting	2/box

RANGE HOOD VENTS				
PART #	DUCT BOOT	FREE AREA	DESCRIPTION	PKG
WC310	3" x 10"	30.2 sq. in.	Wall Cap Vent: use with 3" x 10" register boot or slab duct	18/pkg
WC310K	3.25" x 10"	30.2 sq. in.	Range Hood Vent: use with 3.25" x 10" kitchen transition boot or slab duct	18/pkg

5. TECHNICAL DRAWINGS

(WC4 Shown)



FOR MORE INFORMATION CONTACT:

20160 92A Avenue Langley BC V1M 3A4 Canada
 1.877.881.7875 info@primexfits.com primexfits.com