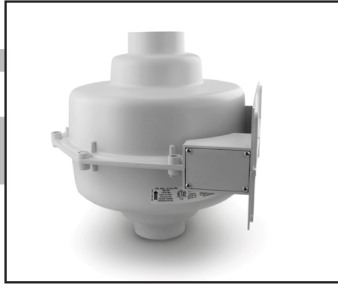




The World's Leading
Radon Fan Manufacturer



GP/XP/XR Series Installation & Operating Instructions

Please Read And Save These Instructions

DO NOT CONNECT POWER SUPPLY UNTIL FAN IS COMPLETELY INSTALLED. MAKE SURE ELECTRICAL SERVICE TO FAN IS LOCKED IN "OFF" POSITION. DISCONNECT POWER BEFORE SERVICING FAN.

1. **WARNING!** For General Ventilating Use Only. Do Not Use to Exhaust Hazardous, Corrosive or Explosive Materials, Gases or Vapors. See Vapor Intrusion Application Note #AN001 for important information on VI applications.
RadonAway.com/vapor-intrusion
2. **NOTE:** Fan is suitable for use with solid state speed controls however use of speed controls is not generally recommended.
3. **WARNING!** Check voltage at the fan to insure it corresponds with nameplate.
4. **WARNING!** Normal operation of this device may affect the combustion airflow needed for safe operation of fuel burning equipment. Check for possible backdraft conditions on all combustion devices after installation.
5. **NOTICE!** There are no user serviceable parts located inside the fan unit.
Do NOT attempt to open. Return unit to the factory for service.
6. **WARNING!** Do not leave fan unit installed on system piping without electrical power for more than 48 hours. Fan failure could result from this non-operational storage.
7. **WARNING - TO REDUCE THE RISK OF FIRE, ELECTRIC SHOCK, OR INJURY TO PERSONS, OBSERVE THE FOLLOWING:**
 - a) Use this unit only in the manner intended by the manufacturer. If you have questions, contact the manufacturer.
 - b) Before servicing or cleaning unit, switch power off at service panel and lock the service disconnecting means to prevent power from being switched on accidentally. When the service disconnecting means cannot be locked, securely fasten a prominent warning device, such as a tag, to the service panel.
 - c) Installation work and electrical wiring must be done by qualified person(s) in accordance with all applicable codes and standards, including fire rated construction.
 - d) Sufficient air is needed for proper combustion and exhausting of gases through the flue (chimney) of fuel burning equipment to prevent back drafting. Follow the heating equipment manufacturers guideline and safety standards such as those published by the National Fire Protection Association, and the American Society for Heating, Refrigeration and Air Conditioning Engineers (ASHRAE), and the local code authorities.
 - e) When cutting or drilling into a wall or ceiling, do not damage electrical wiring and other hidden utilities.
 - f) Ducted fans must always be vented to outdoors.
 - g) If this unit is to be installed over a tub or shower, it must be marked as appropriate for the application and be connected to a GFCI (Ground Fault Circuit Interrupter) - protected branch circuit.

RadonAway

3 Saber Way | Ward Hill, MA 01835

www.radonaway.com



XP/XR Series

XP151 p/n 23010-1
XP201 p/n 23011-1
XR261 p/n 23019-1

GP Series

GP201 p/n 23007-1
GP301 p/n 23006-1
GP401 p/n 23009-1
GP501 p/n 23005-1

1.0 SYSTEM DESIGN CONSIDERATIONS

1.1 INTRODUCTION

The GP/XP/XR Series Radon Fans are intended for use by trained, professional certified/licensed" after professional Radon mitigators. The purpose of this instruction is to provide additional guidance for the most effective use of a fan. This instruction should be considered as a supplement to EPA / radon industry standard practices, state and local building codes and state regulations. In the event of a conflict, those codes, practices and regulations take precedence over this instruction.

1.2 ENVIRONMENTALS

The GP/XP/XR Series Fans are designed to perform year-round in all but the harshest climates without additional concern for temperature or weather. For installations in an area of severe cold weather, please contact RadonAway for assistance. When not in operation, the fan should be stored in an area where the temperature is never less than 32° F. or more than 100° F.

1.3 ACOUSTICS

The GP/XP/XR Series Fan, when installed properly, operates with little or no noticeable noise to the building occupants. The velocity of the outgoing air should be considered in the overall system design. In some cases the "rushing" sound of the outlet air may be disturbing. In these instances, the use of a RadonAway Exhaust Muffler is recommended.

1.4 GROUND WATER

In the event that a temporary high water table results in water at or above slab level, water may be drawn into the riser pipes thus blocking air flow to the GP/XP/XR Series Fan. The lack of cooling air may result in the fan cycling on and off as the internal temperature rises above the thermal cutoff and falls upon shutoff. Should this condition arise, it is recommended that the fan be turned off until the water recedes allowing for return to normal operation.

1.5 SLAB COVERAGE

The GP/XP/XR Series Fan can provide coverage up to 2000+ sq. ft. per slab penetration. This will primarily depend on the sub-slab material in any particular installation. In general, the tighter the material, the smaller the area covered per penetration. Appropriate selection of the GP/XP/XR Series Fan best suited for the sub-slab material can improve the slab coverage. The GP & XP Series have a wide range of models to choose from to cover a wide range of subslab material. The higher static suction fans are generally used for tighter subslab materials. The XR Series is specifically designed for high flow applications such as stone/gravel and drain tile. Additional suction points can be added as required. It is recommended that a small pit (5 to 10 gallons in size) be created below the slab at each suction hole.

1.6 CONDENSATION & DRAINAGE

Condensation is formed in the piping of a mitigation system when the air in the piping is chilled below its dew point. This can occur at points where the system piping goes through unheated space such as an attic, garage or outside. The system design must provide a means for water to drain back to a slab hole to remove the condensation. The GP/XP/XR Series Fan **MUST** be mounted vertically plumb and level, with the outlet pointing up for proper drainage through the fan. Avoid mounting the fan in any orientation that will allow water to accumulate inside the fan housing. The GP/XP/XR Series Fans are **NOT** suitable for underground burial.

For GP/XP/XR Series Fan piping, the following table provides the minimum recommended pipe diameter and pitch under several system conditions.

Pipe Dia.	Minimum Rise per Foot of Run*		
	@25 CFM	@50 CFM	@100 CFM
4"	1/8"	1/4"	3/8"
3"	1/4"	3/8"	1 1/2"



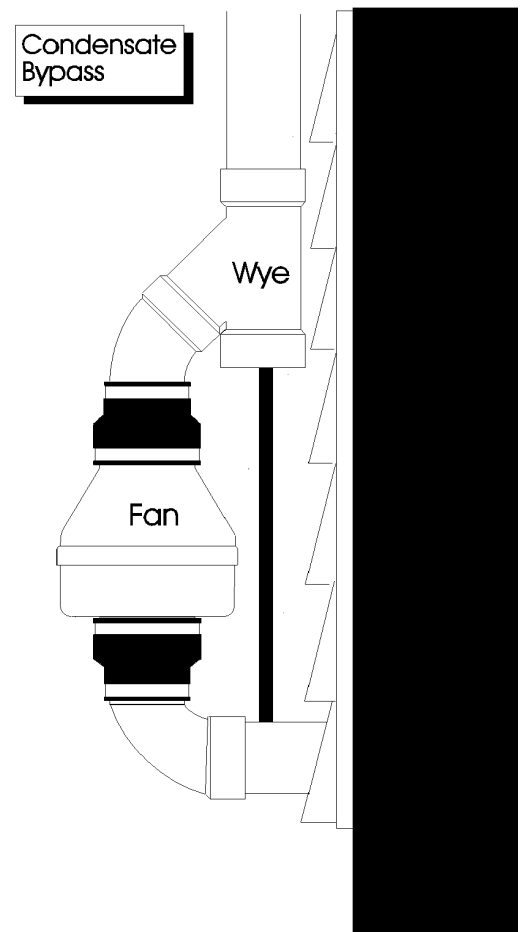
*Typical GP/XP/XR Series Fan operational flow rate is 25 - 90 CFM.
(For more precision, determine flow rate by using the chart in the addendum.)

Under some circumstances in an outdoor installation a condensate bypass should be installed in the outlet ducting as shown. This may be particularly true in cold climate installations which require long lengths of outlet ducting or where the outlet ducting is likely to produce large amounts of condensation because of high soil moisture or outlet duct material. Schedule 20 piping and other thin-walled plastic ducting and Aluminum downspout will normally produce much more condensation than Schedule 40 piping.

The bypass is constructed with a 45 degree Wye fitting at the bottom of the outlet stack. The bottom of the Wye is capped and fitted with a tube that connects to the inlet piping or other drain. The condensation produced in the outlet stack is collected in the Wye fitting and drained through the bypass tube. The bypass tubing may be insulated to prevent freezing.

1.7 SYSTEM MONITOR & LABEL

A System Monitor, such as a manometer (P/N 50017) or audible alarm (P/N 28001-2) is required to notify the occupants of a fan system malfunction. A System Label (provided with manometer P/N 50017) with instructions for contacting the installing contractor for service and also identifying the necessity for regular radon tests to be conducted by the building occupants, must be conspicuously placed where the occupants frequent and can see the label.



1.8 ELECTRICAL WIRING

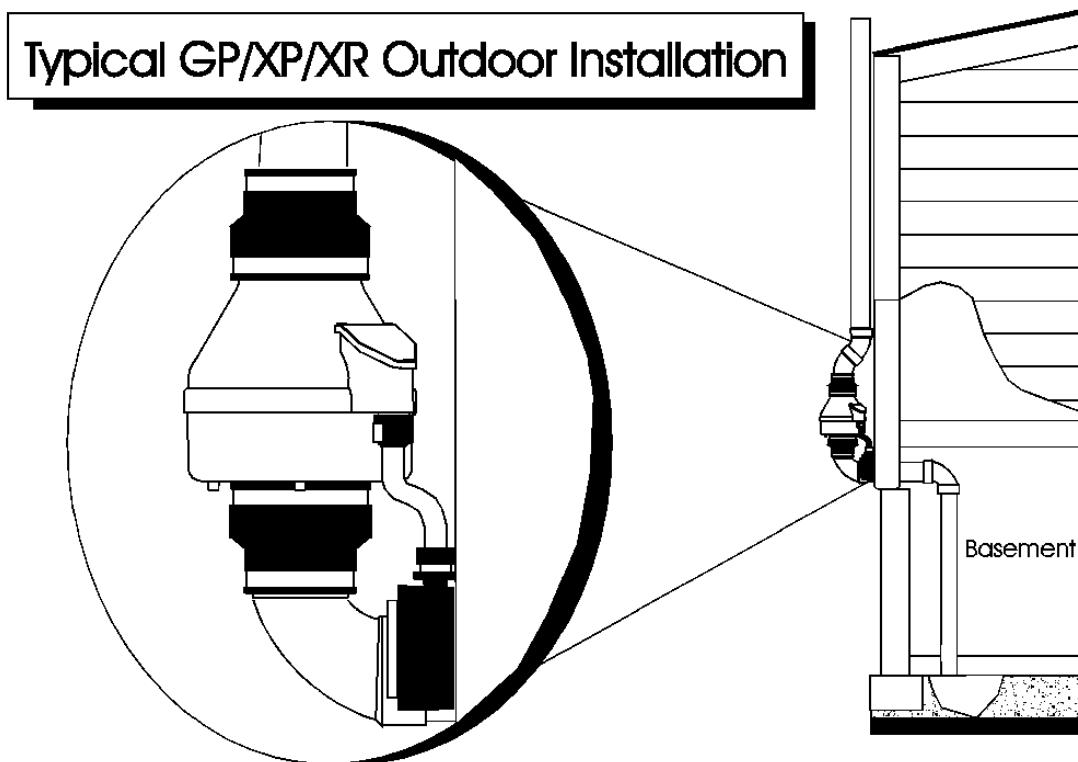
The GP/XP/XR Series Fans operate on standard 120V 60 Hz. AC. All wiring must be performed in accordance with the National Fire Protection Association's (NFPA) "National Electrical Code, Standard #70"-current edition for all commercial and industrial work, and state and local building codes. All wiring must be performed by a qualified and licensed electrician. Outdoor installations require the use of a U.L. listed watertight conduit. Ensure that all exterior electrical boxes are outdoor rated and properly sealed to prevent water penetration into the box. A means, such as a weep hole, is recommended to drain the box.

1.9 SPEED CONTROLS

The GP/XP/XR Series Fans are rated for use with electronic speed controls however, they are generally not recommended. If used, the speed control recommended is Pass & Seymour Solid State Speed Control Cat. No. 94601-I.

2.0 INSTALLATION

The GP/XP/XR Series Fan can be mounted indoors or outdoors. (It is suggested that EPA recommendations be followed in choosing the fan location.) The GP/XP/XR Series Fan may be mounted directly on the system piping or fastened to a supporting structure by means of optional mounting bracket.



2.1 MOUNTING

Mount the GP/XP/XR Series Fan vertically with outlet up. Insure the unit is plumb and level. When mounting directly on the system piping assure that the fan does not contact any building surface to avoid vibration noise.

2.2 MOUNTING BRACKET (optional)

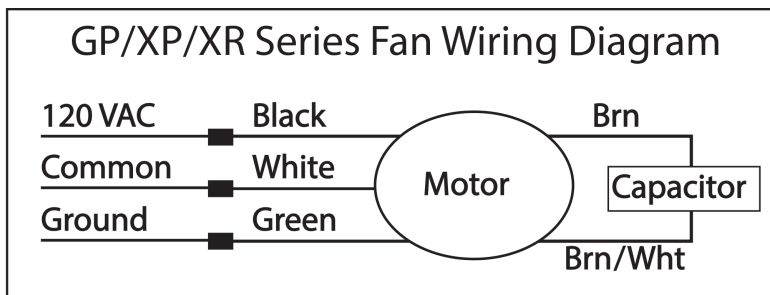
The GP/XP/XR Series Fan may be optionally secured with the integral mounting bracket on the GP Series Fan or with RadonAway P/N 25007 mounting bracket for an XP/XR Series Fan. Foam or rubber grommets may also be used between the bracket and mounting surface for vibration isolation.

2.3 SYSTEM PIPING

Complete piping run, using flexible couplings as means of disconnect for servicing the unit and vibration isolation.

2.4 ELECTRICAL CONNECTION

Connect wiring with wire nuts provided, observing proper connections (See Section 1.8):



2.5 VENT MUFLER (optional)

Install the muffler assembly in the selected location in the outlet ducting. Solvent weld all connections. The muffler is normally installed at the end of the vent pipe.

2.6 OPERATION CHECKS & ANNUAL SYSTEM MAINTENANCE

____ **Verify** all connections are tight and **leak-free**.

____ **Insure** the GP/XP/XR Series Fan and all ducting is secure and vibration-free.

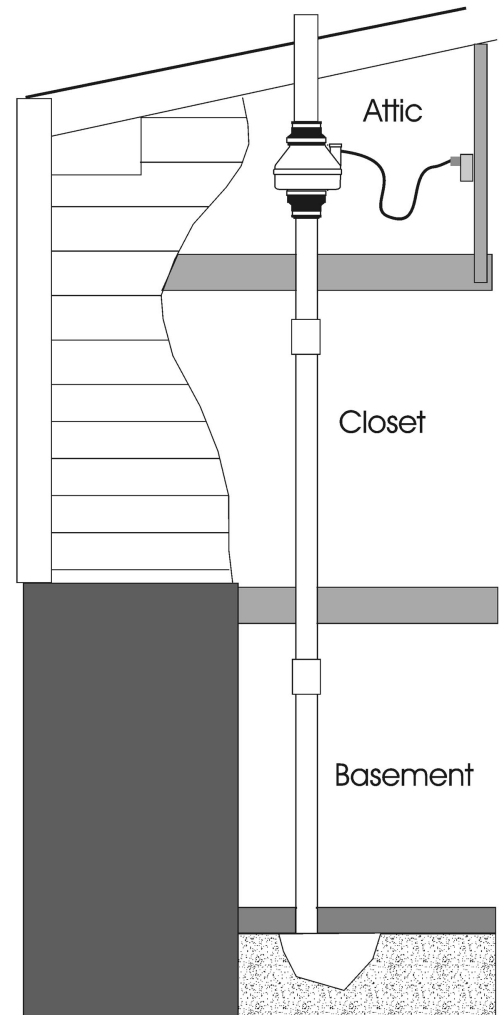
____ **Verify** system vacuum pressure with manometer. **Insure** vacuum pressure is within normal operating range and **less than** the maximum recommended operating pressure.

(Based on sea-level operation, at higher altitudes reduce by about 4% per 1000 Feet.)

(Further reduce Maximum Operating Pressure by 10% for High Temperature environments)

See Product Specifications. If this is exceeded, increase the number of suction points.

____ **Verify Radon levels by testing to EPA protocol.**



XP/XR SERIES PRODUCT SPECIFICATIONS

The following chart shows fan performance for the XP & XR Series Fan:

	Typical CFM Vs Static Suction "WC								
	0"	.25"	.5"	.75"	1.0"	1.25"	1.5"	1.75"	2.0"
XP151	180	162	140	117	78	46	10	-	-
XP201	150	130	110	93	74	57	38	20	-
XR261	250	215	185	150	115	80	50	20	-

Maximum Recommended Operating Pressure*		
XP151	1.3" W.C.	(Sea Level Operation)**
XP201	1.7" W.C.	(Sea Level Operation)**
XR261	1.6" W.C.	(Sea Level Operation)**

*Reduce by 10% for High Temperature Operation

**Reduce by 4% per 1000 feet of altitude

Power Consumption @ 120 VAC	
XP151	45 - 60 watts
XP201	45 - 66 watts
XR261	65 - 105 watts

XP Series Inlet/Outlet: 4.5" OD (4.0" PVC Sched 40 size compatible)

XR Series Inlet/Outlet: 5.875" OD

Mounting: Mount on the duct pipe or with optional mounting bracket.

Recommended ducting: 3" or 4" Schedule 20/40 PVC Pipe

Storage temperature range: 32 - 100 degrees F.

Normal operating temperature range: -20 - 120 degrees F.

Maximum inlet air temperature: 80 degrees F.

Size: 9.5H" x 8.5" Dia.

Weight: 6 lbs. (XR261 - 7 lbs)

Continuous Duty

Thermally Protected

Class B Insulation

3000 RPM

Residential Use Only

Rated for Indoor or Outdoor Use

LISTED
Electric Fan



Conforms to
UL STD. 507
Certified to
CAN/CSA STD.
C22.2 No.113

GP SERIES PRODUCT SPECIFICATIONS

The following chart shows fan performance for the GP Series Fan:

	Typical CFM Vs Static Suction "WC						
	1.0"	1.5"	2.0"	2.5"	3.0"	3.5"	4.0"
GP501	95	87	80	70	57	30	5
GP401	93	82	60	38	12	-	-
GP301	92	77	45	10	-	-	-
GP201	82	58	5	-	-	-	-

Maximum Recommended Operating Pressure*		
GP501	3.8" W.C.	(Sea Level Operation)**
GP401	3.0" W.C.	(Sea Level Operation)**
GP301	2.4" W.C.	(Sea Level Operation)**
GP201	1.8" W.C.	(Sea Level Operation)**

*Reduce by 10% for High Temperature Operation

**Reduce by 4% per 1000 feet of altitude

Power Consumption @ 120 VAC	
GP501	70 - 140 watts
GP401	60 - 110 watts
GP301	55 - 90 watts
GP201	40 - 60 watts

Inlet/Outlet: 3.5" OD (3.0" PVC Sched 40 size compatible)

Mounting: Fan may be mounted on the duct pipe or with integral flanges.

Weight: 12 lbs.

Size: 13H" x 12.5" x 12.5"

Recommended ducting: 3" or 4" Schedule 20/40 PVC Pipe

Storage temperature range: 32 - 100 degrees F.

Normal operating temperature range: -20 - 120 degrees F.

Maximum inlet air temperature: 80 degrees F.

Continuous Duty

Class B Insulation

3000 RPM

Thermally Protected

Rated for Indoor or Outdoor Use

LISTED
Electric Fan



Conforms to
UL STD. 507
Certified to
CAN/CSA STD.
C22.2 No.113

IMPORTANT INSTRUCTIONS TO INSTALLER

Inspect the GP/XP/XR/RP/SF Series Fan for shipping damage within 15 days of receipt. Notify **RadonAway® of any damages immediately**. RadonAway® is not responsible for damages incurred during shipping. However, for your benefit, RadonAway® does insure shipments.

There are no user serviceable parts inside the fan. **Do not attempt to open**. Return unit to factory for service.

Install the GP/XP/XR/RP/SF Series Fan in accordance with all EPA standard practices, and state and local building codes and state regulations.

Provide a copy of this instruction or comparable radon system and testing information to the building occupants after completing system installation.

WARRANTY

RadonAway® warrants that the GPX01/XP/XR/RP/SF Series Fan (the "Fan") will be free from defects in materials and workmanship for a period of 90 days from the date of purchase (the "Warranty Term").

RadonAway® will replace any Fan which fails due to defects in materials or workmanship during the Warranty Term. The Fan must be returned (at Owner's cost) to the RadonAway® factory. Any Fan returned to the factory will be discarded unless the Owner provides specific instructions along with the Fan when it is returned regardless of whether or not the Fan is actually replaced under this warranty. Proof of purchase must be supplied upon request for service under this Warranty.

This Warranty is contingent on installation of the Fan in accordance with the instructions provided. This Warranty does not apply where any repairs or alterations have been made or attempted by others, or if the unit has been abused or misused. Warranty does not cover damage in shipment unless the damage is due to the negligence of RadonAway®.

5 YEAR EXTENDED WARRANTY WITH PROFESSIONAL INSTALLATION.

RadonAway® will extend the Warranty Term of the fan to five (5) years from date of purchase or sixty-three (63) months from the date of manufacture, whichever is sooner, if the Fan is installed in a professionally designed and professionally installed active soil depressurization system or installed as a replacement fan in a professionally designed and professionally installed active soil depressurization system by a qualified installer. Proof of purchase and/or proof of professional installation may be required for service under this warranty. Outside the Continental United States and Canada the extended Warranty Term is limited to one (1) year from the date of manufacture.

RadonAway® is not responsible for installation, removal or delivery costs associated with this Warranty.

LIMITATION OF WARRANTY

EXCEPT AS STATED ABOVE, THE GPX01/XP/XR/RP SERIES FANS ARE PROVIDED WITHOUT WARRANTY OF ANY KIND, EITHER EXPRESS OR IMPLIED, INCLUDING, WITHOUT LIMITATION, IMPLIED WARRANTIES OF MERCHANTABILITY AND FITNESS FOR A PARTICULAR PURPOSE.

IN NO EVENT SHALL RADONAWAY BE LIABLE FOR ANY DIRECT, INDIRECT, SPECIAL, INCIDENTAL, OR CONSEQUENTIAL DAMAGES ARISING OUT OF, OR RELATING TO, THE FAN OR THE PERFORMANCE THEREOF. RADONAWAY'S AGGREGATE LIABILITY HEREUNDER SHALL NOT IN ANY EVENT EXCEED THE AMOUNT OF THE PURCHASE PRICE OF SAID PRODUCT. THE SOLE AND EXCLUSIVE REMEDY UNDER THIS WARRANTY SHALL BE THE REPAIR OR REPLACEMENT OF THE PRODUCT, TO THE EXTENT THE SAME DOES NOT MEET WITH RADONAWAY'S WARRANTY AS PROVIDED ABOVE.

For service under this Warranty, contact RadonAway for a Return Material Authorization (RMA) number and shipping information. No returns can be accepted without an RMA. If factory return is required, the customer assumes all shipping costs, including insurance, to and from factory.

*RadonAway® 3 Saber Way
Ward Hill, MA 01835 USA TEL (978) 521-3703
FAX (978) 521-3964
Email to: Returns@RadonAway.com*

Record the following information for your records:

Serial No. _____

Purchase Date. _____