



BEVELED BAR GRILLES
PRODUCT SPECIFICATIONS



BB-30

Beveled Bar Grille

201 632 3759
 www.vexell.com
 support@vexell.com

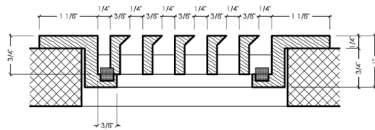


Standard Features

- + 15° DEFLECTION ANGLE
- + MAGNETIC REMOVABLE CORE
- + INSET OR FLUSH MOUNT FRAMES (F or I)
- + (7) WOOD SPECIES



BB-30 F Frame
 (stock sizes available)

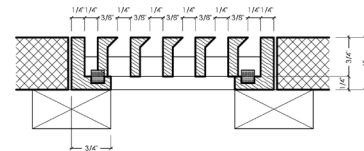


Available Options

- + CUSTOM SIZES
- + OVERSIZED SEGMENTED LENGTHS
- + CUSTOM STAIN OR PAINTED FINISHING
- + FIXED CORE

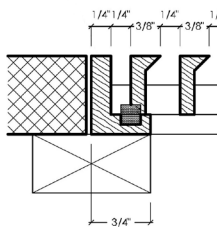


BB-30 I Frame
 (stock sizes available)

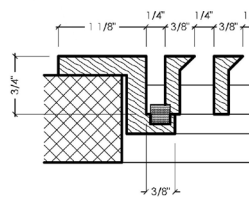


Available Frame Types

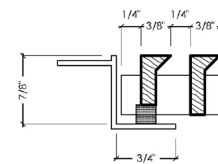
I frame



F frame



T frame



CUSTOM (MADE-TO-ORDER)

Stock Wood Species

UNFINISHED



red oak

cherry

mahogany



ash

walnut

poplar

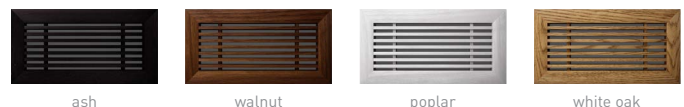
white oak



red oak

cherry

mahogany



ash

walnut

poplar

white oak

FINISHED

Measuring Guide

201 632 3759
www.vexell.com
support@vexell.com



THIS GUIDE WILL SHOW YOU HOW TO MEASURE AND SELECT THE RIGHT GRILLE SIZE.

Measurements should match the width and length of your opening's inside dimension. It is recommended to allow for clearance tolerances.

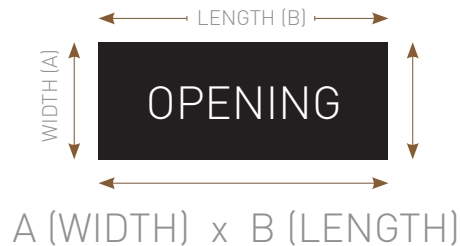
NOTE: GRILLES ARE MANUFACTURED TO THE SIZE GIVEN AND WILL NOT BE AUTOMATICALLY UNDERSIZED

STEP **1**

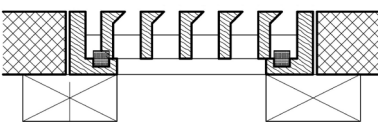
Measure the inside of your opening:
(A) = width (B) = length

STEP **2**

Determine clearance needed and subtract from width and length.

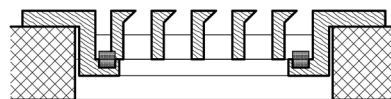


I FRAME - INSET APPLICATION



WOOD GRILLES WHICH ARE FLANGE-LESS SIT FLUSH IN THE OPENING. IT IS RECOMMENDED TO ALLOW 1/16 CLEARANCE IN YOUR FINAL MEASUREMENT TO ENSURE A PROPER FIT.

F FRAME - OVERLAY APPLICATION



WOOD GRILLES WITH A FLANGE WILL COVER SMALL GAPS AROUND THE OPENING. IT IS RECOMMENDED TO ALLOW 1/16 CLEARANCE IN YOUR FINAL MEASUREMENT TO ENSURE A PROPER FIT.

CORE ONLY - CUSTOM APPLICATION



CORE ONLY GRILLES ARE WOOD GRILLES WITH NO FRAME. IT IS RECOMMENDED TO ALLOW 1/16 CLEARANCE IN YOUR FINAL MEASUREMENT TO ENSURE A PROPER FIT.